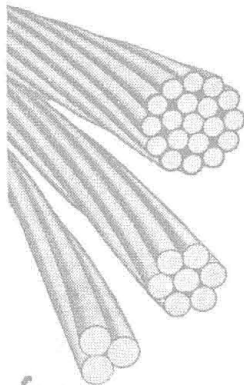




Stainless Steel
STRAND

PAGE

will make it again



for
**GROUND
GUY
MESSENGER
CATENARY**

Higher—

- Corrosion resistance
- Tensile strength
- Elastic limit
- Resistance to abrasion
- Strength-to-weight ratio

Lower—

- Cost per year during use

Present restrictions prohibit our furnishing PAGE Stainless Steel Strand today, but it will pay you to consider it for the future.



ACCO



PAGE STEEL AND WIRE DIVISION
AMERICAN CHAIN & CABLE

Monessen, Pa., Atlanta, Chicago, Denver, Detroit,
Los Angeles, New York, Philadelphia,
Portland, San Francisco, Bridgeport, Conn.

RAILROAD PERSONNEL

Stanley E. Noble, assistant chief engineer-communications and signals, Chicago & North Western, retired June 1. Mr. Noble was born on May 22, 1888, at West Pittston, Pa., graduating from the electrical engineering department of Pennsylvania State College in 1915. During the summer vacation preceding his graduation, he entered railway service as a helper in a signal con-

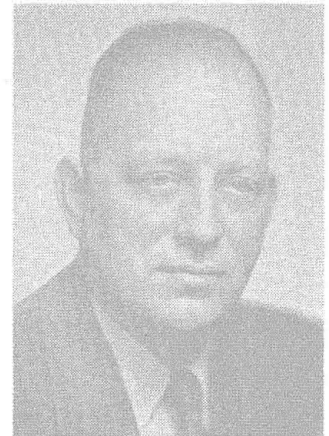


Stanley E. Noble

struction gang on the Delaware, Lackawanna & Western. Mr. Noble, after completing his college course, returned to the Lackawanna on June 15, 1915, as an electrician's helper at Scranton, Pa. In October, 1915, he was transferred to the signal department on the Scranton division as an assistant wireman, later becoming signal wireman, which position he held up to September, 1917, when he left the Lackawanna to enter the services of the Chicago & North Western as a signal draftsman in the office of the signal engineer at Chicago. During the year 1918, Mr. Noble spent several months in the Army, and, when World War I ended, was attending the Artillery Officers' Training School at Camp Taylor, Ky. He returned to his position as draftsman in December, 1918. Mr. Noble was appointed signal estimator in April, 1921, and, after serving in this capacity for one year, he was appointed chief draftsman. In July, 1924, Mr. Noble was promoted to assistant engineer in the signal department. He held this position until November, 1926, at which time he was appointed general signal inspector. On January 1, 1928, he was appointed assistant signal engineer, holding this position until October 20, 1937, when he was appointed signal engineer. On November 1, 1939, Mr. Noble was appointed superintendent of telegraph and signals, coincident with the combination of the telegraph and signal departments on the North Western. On June 1, 1942, he was appointed superintendent of telegraph and signals of the Chicago & North Western system, which includes the Chicago, St. Paul, Minneapolis & Omaha. On July 1, 1946, Mr. Noble was appointed assistant chief engineer-com-

munications and signals, which position he held until his retirement. Mr. Noble has been an active member of the Signal Section, A.A.R., working on several committees, and was chairman of the Section in 1945. He is also a member of the Communications Section, A.A.R.

Henry T. Fleisher, signal engineer, Chicago & North Western, with headquarters in Chicago, has been promoted to assistant chief engineer, communications and signals, succeeding Stanley E. Noble, who retired June 1, as noted elsewhere. Mr. Fleisher was born January 25, 1909, at Bellwood, Pa., and was graduated from Pennsylvania State College in 1930. He entered railway service on June 16, 1930, with the Pennsylvania as a signal apprentice serving in various capacities at Harrisburg, Pa., Philadelphia, Wilmington, Del., Trenton, N. J., and New York, also on the Long Island at Jamaica, N. Y. Mr. Fleisher was appointed inspector telegraph and signals on the Pennsylvania, at Tyrone, Pa., on February 1, 1940; assistant supervisor telegraph and signals, at Jersey City, on May 1, 1940; assistant supervisor telegraph and signals on the Long Island, at Jamaica, on June 15, 1940; assistant supervisor telegraph and signals, on special duty, in the chief engineer's office, Philadelphia, on December 15, 1940; and assistant supervisor telegraph and signals, at Philadelphia, on October 1,



Henry T. Fleisher

1941. He was appointed supervisor telegraph and signals, at Buffalo, N. Y., on May 1, 1942, and supervisor telegraph and signals, at Fort Wayne, Ind., on June 1, 1944, which position he held at the time of his appointment as signal engineer on the Chicago & North Western, in Chicago, in June, 1947.

K. Chamberlain, supervisor interlocking operations on the Chicago & North Western, has been appointed signal engineer with headquarters at Chicago, succeeding H. T. Fleisher, who has been appointed assistant chief engineer—Communications and signals.

D. O. Jones, equipment installer, St. Louis-San Francisco, with headquarters at Springfield, Mo., has been appointed to assistant electronics engineer, with head-