

Call-on signals and controls at an automatic interlocking involving a passing track. Call-on enables a train to go over the crossing and proceed toward siding for a meet

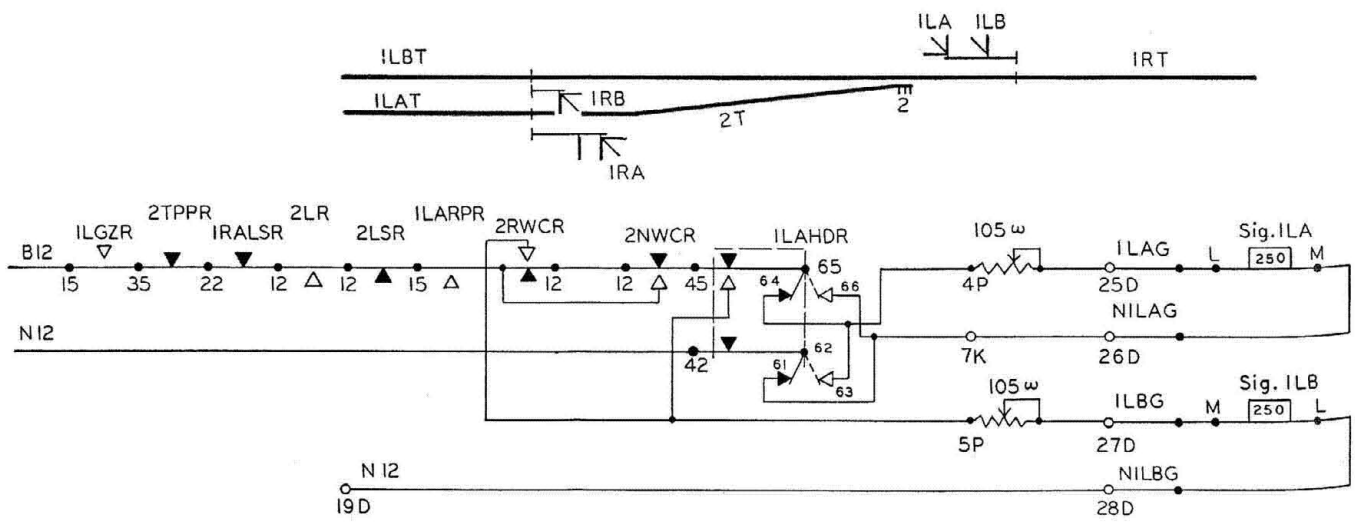
Call-On Signals

What control features can be incorporated to insure that a call-on signal will clear for only a specified route? Under what operating conditions should call-on signals be used?

Used on Soo Line
 By B. F. McGOWAN
 Superintendent of Signals
 Soo Line
 Minneapolis, Minn.

At remotely-controlled power switch locations the Soo Line uses a call-on signal for diverging routes and an automatic call-on on the main route when the power switch is properly lined and locked, and the so-called detector circuit clear. This permits a train to proceed on the main line at restricted speed, expecting to find the track beyond the so-called detector circuit occupied.

This is generally used at entrances to yards and terminals. Call-on signals are also used on this railroad at automatic interlocking plants where a passing track is involved. When a superior train occupies the main line, the opposing train will receive a call-on signal to enable such train to proceed to the siding switch for the train meet.



Call-on signals and controls at a remotely-controlled switch. This is generally used at entrances to yards and terminals.