

of railway signaling, and took a correspondence course in signaling with the Railway Educational Bureau. On August 4, 1913,



W. B. Neff

he entered railway service with the New York, Chicago & St. Louis, as signal helper on the Western division. He was promoted to signal maintainer on June 1, 1917, and to signalman in construction on May 18, 1929. On September 18, 1929, he was advanced to signal maintainer, and on August 24, 1935, was appointed signalman, assigned to special duties such as inspecting and testing. He was promoted to signal maintainer on October 13, 1936, and appointed temporary general signal foreman on March 15, 1940. On April 30, 1940, he was made signal maintenance foreman on the Chicago division. He was appointed temporary assistant signal supervisor in charge of C.T.C. installation on the Buffalo division on April 26, 1944, being made signal maintenance foreman on the Chicago division on February 19, 1945. Mr. Neff was appointed temporary assistant signal supervisor on March 11, 1945, which position he held at the time of his recent appointment.

Frank Youngwerth, assistant signal supervisor on the Erie, has been promoted to construction signal inspector, with headquarters at Youngstown, Ohio. Mr. Young-



Frank Youngwerth

werth was born on November 23, 1909, at Garfield, N.J., and was educated in the public grammar school and high school of his native city. Later he studied electrical engineering by correspondence. He entered

railway service with the Erie on May 27, 1929, as a helper. On February 16, 1933, he was promoted to assistant signal maintainer, in which position he served for four years. On August 30, 1937, he became signalman "Megger" tester and served in this capacity until November 1, 1941, when he was appointed foreman of maintainers, with headquarters at Marion, Ohio. Mr. Youngwerth was appointed assistant signal supervisor on February 16, 1943, which position he held at the time of his recent promotion.

William H. Claus, signal inspector on Illinois Central, has been promoted to assistant engineer, with headquarters at Chicago. Mr. Claus was born on April 24, 1895, at Chicago, graduating from Lane Tech High School, Chicago. He entered railway service on July 1, 1912, as signal



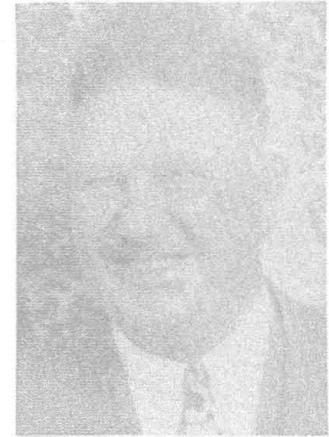
W. H. Claus

draftsman on the Illinois Central. From April, 1918 to January, 1919, he was in the Chemical Warfare Service of the U. S. Army. After he was discharged from the Army he returned to the Illinois Central as a signal draftsman until November, 1919, when he went with the Chicago, Rock Island & Pacific as a circuit designer. In May, 1920, he returned to the Illinois Central as a signal draftsman. Mr. Claus was appointed signal inspector in June, 1922, which position he held at the time of his recent promotion.

W. R. Baker has been promoted to principal assistant engineer-signals on the Atlantic Coast Line, E. D. Delaney has been promoted to assistant to signal engineer, S. J. Davis, Jr. has been promoted to supervisor of signal construction, and R. S. Hall has been promoted to office engineer, each man having his headquarters at Wilmington, N.C.

Ralph R. Louder, signal testman on the Illinois Central, has been promoted to supervisor of signals on the Iowa division, with headquarters at Waterloo, Iowa. Mr. Louder was born on January 23, 1894, at Edgewood, Ill. He attended the Edgewood Schools, and took a correspondence course in electrical engineering. On November 8, 1915, he entered railway service as a signal helper on the Illinois division of the Illinois Central, being transferred to the Louisiana division in 1916. He was promoted to signalman on the Iowa division in 1917, and was transferred to the Illinois division in 1918. In 1924, he was

appointed signal foreman on the Illinois division. Mr. Louder was advanced to signal testman on the Illinois division in



R. R. Louder

1940, which position he held at the time of his recent promotion. Mr. Louder served with the 74th Engineers U. S. Army in France in 1918.

Supply Trade

Richard H. Rowland, vice-president in charge of the National Battery Company's Gould Industrial division, Depew, N.Y., has assumed the added responsibility of general sales manager, succeeding John C. Sykora, resigned. Mr. Rowland, a Michigan graduate, was vice-president of the St. Paul Engineering & Manufacturing Company prior to his re-



R. H. Rowland

cent connection with the National Battery Company. In addition to his general administrative responsibilities, he will direct the operations of Gould's entire sales and service field organization.

Obituary

Charles B. Keers, assistant signal engineer on the Eastern Lines of the Atchison, Topeka & Santa Fe, with headquarters in Topeka, Kan., died on May 5, in
(Continued on page 469)