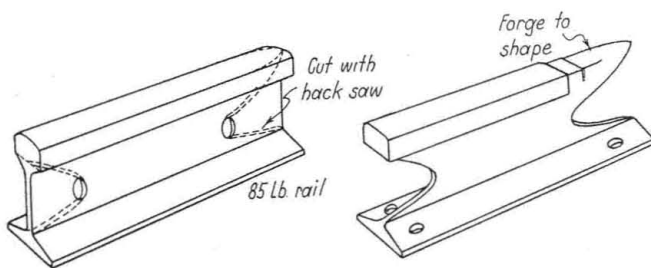


Small Bench Anvil Made from Scrap Rail

By C. A. Cox

Signal Maintainer, Chicago & Eastern Illinois, Vincennes, Ind.

A SMALL bench anvil for light shop repairs was made out of a scrap piece of 85-lb. rail about 12 in. long. The surplus metal was removed by sawing



A small bench anvil can be fashioned out of a scrap piece of old rail

with a hack saw and the point was forged to proper shape, using as a pattern a standard blacksmith anvil. Holes can be drilled into the base of the rail for fastening the anvil permanently to the bench.

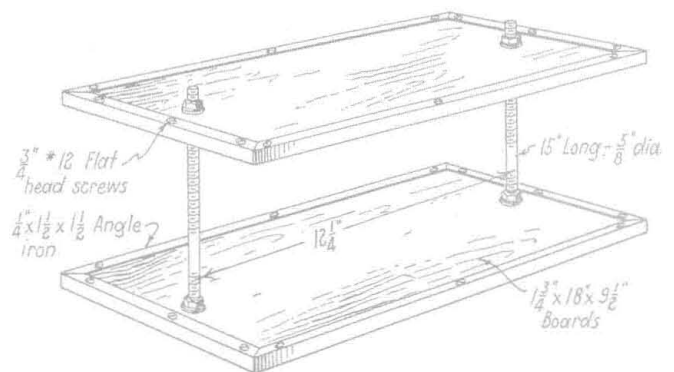
Straightening Press for Storage Battery Plates

By W. J. Scharff

Leading Signal Maintainer, New York Central, West Haverstraw, N. Y.

STORAGE battery plates that have become buckled can be straightened in the field by the use of the press illustrated. Frequently it is not possible to take a battery to headquarters and in such cases the press illustrated can be used in the field. Two wooden boards $1\frac{3}{4}$ in. thick, $9\frac{1}{2}$ in. wide and 18 in. long, were used for the top and bottom members of the press. To prevent warping and splitting the edges of the boards were chamfered and reinforced with angle iron $\frac{1}{4}$ in. thick and $1\frac{1}{2}$ in. wide. These were applied with $\frac{3}{4}$ -in. flat head wood screws. The $\frac{5}{8}$ -in. bolts were of a length suitable for the size and number of plates in the group to be straightened. Cross-arm spacing bolts will be found satisfactory for this press. In assembling the press, the bolts are held rigidly by the upper and lower nuts on the bottom board, the top member is then placed over the two bolts and the large square

cross-arm washers and nuts applied. Before placing a plate group into the press, boards must be inserted between the plates. For this purpose boards



Dimensional sketch of simple storage battery plate straightener

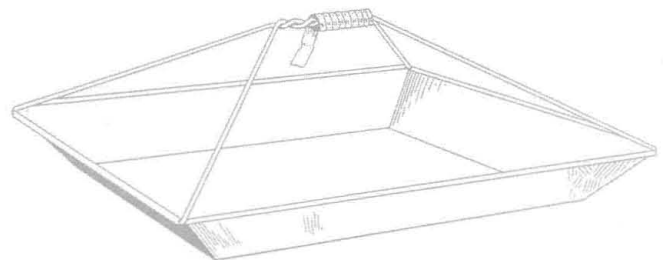
$1\frac{3}{4}$ in. thick, 10 in. wide and 12 in. long will be found satisfactory. After the plate group is inserted in the press the two nuts on the top board are tightened down simultaneously to exert a uniform pressure on the plate to be straightened.

A Carrier for Small Tools

By R. Scobee

Signal Maintainer, Northern Pacific, Prosser, Wash.

CHANNEL pins, chisels, punches and other small tools used by signalmen can be carried conveniently in the metal box illustrated herewith. The box part can be made from heavy galvanized sheet iron or a



Carrier for Small Tools Made from Galvanized Sheet Iron

box of this shape can probably be obtained without any trouble. The handle is made from two bond wires which are twisted in the middle and taped and fastened to the four corners of the box.