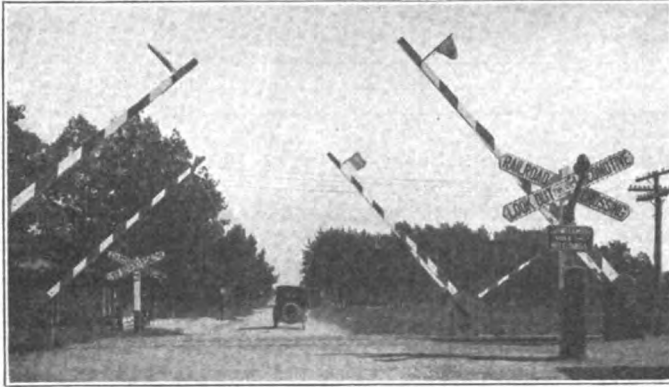


## New Devices

### FLASH LIGHTS ON THE P. & R.

The Philadelphia & Reading has recently installed at Richland, N. J., two flashing light highway crossing equipments as shown in one of the illustrations. A flashing white light illuminates the white sign and at the same time the beams of a flashing red light are projected



P. & R. Crossing at Richland, N. J., Protected by Flash Lights

out along the highway as a warning signal to traffic approaching the crossing. The light used is the A. G. A. acetylene flash light which can be adjusted to flash continuously or only on the approach of trains.

The close-up view of one of the equipments shows clearly how the arm was bolted to the existing sign post. This arm carries the lamp which stands out 29 in. from and a little above the center of the sign. The acetylene for the light is compressed into the 12 in. by 36 in. seamless steel tank of 225 cu. ft. capacity seen at the bottom



One of the Flash Light Crossing Signal Installations

of the sign. The pressure gage and regulator and the piping are placed in the heavy steel shelter along with the gas tank at the base of the post and can be locked up to prevent molestation. The lamp which contains the burner and the flashing apparatus is made of cast iron and is therefore not subject to the same deterioration in service as the pressed steel lamp. The total weight of the equipment is about 400 lb. The tank fully charged weighs 225 lb.

This equipment can be attached to and used with practically any existing crossing sign. It is supplied by the A. G. A. Railway Light & Signal Company, Elizabeth, N. J., and Peoples Gas Building, Chicago.

### "SMOKES" FOR RAILWAY REGIMENTS

**A** MOVEMENT has been started among railway supply men to raise a "Railway Regiments' Tobacco Fund." The purpose of this fund is to buy tobacco for the members of the railway regiments now in France.

The movement was initiated by F. A. Poor, president of the P. & M. Company, Chicago, who is chairman of the committee. It has the approval of S. M. Felton, president of the Chicago Great Western and director-general of railways for the United States Government. Mr. Felton estimated that twelve 20-pound packages of tobacco should be sufficient for the weekly supply of each regiment. On this basis it will cost \$1,080 a week. This amount is to be raised by monthly subscriptions of \$10 each from railway supply companies or individual supply men. Checks are made payable to John R. Washburn, treasurer, and should be mailed to Samuel O. Dunn, secretary, Railway Regiments' Tobacco Fund, 750 Transportation Bldg., Chicago.

### THE SIGNAL DEPARTMENT ROLL OF HONOR

**I**N addition to previous announcements, the following signalmen who have joined some branch of military service have been reported:

**CHESAPEAKE & OHIO.**—The following men from the Cincinnati division have joined the army: A. R. Young, maintainer; D. Ellis, signalman; J. E. Scott, wireman.

**CHICAGO, MILWAUKEE & ST. PAUL.**—The following men from the signal department of the lines west of Mobridge, S. D., have enlisted in various branches of the army and navy: Jack Castelloe, timekeeper, company B, Sixteenth Infantry, now in France; Glenn F. DeGraves, Francis M. Applegate and Eugene Bunnell, wiremen, Naval Electrical School, Mare Island, Cal.; Royal L. Richards, groundman, Railway Engineers' Regiment; Walter R. Jobe, groundman, Second Washington Infantry; Ivan Livingston, groundman, first officers' training camp, Presidio; Vaughn P. Thorpe, groundman, National Army; William B. Graham, groundman, Fourteenth Infantry; Earl W. Crantford, groundman, Aviation Section, Signal Corps; Verne I. Powells, groundman, Marine Corps; Howard Ashbridge, groundman, U. S. Navy.

**CHICAGO, ROCK ISLAND & PACIFIC.**—C. E. St. John, clerk in the Moline signal repair shop, in charge of stock receiving and shipping, has been called into government service and is now located at Camp Dodge, Iowa, in the fifth company, 338th machine gun battalion. Mr. St. John has been in the Rock Island signal department since March, 1910, holding the positions successively of laborer on construction, maintainer's helper, maintainer, construction man on Chicago terminal block signal work, maintainer, and repair shop clerk.

**INTERSTATE COMMERCE COMMISSION.**—H. D. W. Riley, junior railroad signal engineer, division of valuation, has been commissioned a captain in the Engineer Officers' Reserve Corp and ordered to the training camp at American University, D. C.

**NASHVILLE, CHATTANOOGA & ST. LOUIS.**—J. A. Bradshaw, assistant signal maintainer, has enlisted in the Twenty-sixth U. S. Engineers.