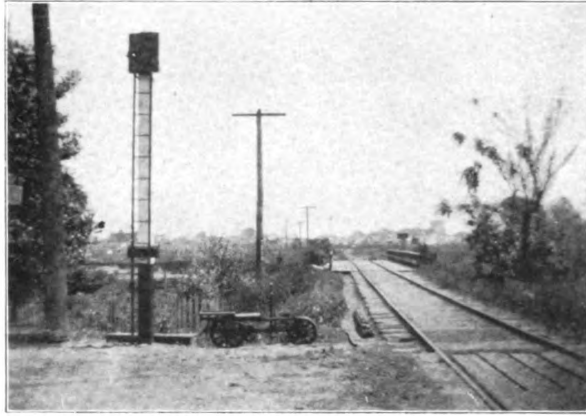


**CROSSING BELL EQUIPPED WITH LADDER.**

TO THE EDITOR OF THE SIGNAL ENGINEER:

I was very much pleased to read the article in the August issue of *The Signal Engineer*, describing the recent installation on the Chicago, Rock Island & Pacific of a highway



Bell with Ladder, at West-Davenport, Iowa.

crossing bell pole equipped with a ladder. I think every maintainer will appreciate the equipping of his bell poles

The above photograph is of a bell pole equipped with a ladder that I had installed at West-Davenport, Iowa, on the Chicago, Rock Island & Pacific over four years ago.

E. J. RELPH, Signal Inspector, Northern Pacific.  
St. Paul, Minn., September 1, 1910.

**KEEPING THE LAMPS CLEAN.**

TO THE EDITOR OF THE SIGNAL ENGINEER:

As I am employed here as tower man and am interested in the labor and time-saving kinks that signal men have devised I am submitting a little kink of my own which I have found very useful and which will, I hope, prove valuable to other tower men in helping them to keep their lamps clean and bright on the inside. I make a rather thick paste of pulverized ashes and common black, or engine, oil, and with a small piece of waste dipped in this paste scour the inside of each lamp.

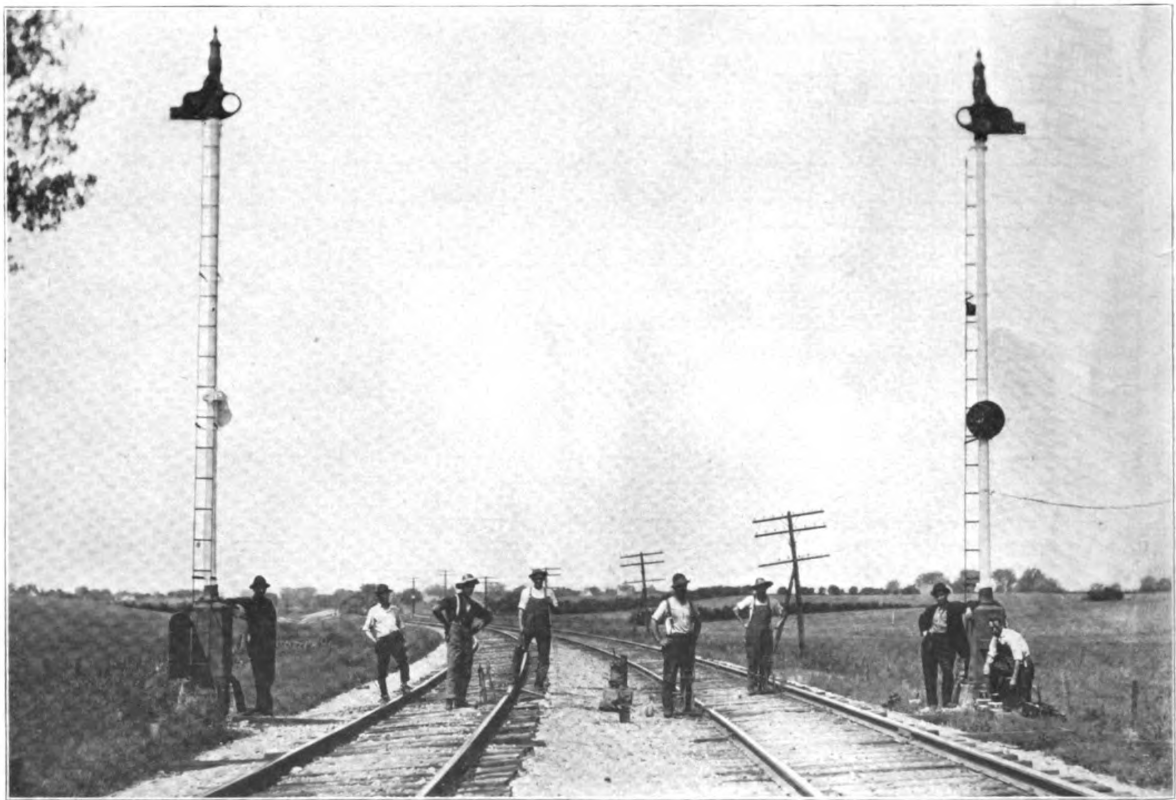
Oakland, Neb., August 19, 1910.

A. E. BOYCE.

**CONSTRUCTION CREW ON THE C. M. & ST. P.**

TO THE EDITOR OF THE SIGNAL ENGINEER:

The photograph shows the signal department construction crew at work on the C. and C. B. division of the Chicago, Milwaukee & St. Paul. They are putting in service the Union Style "S" upper quadrant signals which have recently been installed. The photograph was taken at a point be-



Signal Department Construction Crew on Chicago, Milwaukee & St. Paul.

with ladders, for there is nothing more exasperating than to go to a bell, and find it out of order, and no means at hand by which to get up to it. I have helped maintainers many times to carry cattle guards to bell poles, so as to be able to get to them for adjustment and pull out things foreign to the bell, such as spiders and small pieces of sticks broken off short in the bell case by mischievous boys.

tween Itasca, Ill., and Wooddale, Ill. Reading from left to right the men in the picture are S. V. Bassett, construction foreman; A. H. Blundell, who is doing the line work; F. F. Steltz, who is drilling track; T. J. Wilkenson, who is bonding; E. Wirth and J. Schnider, who are drilling track; J. H. Wolf and J. Schaffer, who is wiring the relays.

Chicago, Ill., August 25, 1910.

J. H. WOLF