

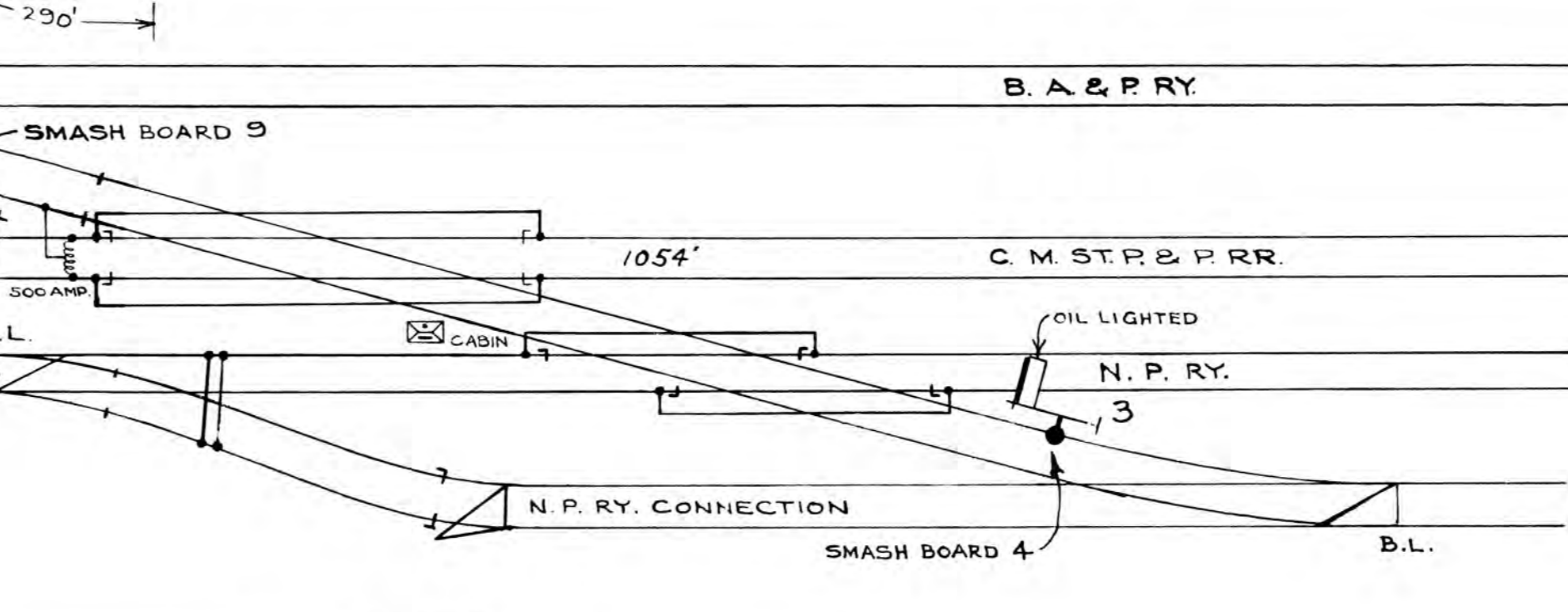
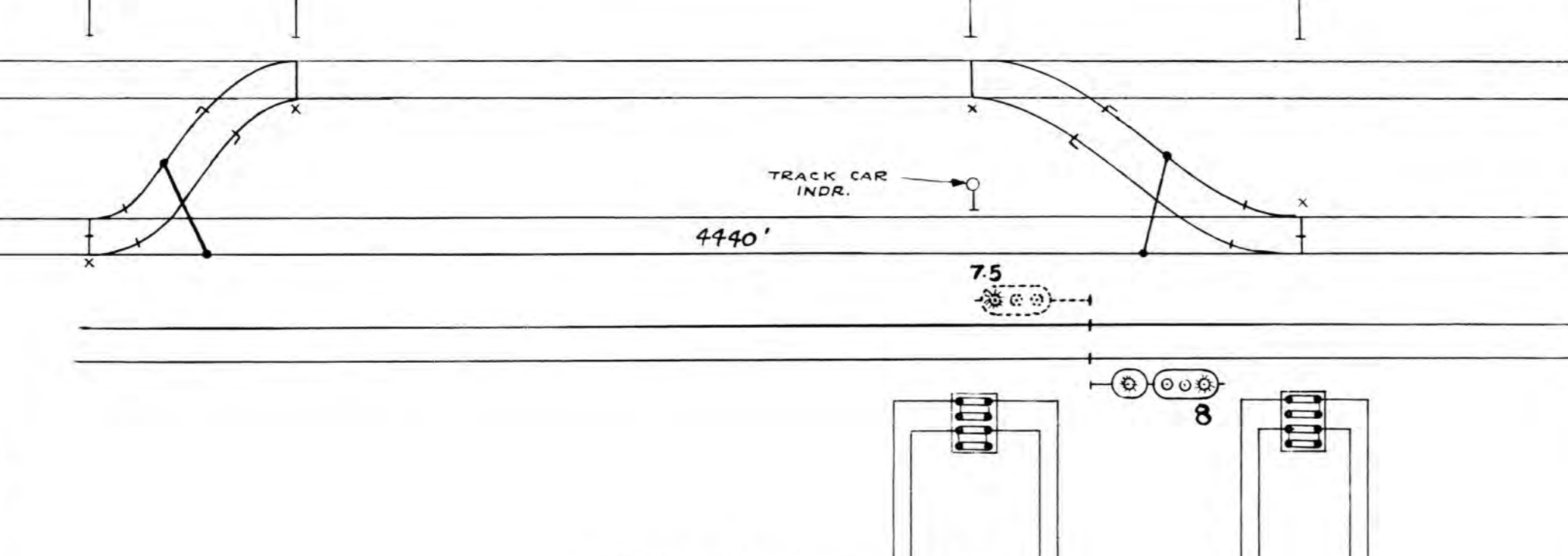
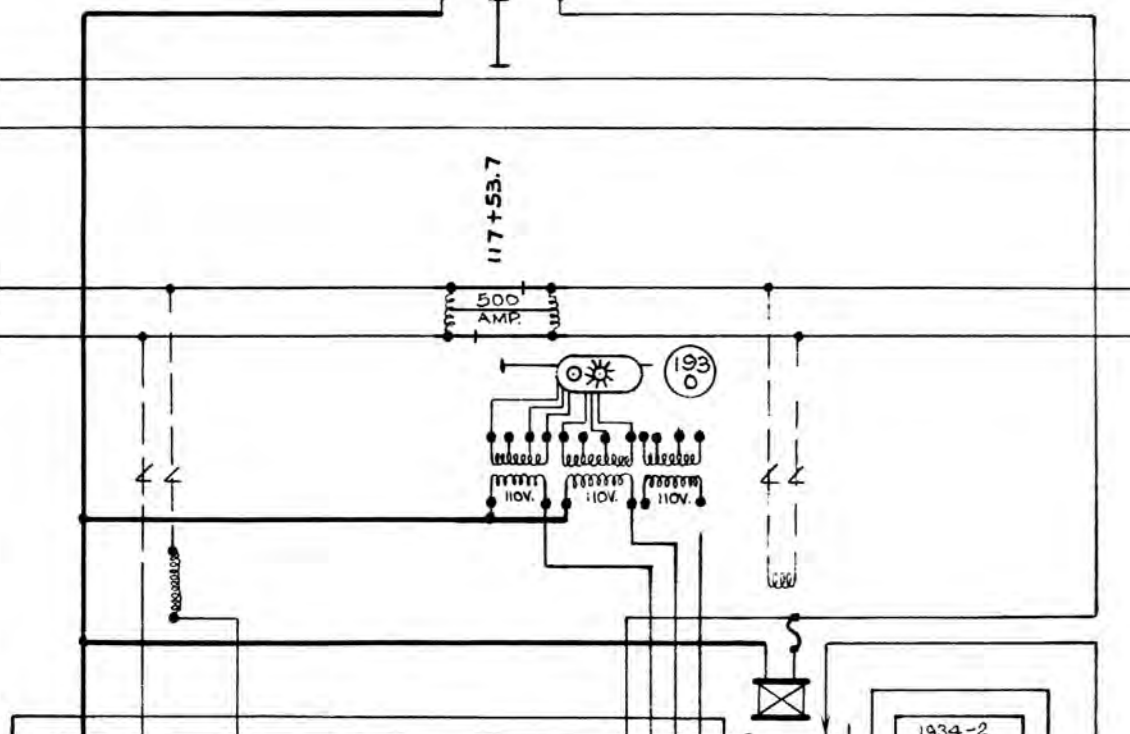
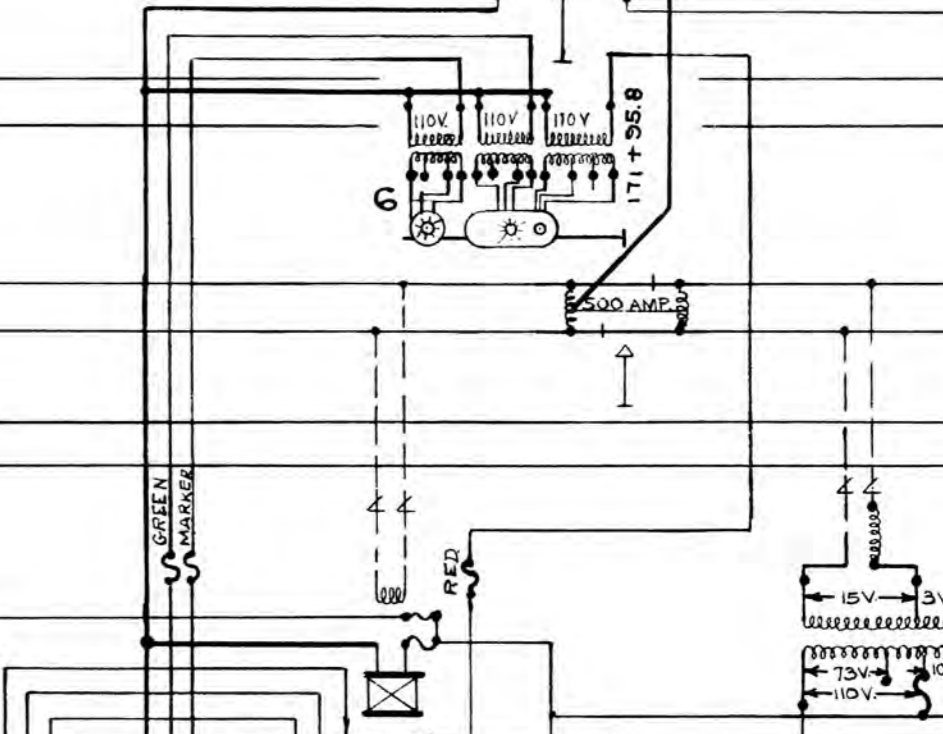
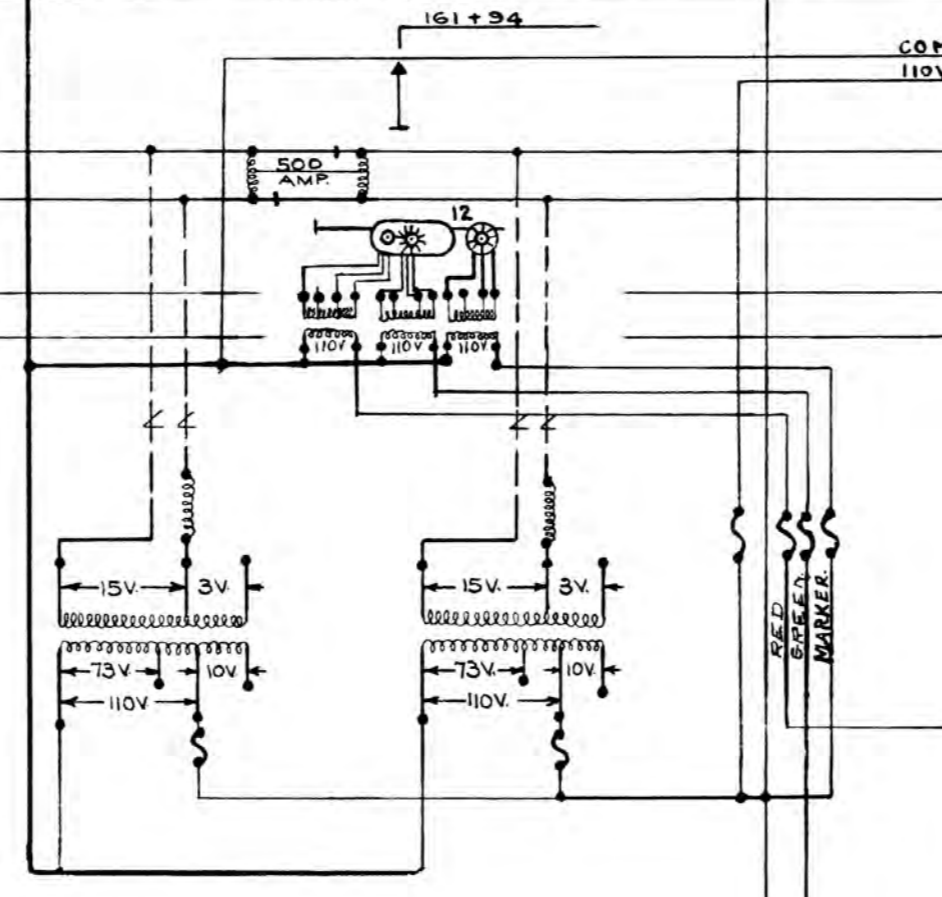
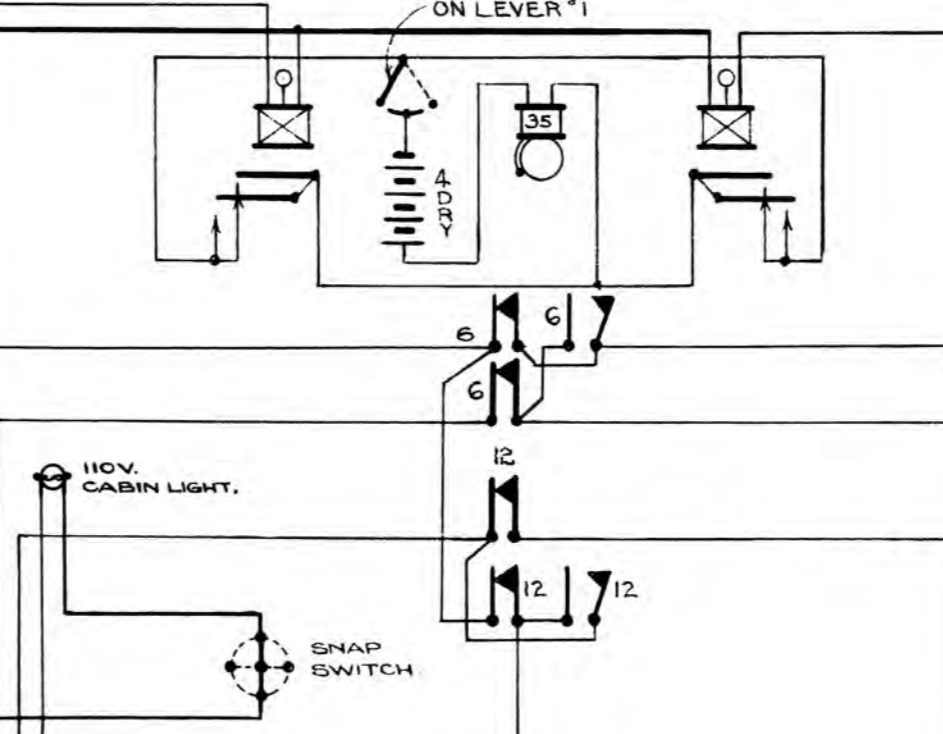
- 10] REVISED TO SHOW SIGNAL NUMBER 10 AT SILVER BOW ELECTRICALLY LIGHTED AS PER MARKED PRINT ACCOMPANYING LETTER FROM L.W.S. DATE, JAN. 28, 1930.
- 11] REVISED TO SHOW 170 TRANSFORMER AT SIG. 191-5 & CON OF SIG 189-9 TAKING 110V D.C. PER LETTER FROM L.W.S. DATED 8-6-30 & IN CONNECTION WITH A.F.E. 29911.
- 12] REVISED ACCOUNT OF DETAILS REMOVED, FIXED UNIT ADDED ON MILWAUKEE HOME SIGNALS, SMASH BOARDS ON N.P. AND B.A. & P.R.Y. ADDED, AND MILWAUKEE HOME & DISTANT SIGNALS MADE 2 POSITION A.F.E. 40932.
- 13] SOURCE OF POWER FOR CABIN LIGHT TAKEN FROM TRANSFORMER AT SIG. 6 INSTEAD OF FROM TRANSFORMER AT SIG. 12.
- 14] TRACK CAR INDERS. IN COLORED PRINT ACCOMPANYING LETTER FROM L.W.S. DATED 7-9-37.
- 15] REVISED ACCOUNT OF MECHANICAL HOME AND POWER DISTANT SIGNALS REPLACED WITH AUTOMATIC LIGHT SIGNALS ON N.P.R.Y. THRU SILVER BOW PLANT.
- 16] SERVICE DATE, 1-25-28.
- 17] NORTHERN PACIFIC DISTANT SIGNALS FOR SILVER BOW INTERLOCKING CONTROL TO LINE CONTROL TO ELIMINATE FOREIGN PER LETTER FROM LWS DATED 5-15-28.
- 18] REVISED TO AGREE WITH MARKED PRINT & SWITCH DATED 12-15-28.
- 19] REVISED TO AGREE WITH MARKED PRINT & SWITCH DATED 12-15-28.
- 20] REVISED TO AGREE WITH MARKED PRINT & SWITCH DATED 12-15-28.
- 21] SOURCE OF POWER FOR CABIN LIGHT TAKEN FROM TRANSFORMER AT SIG. 6 INSTEAD OF FROM TRANSFORMER AT SIG. 12.
- 22] CROSSOVER FROM B.A. & P.R.Y. TRACK TO MILWAUKEE MAIN LINE SHOWN 500 EAST OF SIG. 12 AND CIRCUITS ADDED FOR SAME.
- 23] XOVER INSTALLED 600 WEST OF SIG. 12 AT SILVER BOW BETWEEN C.M. ST. & P.R.R. & B.A. & P.R.Y.
- 24] OIL SWITCH TAKEN OUT AT SILVER BOW.
- 25] SECOND CONTACTS ON TAIL LEVERS TO BE ADDED MARKER LIGHTS ON HOME SIGNALS CHANGED TO OIL TYPE.
- 26] HOME SIGNALS CHANGED FROM SEMAPHOR TO LIGHT TYPE.

BUTTE TO DEER LODGE
 AUTOMATIC SIGNAL CIRCUITS
 C. M. ST. & P. R. R.
 SIGNAL DEPT.
 13 SHEETS SHEET 58
 Hamilton to Deer Lodge

6-7 & 1915-3 COM	1899-6 6-4 1930 & 1935-S.1. COM.	1930-3 1934-3 1934-INDR & 1915-2	1899-6 6-2 COM	1899-6 6-2 12-N COM	1899-5 1915-1 COM
1934-1 1935-S.1.	1930-1 1934-5 1930 & 1935-S.1.	1930-4 1934-3 1934-INDR & 1915-2	1930-5 1930-5 1934-3 1934-INDR & 1915-2	1930-5 1934-3 1934-INDR & 1915-2	1915-1 1930-6 & INDR 1934-4

IN TRUNKING

- 6-N
- 110V.
- 1930 INDR.
- 12-1
- 12
- 6-1
- COM.
- 1934-INDR.
- 12-N



500' 300' 2710' 330' 600' 507' 20' 527' 2657'

4400V SUPPLEMENTARY NEGATIVE 4400V
 SILVER BOW INTERLOCKING

SILVER BOW

B. A. & P. R. Y.

C. M. ST. & P. R. R.

N. P. R. Y.

2657'

4440'

110V, 10W. TRACK CAR INDR. (IN OLD MARKER LAMP BODY.)

SMASH BOARD 3

SMASH BOARD 4

SMASH BOARD 2

SMASH BOARD 7

TEST COM.

SPARE