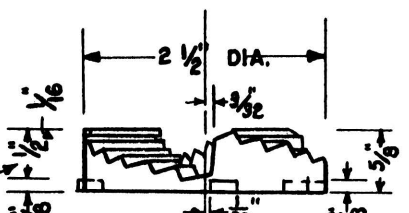
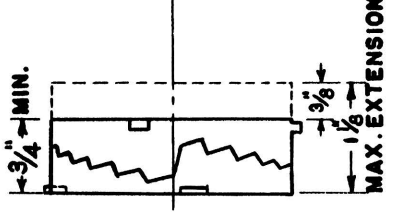
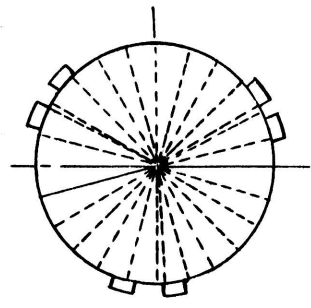


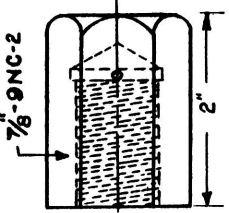
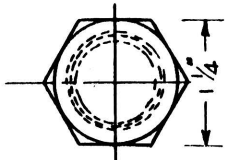
ASSEMBLY TO PROVIDE SIX 1/16" STEP ADJUSTMENT.



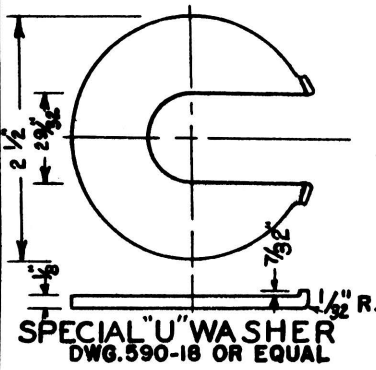
HALF ADJUSTER
(MALL. IRON)
DWG. 54654



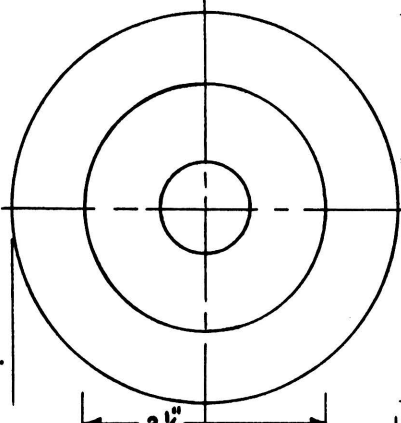
ADJUSTER COMPL.



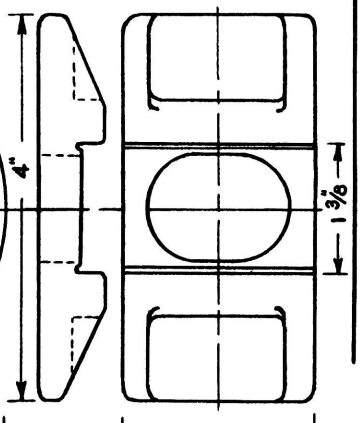
SPECIAL HEX. GREASE NUT.
DWG. 55627-2
OR EQUAL.
SAE-III12 C.D.
STEEL-CADMIUM PLATED.



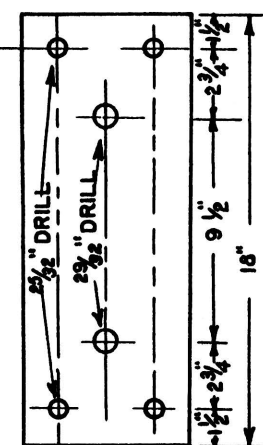
SPECIAL "U" WASHER
DWG. 590-18 OR EQUAL



WASHER
CAST IRON

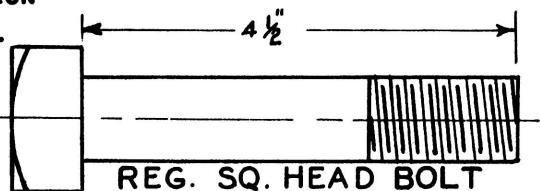


ANCHOR WASHER
DWG. 55625 OR EQUAL
CAST STEEL



INDUCTOR BASE PLATE
SAE 1020 STEEL
DWG. 34999-18
SCALE 1 1/2" = 1"

X = $\frac{15}{16}$ " FOR 112-115 LB. RAIL
DWG. 4333-5
 $\frac{11}{16}$ " FOR 110 LB. RAIL
DWG. 4333-4



REG. SQ. HEAD BOLT
7/8"-9NC-2X4 1/2" DWG. 55626-3
110-112-115 LB. RAIL USE 5" BOLT DWG. 55626-4

C.&N.W.R.Y.
INDUCTOR FASTENING DETAILS
INTERMITTENT INDUCTIVE TRAIN STOP SYSTEM

OFFICE OF ASST. CHIEF ENGR.-C. & S.
CHICAGO ILL. 5-18-51
SCALE 1/2" = 1" EXCEPT AS NOTED.

C.&N.W.R.Y.
S.D.X132

DRAWN BY *J.S.P.*
TRACED BY *R.R.* CHECKED BY