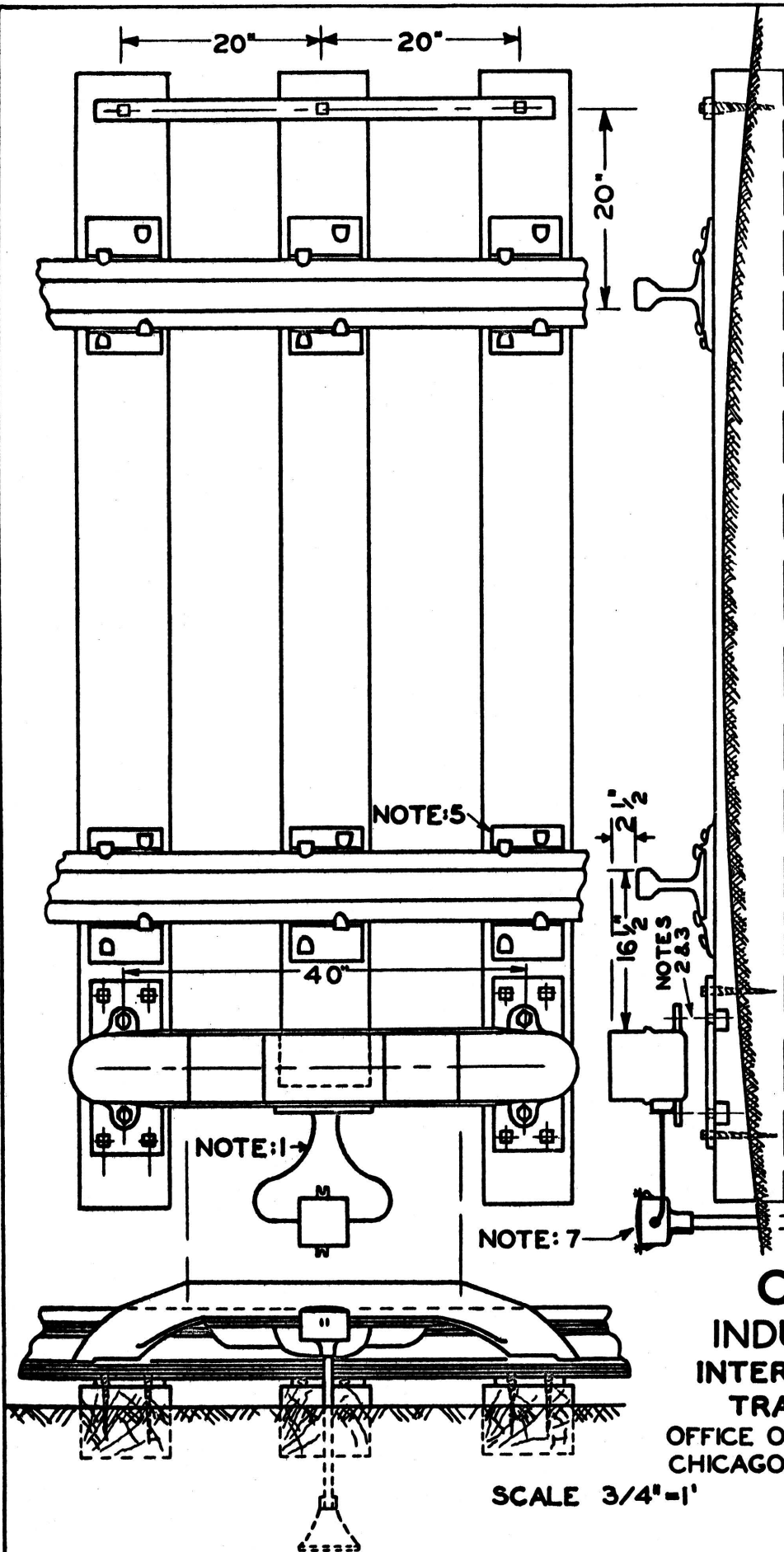


MADE 5-18-51

REVISIONS



NOTES:

- 1. SINGLE CONDUCTOR NO. 8 A.W.G., 19 STRAND TRENCH CABLE.
- 2. SEE S.D.X131 INDUCTOR FASTENINGS - ASSEMBLIES.
- 3. SEE S.D.X132 " " - DETAIL.
- 4. SEE S.D.X128 " " TIE FRAMING.
- 5. DOUBLE-SHOULDER TIE PLATES DOUBLE-SPIKED SHALL BE PROVIDED.
- 6. RAIL ANCHORS NOT TO BE USED AGAINST INDUCTOR TIES.
- 7. POTHEAD TO BE LEVEL WITH TOP OF RAIL.
- 8. SEE S.D.X133 INDUCTOR-RECEIVER GAUGE.

C.&N.W.RY.
INDUCTOR LAYOUT
INTERMITTENT INDUCTIVE
TRAIN STOP SYSTEM

OFFICE OF ASST. CHIEF ENGR. C.&S.
 CHICAGO, ILL. 5-18-51

SCALE 3/4" = 1'

C.&N.W.RY.
S.D.X 129

DRAWN BY *Edh.*
 TRACED BY *Rd* CHECKED BY *Rd*
1951