

FORTY-SECOND ANNUAL REPORT

OF THE

Railroad and Warehouse Commission

OF THE

STATE OF ILLINOIS

For the Year Ending June 30, 1912

**Decisions and Opinions of the Commission
December 1, 1911 to December 1, 1913, inclusive**

COMMISSIONERS

ORVILLE F. BERRY, Chairman JAMES A. WILLOUGHBY,
BERNARD A. ECKHART.

WILLIAM KILPATRICK, Secretary.
CHARLES J. SMITH, Assistant Secretary.
FRANK G. EWALD, Consulting Engineer.
W. A. VAN HOOK, Assistant Engineer.
A. R. LAYMAN, Safety Appliance Inspector.
THOMAS L. WOLF, Rate Clerk.

Volume II.



SPRINGFIELD, ILL.
ILLINOIS STATE JOURNAL CO., STATE PRINTERS
1913

ORDERS OF THE

Railroad and Warehouse Commission

APPROVING THE OPERATION OF

INTERLOCKING PLANTS.

OPERATION OF INTERLOCKING PLANTS.

BEFORE THE RAILROAD AND WAREHOUSE COMMISSION OF THE STATE OF ILLINOIS.

In the matter of the application of the Chicago & Northwestern Railway Company for approval of plans covering additions to the interlocking plant at Clybourn Junction, Chicago, Ill.

It appearing to the commission that the Chicago & Northwestern Railway Company has made application to this commission for the approval of plans covering certain additions to the interlocking plant at Clybourn Junction, Chicago, Ill., at which point the tracks of the Chicago, Milwaukee & St. Paul Railroad Company cross at grade the tracks of the Chicago & Northwestern Railway; and the plans having been examined and approved by F. G. Ewald, consulting engineer of said commission, and the commission being fully advised in the premises;

It is therefore ordered, adjudged and decreed that the said additions to said interlocking plant be, and the same are hereby authorized; and when said additions are completed, the said petitioner shall report the same to this commission for its approval.

By order of the commission this 8th day of December, 1911, dated at Springfield, Ill.

[Signed] O. F. BERRY, *Chairman.*

BEFORE THE RAILROAD AND WAREHOUSE COMMISSION OF THE STATE OF ILLINOIS.

Miscellaneous Docket No. 288.

Railroad and Warehouse Commission

v.

Grand Trunk Western Railway
Chicago & Eastern Illinois R. R.

In the matter of conditions of interlocking plant at Thornton Junction, Ill.

The commission heretofore having cited the defendant railroads to be and appear before this commission on Dec. 7, 1911, for the purpose of showing cause, if any, why the interlocking plant at Thornton Junction, Ill., should not be reconstructed according to plans to be approved by this commission.

And the said cause coming on for hearing and it appearing from the statements of the parties representing the respective roads, that they were willing to comply with the request of the commission, and it appearing that the Grand Trunk Western Railway should, under the showing made before the commission, make such improvements and reconstruction;

It is therefore ordered that the said Grand Trunk Western Railway submit plans for said reconstruction of said interlocking plant to the engineer of this commission within thirty days from this date for his approval and complete said reconstruction within sixty days from this date.

By order of the commission this 7th day of December, 1911, dated at Springfield, Ill.

[Signed] O. F. BERRY, *Chairman.*

BEFORE THE RAILROAD AND WAREHOUSE COMMISSION OF THE STATE OF ILLINOIS.

No. 527.

East St. Louis, Columbia & Waterloo Ry.

v.

The St. Louis Valley Ry.
St. Louis, Iron Mountain & Southern Ry.
and the

No. 528.

East St. Louis, Columbia & Waterloo Ry.

v.

Illinois Central R. R.
and the

No. 529.

East St. Louis, Columbia & Waterloo Ry.

v.

East St. Louis & Carondelet Ry.

In the matter of an application for an extension of time in which to submit to this commission plans and specifications for an interlocking plant, also time for the completion of said plant near Dupo, Ill.

Now, on this day comes the petitioner and shows to the commission that on account of delays in erecting said crossings and other matters, they have been unable to prepare and present to the commission their plans and specifications for the interlocking plant as required by the original orders entered in said cases.

And it appearing to the commission that said delay was unavoidable and that no injury can come to any of the parties in interest, and all consenting thereto, and the commission being fully advised;

It is therefore ordered, adjudged and decreed by the commission that the time for the filing of said plans and specifications for said interlocking plant be, and the same is hereby extended to April 1, 1912, and the time for the installation and completion of said interlocking plant be and the same is hereby extended to June 1, 1912.

By order of the commission this 12th day of December, 1911, dated at Springfield, Ill.

[Signed] O. F. BERRY, *Chairman.*

BEFORE THE RAILROAD AND WAREHOUSE COMMISSION OF THE STATE OF ILLINOIS.

In the matter of the application of the Illinois Traction System for approval of changes in original plans covering the construction of a new interlocking plant at LeClaire, Ill.

It appearing to the commission that the Illinois Traction System has made an application to this commission for approval of plans showing a change in the original plans covering the construction of a new interlocking plant at LeClaire, Ill., at which point the main track of the Illinois Traction System's belt line crosses the tracks of the St. Louis & Illinois Belt Railway Company, the Litchfield & Madison Railroad Company and the Toledo, St. Louis & Western R. R. Co.; and the plans having been examined and approved by F. G. Ewald, consulting engineer of this commission, and the commission being fully advised in the premises;

It is therefore ordered, adjudged and decreed that the Illinois Traction System be, and the same is hereby authorized to construct and install said interlocking plant according to said plans; and when this interlocking plant is completed, said petitioner shall report the same to this commission for its approval.

By order of the commission this 21st day of December, 1911, dated at Springfield, Ill.

[Signed] O. F. BERRY, *Chairman.*

BEFORE THE RAILROAD AND WAREHOUSE COMMISSION OF THE STATE OF ILLINOIS.

In the matter of the application of the Pennsylvania Company for approval of plans covering the construction of a new interlocking plant at Hegewisch, Ill.

It appearing to the commission that the Pennsylvania Company has made application to this commission for the approval of plans for a new interlocking plant at Hegewisch, Ill., at which point tracks operated by the Pennsylvania Company form junctions; and the plans having been examined and approved by F. G. Ewald, consulting engineer of said commission, and the commission being fully advised in the premises;

It is therefore ordered, adjudged and decreed that the said Pennsylvania Company be, and the same is hereby authorized to install and construct according to said plans, said interlocking plant; and when same is completed, said petitioner shall report the fact to this commission for its approval.

By order of the commission this 21st day of December, 1911, dated at Springfield, Ill.

[Signed] O. F. BERRY, *Chairman.*

BEFORE THE RAILROAD AND WAREHOUSE COMMISSION OF THE STATE OF ILLINOIS.

In the matter of the application of the Chicago & Northwestern Railway Company for approval of plans covering certain changes in the interlocking plant at River Junction, Ill.

And it appearing to the commission that the Chicago & Northwestern Railway Company has made application to this commission for approval of plans covering certain changes in the interlocking plant at River Junction, Ill., at which point is a junction of the tracks of the Chicago & Northwestern Railway Company; and the plans having been examined and approved by F. G. Ewald, consulting engineer of said commission, and the commission being fully advised in the premises;

It is therefore ordered, adjudged and decreed that the said changes to said interlocking plant be, and the same are hereby authorized; and when said changes are completed, said petitioner shall report the same to this commission for its approval.

By order of this commission this 29th day of December, 1911, dated at Springfield, Ill.

[Signed] O. F. BERRY, *Chairman.*

BEFORE THE RAILROAD AND WAREHOUSE COMMISSION OF THE STATE OF ILLINOIS.

In the matter of the application of the Chicago & Northwestern Railway Company for approval of plans covering certain changes in the interlocking plant at Skokie, Ill.

It appearing to the commission that the Chicago & Northwestern Railway Company has made application to this commission for the approval of plans covering certain changes in the interlocking plant at Skokie, Ill., at which point is a junction of the Chicago & Northwestern Railway tracks; and the plans having been examined and approved by F. G. Ewald, consulting engineer of said commission, and the commission being fully advised in the premises;

It is therefore ordered, adjudged and decreed that the said changes be, and the same are hereby authorized; and when said changes in said interlocking plant are completed, the said petitioner shall report the same to this commission for its approval.

By order of the commission this 29th day of December, 1911, dated at Springfield, Ill.

[Signed] O. F. BERRY, *Chairman.*

BEFORE THE RAILROAD AND WAREHOUSE COMMISSION OF THE STATE OF ILLINOIS.

In the matter of the application of the Illinois Central Railroad Company for approval of plans covering certain changes in the interlocking plant at Champaign, Ill.

It appearing to the commission that the Illinois Central Railroad Company has made application to this commission for the approval of plans covering certain changes in the interlocking plant at Champaign, Ill., at which point the tracks of the Illinois Central Railroad Company cross at grade the tracks of the Wabash Railroad Company and the Cleveland, Cincinnati, Chicago & St. Louis Railway Company; and it appearing that the desired changes consist in the substitution of one set of Alexander crossing frogs for a set of rigid crossing frogs; and the plans having been examined and approved by F. G. Ewald, consulting engineer of said commission, and the commission being fully advised in the premises;

It is therefore ordered, adjudged and decreed that the said changes in said interlocking plant be, and the same are hereby authorized; and when same are completed, the said petitioner shall report same to this commission for its approval.

By order of the commission this 29th day of December, 1911, dated at Springfield, Ill.

[Signed] O. F. BERRY, *Chairman.*

BEFORE THE RAILROAD AND WAREHOUSE COMMISSION OF THE STATE OF ILLINOIS.

Miscellaneous Docket No. 288.

Railroad and Warehouse Commission

v.

Grand Trunk Western Railway Co.
Chicago & Eastern Illinois R. R.

In the matter of application for extension of time in which to make changes ordered by commission in the interlocking plant at Thornton Junction, Ill.

Now on this day comes the defendant Grand Trunk Western Railway Company herein and moves the commission for an extension of time in which to make certain changes ordered by this commission in the interlocking plant at Thornton Junction, Ill., and it appearing to this commission that the reasons given therefor, are good and sufficient, and the commission being fully advised in the premises;

It is therefore ordered, adjudged and decreed that the time for completion of changes ordered in said interlocking plant be, and the same is hereby extended to May 1, 1912, said changes to be made in accordance with plans which shall have received the approval of the commission.

By order of the commission this 2nd day of January, 1912, dated at Springfield, Ill.

[Signed] O. F. BERRY, *Chairman.*

BEFORE THE RAILROAD AND WAREHOUSE COMMISSION OF THE STATE OF ILLINOIS.

In the matter of the application of the Chicago & Northwestern Railway Company for approval of plans covering certain changes in the interlocking plant at Noble Street Junction, Chicago, Ill.

It appearing to the commission that the Chicago & Northwestern Railway Company has made application to this commission for approval of plans covering certain changes in the interlocking plant at Noble Street Junction, Chicago, Ill., at which point junctions are formed by the tracks of the Chicago

& Northwestern Railway Company; and the plans having been examined and approved by F. G. Ewald, consulting engineer of said commission, and the commission being fully advised in the premises;

It is therefore ordered, adjudged and decreed that the said changes in said interlocking plant be, and the same are hereby authorized; and when said changes are completed, said petitioner shall so report to this commission for its approval.

By order of the commission this 2nd day of January, 1912, dated at Springfield, Ill. ,

[Signed] O. F. BERRY, *Chairman.*

BEFORE THE RAILROAD AND WAREHOUSE COMMISSION OF THE STATE OF ILLINOIS.

In the matter of the application of the Cleveland, Cincinnati, Chicago & St. Louis Railway Company for approval of plans covering certain changes in the interlocking plant at Hazel st., Danville, Ill.

It appearing to the commission that the Cleveland, Cincinnati, Chicago & St. Louis Railway Company has made application to this commission for approval of plans covering certain additions to the interlocking plant at Hazel st., Danville, Ill., at which point junctions are formed by the tracks of the Cleveland, Cincinnati, Chicago & St. Louis Railway Company and the Chicago, Indiana & Southern Railroad Company, and it appearing that said additions consist of two additional signals to be constructed at the said interlocking plant; and the plans having been examined and approved by F. G. Ewald, consulting engineer of said commission, and the commission being fully advised in the premises;

It is therefore ordered, adjudged and decreed that the said additions to said interlocking plant be, and the same are hereby authorized; and when said additions are completed, said petitioner shall so report to this commission, for its approval.

By order of the commission this 2nd day of January, 1912, dated at Springfield, Ill.

[Signed] O. F. BERRY, *Chairman.*

BEFORE THE RAILROAD AND WAREHOUSE COMMISSION OF THE STATE OF ILLINOIS.

In the matter of the application of the St. Louis, Iron Mountain & Southern Railway Company for approval of plans covering certain changes in the interlocking plant at Thebes, Ill.

It appearing to the commission that the St. Louis, Iron Mountain & Southern Railway Company has made application to this commission for approval of plans covering certain changes in the interlocking plant at Thebes, Ill., said change being a change in the location of the derail No. 15 which is located in the north leg of the "Y" switch at Thebes; and the plans having been examined and approved by F. G. Ewald, consulting engineer of said commission, and the commission being fully advised in the premises;

It is therefore ordered, adjudged and decreed that the said changes in said interlocking plant be, and the same are hereby authorized; and when said changes are completed, said petitioner shall so report to this commission for its approval.

By order of the commission this 2d day of January, 1912, dated at Springfield, Ill.

[Signed] O. F. BERRY, *Chairman.*

BEFORE THE RAILROAD AND WAREHOUSE COMMISSION OF THE STATE OF ILLINOIS.

In the matter of the application of the Chicago & Alton Railroad Company for approval of plans covering certain changes in the interlocking plant at McNabb, Ill.

It appearing to the commission that the Chicago & Alton Railroad Company has made application to this commission for approval of plans covering certain changes in the interlocking plant at McNabb, Ill., at which point a junction is formed by the tracks of the Chicago, Indiana & Southern Railroad Company, and a branch line operated by the Chicago & Alton Railroad Company formerly known as Tuloca, Marquette & Northern Railroad Company; and the plans having been examined and approved by F. G. Ewald, consulting engineer of said commission, and the commission being fully advised in the premises;

It is therefore ordered, adjudged and decreed that the said changes to said interlocking plant be, and the same are hereby authorized; and when said changes are completed, said petitioner shall so report to this commission for its approval.

By order of the commission this 11th day of January, 1912, dated at Springfield, Ill.

[Signed] O. F. BERRY, *Chairman.*

BEFORE THE RAILROAD AND WAREHOUSE COMMISSION OF THE STATE OF ILLINOIS.

In the matter of the application of the Chicago, Milwaukee & St. Paul Railway Company for approval of plans covering certain changes and additions to the interlocking plant at Kingston, Ill.

It appearing to the commission that the Chicago, Milwaukee & St. Paul Railway Company has made application to this commission for approval of plans covering certain changes and additions to the interlocking plant at Kingston, Ill., at which point a main track of the Chicago & Northwestern Railway Company crosses the two main tracks of the Chicago, Milwaukee & St. Paul Railway Company; and the plans having been examined and approved by F. G. Ewald, consulting engineer of said commission and the commission being fully advised in the premises;

It is therefore ordered, adjudged and decreed that the said changes and additions to said interlocking plant be, and the same are hereby authorized; and it appearing to the commission that the main track derails, as now located, are not far enough away from the fouling points, and do not conform to the present rules of the commission, and it appearing to the commission that such change in said derails cannot on account of the weather and other matters, be made at this time;

It is therefore ordered, adjudged and decreed by the commission that such derails be and they are hereby directed to be changed and made to comply with the rules of this commission on or before June 1, 1912.

By order of the commission this 11th day of January, 1912, dated at Springfield, Ill.

[Signed] O. F. BERRY, *Chairman.*

BEFORE THE RAILROAD AND WAREHOUSE COMMISSION OF THE STATE OF ILLINOIS.

In the matter of the application of the Chicago & Northwestern Railway Company for approval of plans covering certain changes in the interlocking plant at Deering, Ill.

It appearing to the commission that the Chicago & Northwestern Railway Company has made application to this commission for approval of plans

covering certain changes in the interlocking plant at Deering, Ill., at which point is located a drawbridge and junction of tracks operated by the Chicago & Northwestern Railway Company; and it appearing that the desired changes consist of changes in routing of certain signals, and an additional signal No. 13; and the plans having been examined and approved by F. G. Ewald, consulting engineer of said commission, and the commission being fully advised in the premises;

It is therefore ordered, adjudged and decreed that the said changes to said interlocking plant be, and the same are hereby authorized; and when said changes are completed, said petitioner shall so report to this commission for its approval.

By order of the commission this 11th day of January, 1912, dated at Springfield, Ill.

[Signed] O. F. BERRY, *Chairman*.

BEFORE THE RAILROAD AND WAREHOUSE COMMISSION OF THE STATE OF ILLINOIS.

In the matter of the application of the Chicago & Northwestern Railway Company for approval of plans covering changes in the interlocking plant at Sangamon, st., Chicago, Ill.

It appearing to the commission that the Chicago & Northwestern Railway Company has made application to this commission for approval of plans covering certain changes in the interlocking plant at Sangamon st., Chicago, Ill., at which point there is a junction of some tracks owned and operated by the Chicago & Northwestern Railway Company; and the plans having been examined and approved by F. G. Ewald, consulting engineer of said commission, and the commission being fully advised in the premises;

It is therefore ordered, adjudged and decreed that said changes to said interlocking plant be, and the same is hereby authorized; and when said changes are completed, said petitioner shall report the same to this commission for its approval.

By order of the commission this 23rd day of January, 1912, dated at Springfield, Ill.

[Signed] O. F. BERRY, *Chairman*.

BEFORE THE RAILROAD AND WAREHOUSE COMMISSION OF THE STATE OF ILLINOIS.

In the matter of the application of the Chicago, Burlington & Quincy Railroad Company for approval of certain additions to interlocking plant at Mendota, Ill.

It appearing to the commission that the Chicago, Burlington & Quincy Railroad Company has made application to this commission for the approval of plans covering certain additions to the interlocking plant at Mendota, Ill.; and the plans having been examined and approved by F. G. Ewald, consulting engineer of said commission, and the commission being fully advised in the premises;

It is therefore ordered, adjudged and decreed that the said additions to said interlocking plant be, and the same are hereby authorized; and when said additions are completed, the said petitioner shall report the same to this commission for its approval.

By order of the commission this 12th day of February, 1912, dated at Springfield, Ill.

[Signed] O. F. BERRY, *Chairman*.

BEFORE THE RAILROAD AND WAREHOUSE COMMISSION OF THE STATE OF ILLINOIS.

In the matter of the application of the Chicago, Burlington & Quincy Railroad Company for approval of plans covering the construction of a new interlocking plant at Beardstown, Ill.

It appearing to the commission that the Chicago, Burlington & Quincy Railroad Company has made application to this commission for approval of plans covering the construction of a new interlocking plant, and also made application for approval of certain changes in the original plans submitted for this interlocking plant to be constructed at Beardstown, Ill., for the purpose of protecting train movements across the drawbridge spanning the Illinois River, at that point; and the plans having been examined and approved by F. G. Ewald, consulting engineer of said commission, and the commission being fully advised in the premises;

It is therefore ordered, adjudged and decreed that the said Chicago, Burlington & Quincy Railroad Company be, and the same is hereby authorized to construct and install according to said plans, said interlocking plant; and when this interlocking plant is completed, said petitioner shall report the same to this commission for its approval.

By order of the commission this 13th day of February, 1912, dated at Springfield, Ill.

[Signed] O. F. BERRY, *Chairman.*

BEFORE THE RAILROAD AND WAREHOUSE COMMISSION OF THE STATE OF ILLINOIS.

In the matter of the application of the Illinois Central Railroad Company for approval of plans showing certain changes and additions to the interlocking plant at Blue Island Junction, Ill.

It appearing to the commission that the Illinois Central Railroad Company has made application to this commission for approval of plans covering certain changes and additions to the interlocking plant at Blue Island Junction, Ill., at which point the main tracks of the Chicago & Western Indiana Railroad Company cross at grade the main tracks of the Illinois Central Railroad Company, including a junction of a branch line of the Illinois Central Railroad Company known as the Blue Island Branch; and the plans having been examined and approved by F. G. Ewald, consulting engineer of said commission, and the commission being fully advised in the premises;

It is therefore ordered, adjudged and decreed that said changes and additions to said interlocking plant be and the same are hereby authorized and when said changes and additions are completed, said petitioner shall report the same to this commission for its approval.

By order of the commission this 8th day of March, 1912, dated at Springfield, Ill.

[Signed] O. F. BERRY, *Chairman.*

BEFORE THE RAILROAD AND WAREHOUSE COMMISSION OF THE STATE OF ILLINOIS.

In the matter of the application of the St. Louis, Iron Mountain & Southern Railway Company for approval of plans for a new interlocking plant at Cairo, Ill.

It appearing to the commission that the St. Louis, Iron Mountain & Southern Railway Company has made application to this commission for approval of plans for a new interlocking plant to be constructed and installed at Cairo, Ill., near Washington av., at which point the main track of the Cairo & Thebes Railroad Company, now operated by the St. Louis, Iron Mountain & Southern Railway Company, crosses at grade the main

track of the Mobile & Ohio Railroad Company; and the plans having been examined and approved by F. G. Ewald, consulting engineer of said commission, and the commission being fully advised in the premises;

It is therefore ordered, adjudged and decreed that the said St. Louis, Iron Mountain & Southern Railway Company be, and the same is hereby authorized to construct and install according to said plans, said interlocking plant; and when this interlocking plant is completed, said petitioner shall report the same to this commission for its approval.

By order of the commission this 8th day of March, 1912, dated at Springfield, Ill.

[Signed] O. F. BERRY, *Chairman.*

BEFORE THE RAILROAD AND WAREHOUSE COMMISSION OF THE STATE OF ILLINOIS.

In the matter of the application of the Chicago, Rock Island & Pacific Railway Company for approval of plans for certain additions to the interlocking plant at Gresham, (Chicago), Ill.

It appearing to the commission that the Chicago, Rock Island & Pacific Railway Company has made application to this commission for approval of plans covering certain additions to the interlocking plant at Gresham, (Chicago) Ill., formerly known as the South Englewood plant; and it further appearing that said additions consist of two fixed arms and two calling-on arms No. 94 and No. 110; and the plans having been examined and approved by F. G. Ewald, consulting engineer of said commission, and the commission being fully advised in the premises;

It is therefore ordered, adjudged and decreed that the said additions to said interlocking plant be, and the same are hereby authorized; and when said additions are completed, said petitioner shall report the same to this commission for its approval.

By order of the commission this 8th day of March, 1912, dated at Springfield, Illinois.

[Signed] O. F. BERRY, *Chairman.*

BEFORE THE RAILROAD AND WAREHOUSE COMMISSION OF THE STATE OF ILLINOIS.

In the matter of the application of the Chicago, Rock Island & Pacific Railway Company for approval of revised plans covering the installation of a new interlocking plant at Joliet, (East of), Ill.

It appearing to the commission that the Chicago, Rock Island & Pacific Railway Company has made application to this commission for approval of plans which have been revised for the construction and installation of a new interlocking plant at the junction of the tracks of the Chicago, Rock Island & Pacific Railway Company with the tracks of the Michigan Central Railroad Company at Joliet, (east of), Ill.; and the plans having been examined and approved by F. G. Ewald, consulting engineer of said commission, and the commission being fully advised in the premises;

It is therefore ordered, adjudged and decreed that the said Chicago, Rock Island & Pacific Railway Company be, and the same is hereby authorized to construct and install according to said plans, said interlocking plant; and when this interlocking plant is completed, the said petitioner shall report the same to this commission for its approval.

By order of the commission this 8th day of March, 1912, dated at Springfield, Ill.

[Signed] O. F. BERRY, *Chairman.*

BEFORE THE RAILROAD AND WAREHOUSE COMMISSION OF THE STATE OF ILLINOIS.

In the matter of the application of the Chicago, Burlington & Quincy Railroad Company for approval of plans for the reconstruction of the interlocking plant at Galena Junction, Ill.

It appearing to the commission that the Chicago, Burlington & Quincy Railroad Company has made application to this commission for approval of plans for the reconstruction of the interlocking plant at Galena Junction, Ill., at which point one main track of the Chicago, Burlington & Quincy Railroad Company crosses the Galena River by means of a drawbridge, forms a junction with another main track west of the river, forms a junction with a branch line running to Galena and forms a junction with the main tracks of the Chicago Great Western Railroad Company; and the plans having been examined and approved by F. G. Ewald, consulting engineer of said commission, and the commission being fully advised in the premises;

It is therefore ordered, adjudged and decreed that the plans for the reconstruction of said interlocking plant be, and the same are hereby authorized; and when said interlocking plant has been reconstructed, said petitioner shall report the same to this commission for its approval.

By order of the commission this 8th day of March, 1912, dated at Springfield, Ill.

[Signed] O. F. BERRY, *Chairman.*

BEFORE THE RAILROAD AND WAREHOUSE COMMISSION OF THE STATE OF ILLINOIS.

In the matter of the application of the Wabash, Chester & Western Railroad Company for approval of plans covering certain additions to the interlocking plant at Mt. Vernon, Ill.

It appearing to the commission that the Wabash, Chester & Western Railroad Company has made application to this commission for approval of plans covering certain additions to the interlocking plant at Mt. Vernon, Ill., at which point the main track of the Wabash, Chester & Western Railroad crosses at grade the main track of the Louisville & Nashville Railroad Company; and the plans having been examined and approved by F. G. Ewald, consulting engineer of said commission, and the commission being fully advised in the premises;

It is therefore ordered, adjudged and decreed that the said additions to said interlocking plant be and the same are hereby authorized; and when said additions are completed, said petitioner shall report the same to this commission for its approval.

By order of the commission this 8th day of March, 1912, dated at Springfield, Ill.

[Signed] O. F. BERRY, *Chairman.*

BEFORE THE RAILROAD AND WAREHOUSE COMMISSION OF THE STATE OF ILLINOIS.

In the matter of the application of the Chicago, Milwaukee & St. Paul Railway Company for approval of plans covering certain changes in the interlocking plant at Kingston, Ill.

It appearing to this commission that the Chicago, Milwaukee & St. Paul Railway Company has made application to this commission for approval of plans covering change in the location of the facing point derails connected with the interlocking plant at Kingston, Ill., at which point the main tracks of the Chicago, Milwaukee & St. Paul Railway Company cross at grade the main track of the Chicago and Northwestern Railway Company; and the plans having been examined and approved by F. G. Ewald, consulting engineer of said commission, and the commission being fully advised in the premises;

It is therefore ordered, adjudged and decreed that said changes in interlocking plant be, and the same are hereby authorized; and when said changes are completed, said petitioner shall report the same to this commission for its approval.

By order of the commission this 8th day of March, 1912, dated at Springfield, Ill.

[Signed] O. F. BERRY, *Chairman.*

BEFORE THE RAILROAD AND WAREHOUSE COMMISSION OF THE STATE OF ILLINOIS.

In the matter of the application of the Illinois Central Railroad Company for approval of plans covering changes and additions to the interlocking plant at East Dubuque, Ill.

It appearing to the commission that the Illinois Central Railroad Company has made application to this commission for approval of a revised set of plans covering certain changes and additions to the interlocking plant at East Dubuque, Ill., at which point the main track of the Illinois Central Railroad Company crosses at grade two main tracks of the Chicago, Burlington & Quincy Railroad Company, one side track of their own and the drawbridge spanning the Mississippi River; and the plans having been examined and approved by F. G. Ewald, consulting engineer of said commission, and the commission being fully advised in the premises;

It is therefore ordered, adjudged and decreed that said changes and additions be and the same are hereby authorized and when said changes and additions are completed, said petitioner shall report the same to this commission for its approval.

By order of the commission this 8th day of March, 1912, dated at Springfield Ill.

[Signed] O. F. BERRY, *Chairman.*

BEFORE THE RAILROAD AND WAREHOUSE COMMISSION OF THE STATE OF ILLINOIS.

In the matter of the application of the Illinois Central Railroad Company for approval of plans covering proposed interlocking plant to be constructed and installed at Wenona, Ill.

It appearing to the commission that the Illinois Central Railroad Company has made application to this commission for approval of plans covering construction and installation of proposed interlocking plant at Wenona, Ill., at which point the tracks of the Illinois Central Railroad Company cross at grade the main track of the Chicago & Alton Railroad Company; and the plans having been examined and approved by F. G. Ewald, consulting engineer of said commission, and the commission being fully advised in the premises;

It is therefore ordered, adjudged and decreed that the said Illinois Central Railroad Company be, and the same is hereby authorized to construct and install according to said plans, said interlocking plant; and when this interlocking plant is completed, said petitioner shall report the same to this commission for its approval.

By order of the commission this 8th day of March, 1912, dated at Springfield Ill.

[Signed] O. F. BERRY, *Chairman.*

BEFORE THE RAILROAD AND WAREHOUSE COMMISSION OF THE STATE OF ILLINOIS.

In the matter of the application of the Chicago & Western Indiana Railroad Company for approval of plans covering a proposed arrangement of interlocking to be installed on the new drawbridge spanning the Calumet River, near Dolton, Ill.

It appearing to the commission that the Chicago & Western Indiana Railroad Company has made application to this commission for approval of plans showing a proposed arrangement of interlocking to be installed on the new drawbridge spanning the Calumet River near Dolton, Ill.; and the plans having been examined and approved by F. G. Ewald, consulting engineer of said commission, and the commission being fully advised in the premises;

It is therefore ordered, adjudged and decreed that the said Chicago & Western Indiana Railroad Company be, and the same is hereby authorized to construct and install proposed arrangement of interlocking as per said plans; and when such interlocking arrangement is completed, said petitioner shall report the same to this commission for its approval.

By order of the commission this 8th day of March, 1912, dated at Springfield Ill.

[Signed] O. F. BERRY, *Chairman.*

BEFORE THE RAILROAD AND WAREHOUSE COMMISSION OF THE STATE OF ILLINOIS.

In the matter of the application of the Pittsburgh, Cincinnati, Chicago & St. Louis Railway Company for approval of plans covering certain additions to the interlocking plant at Dolton, Ill.

It appearing to the commission that the Pittsburgh, Cincinnati, Chicago & St. Louis Railway Company has made application to this commission for approval of plans covering an addition to the interlocking plant at Dolton, Ill., which consists of a "Y" track connecting the track of the Indiana Harbor Belt Railroad Company with the tracks of the Chicago & Western Indiana Railroad Company and the Pittsburgh, Cincinnati, Chicago & St. Louis Railway Company; the interlocking plant at this point protects traffic passing through crossings of the tracks of the Pittsburgh, Cincinnati, Chicago & St. Louis Railway Company, the Chicago & Western Indiana Railroad Company, the Indiana Harbor Belt Railroad Company and the Baltimore & Ohio Chicago Terminal Railroad Company, where these cross each other at grade; and the plans having been examined and approved by F. G. Ewald, consulting engineer of said commission, and the commission being fully advised in the premises;

It is therefore ordered, adjudged and decreed that said addition to said interlocking plant be and the same is hereby authorized; and when said addition is completed, said petitioner shall report the same to this commission for its approval.

By order of the commission this 12th day of March, 1912, dated at Springfield, Ill.

[Signed] O. F. BERRY, *Chairman.*

BEFORE THE RAILROAD AND WAREHOUSE COMMISSION OF THE STATE OF ILLINOIS.

In the matter of the application of the Illinois Central Railroad Company for approval of plans covering certain changes in the interlocking plant at East Dubuque, Ill.

It appearing to the commission that the Illinois Central Railroad Company has made application to this commission for approval of plans covering change in the location of derail No. 24 and dwarf signal No. 19, forming a part of the interlocking plant at East Dubuque, Illinois at which point the

tracks of the Chicago, Burlington & Quincy Railroad cross at grade the main track of the Illinois Central Railroad; and the plans having been examined and approved by F. G. Ewald, consulting engineer of said commission, and the commission being fully advised in the premises;

It is therefore ordered, adjudged and decreed that the said changes to said interlocking plant be, and the same are hereby authorized; and when said changes are completed, said petitioner shall report the same to this commission for its approval.

By order of the commission this 3d day of April, 1912, dated at Springfield, Ill.

[Signed] O. F. BERRY, *Chairman*.

BEFORE THE RAILROAD AND WAREHOUSE COMMISSION OF THE STATE OF ILLINOIS.

In the matter of the application of the St. Louis, Iron Mountain & Southern Railway Company for approval of revised plans for a new interlocking plant at Dupu, Ill.

It appearing to the commission that the St. Louis, Iron Mountain & Southern Railway Company has made application to this commission for approval of plans which have been revised, covering the construction of a new interlocking plant at Dupu, Ill., at which point the main track of the East St. Louis, Columbia & Waterloo Railway crosses at grade the main tracks of the East St. Louis & Carondelet Railway and the St. Louis, Iron Mountain & Southern Railway Company; and the plans having been examined and approved by F. G. Ewald, consulting engineer of said commission, and the commission being fully advised in the premises;

It is therefore ordered, adjudged and decreed that the said St. Louis, Iron Mountain & Southern Railway Company be, and the same is hereby authorized to construct and install according to said plans, said interlocking plant; and when this interlocking plant is completed, the said petitioner shall report the same to this commission for its approval.

By order of this commission this 3d day of April, 1912, dated at Springfield, Ill.

[Signed] O. F. BERRY, *Chairman*.

BEFORE THE RAILROAD AND WAREHOUSE COMMISSION OF THE STATE OF ILLINOIS.

In the matter of the application of the Chicago & Alton Railroad Company for approval of plans covering the reconstruction of interlocking plant at Chenoa, Ill.

It appearing to the commission that the Chicago & Alton Railroad Company has made application to this commission for approval of plans covering the reconstruction of interlocking plant at Chenoa, Ill., at which point the tracks of the Chicago & Alton Railroad Company cross the tracks of the Toledo, Peoria & Western Railway Company; and the plans having been examined and approved by F. G. Ewald, consulting engineer of said commission, and the commission being fully advised in the premises;

It is therefore ordered, adjudged and decreed that the said Chicago & Alton Railroad Company be, and the same is hereby authorized to reconstruct said interlocking plant according to said plans; and when this interlocking plant is completed, said petitioner shall report the same to this commission for its approval.

By order of the commission this 3d day of April, 1912, dated at Springfield, Ill.

[Signed] O. F. BERRY, *Chairman*.

BEFORE THE RAILROAD AND WAREHOUSE COMMISSION OF THE STATE OF ILLINOIS.

In the matter of the application of the Chicago & Alton Railroad Company for approval of plans covering the construction and installation of a new interlocking plant near Quincy Junction (opposite Louisiana), Ill.

It appearing to the commission that the Chicago & Alton Railroad Company has made application to this commission for approval of plans covering the construction and installation of a new interlocking plant on the drawbridge spanning the Mississippi River near Quincy Junction (opposite Louisiana), Ill.; and the plans having been examined and approved by F. G. Ewald, consulting engineer of said commission and the commission being fully advised in the premises;

It is therefore ordered, adjudged and decreed that the said Chicago, & Alton Railroad Company be, and the same is hereby authorized to construct and install according to said plans, said interlocking plant; and when this interlocking plant is completed, said petitioner shall report the same to this commission for its approval.

By order of the commission this 10th day of April, 1912, dated at Springfield, Ill.

[Signed] O. F. BERRY, *Chairman.*

BEFORE THE RAILROAD AND WAREHOUSE COMMISSION OF THE STATE OF ILLINOIS.

In the matter of the application of the Chicago & Eastern Illinois Railroad Company for approval of plans covering the construction of two interlocking plants at Brewer, Ill.

It appearing to the commission that Chicago & Eastern Illinois Railroad Company has made application to this commission for approval of revised plans covering the construction and installation of two interlocking plants at Brewer, Ill, one of these plants to be located at the crossing where the tracks of the Chicago, Terre Haute & Southeastern Railway Company cross the tracks of the Chicago & Eastern Illinois Railroad Company, and the other plant to be located at the crossing where the tracks of the Chicago, Terre Haute & Southeastern Railway Company cross one main track of the Cleveland, Cincinnati, Chicago & St. Louis Railway Company, about thirteen hundred feet northerly from the first mentioned crossing; and the plans having been examined and approved by F. G. Ewald, consulting engineer of this commission, and the commission being fully advised in the premises;

It is therefore ordered, adjudged and decreed that the said Chicago & Eastern Illinois Railroad Company be, and the same is hereby authorized to construct and install in accordance with said plans, said two interlocking plants; and when the same are completed, said petitioner is to notify this commission for its approval.

By order of the commission this 18th day of April, 1912, dated at Springfield, Ill.

[Signed] O. F. BERRY, *Chairman.*

BEFORE THE RAILROAD AND WAREHOUSE COMMISSION OF THE STATE OF ILLINOIS.

In the matter of the Application of the Pennsylvania Company for approval of plans covering proposed changes in interlocking plant at Calumet Park.

It appearing to the commission that the Pennsylvania Company has made application to this commission for approval of plans covering certain changes in the interlocking plant at Calumet Park, (Chicago) Illinois, at which point the tracks of the South Chicago & Southern Railroad Company.

which are operated by the Pennsylvania Company, and the Baltimore & Ohio Chicago Terminal Railroad Company and the Michigan Central Railroad Company cross each other at grade; and the plans having been examined and approved by F. G. Ewald, consulting engineer of said commission, and the commission being fully advised in the premises;

It is therefore ordered, adjudged and decreed that the said changes to said interlocking plant be, and the same are hereby authorized; and when said changes are completed said petitioner shall report the same to this commission for its approval.

By order of the commission, this 19th day of April, 1912, dated at Springfield, Ill.

[Signed] O. F. BERRY, *Chairman*.

BEFORE THE RAILROAD AND WAREHOUSE COMMISSION OF THE STATE OF ILLINOIS.

No. 1058.

Railroad and Warehouse Commission

v.

Wabash Railroad Co.

St. Louis, Springfield & Peoria Railroad Co.

In the matter of protection of crossing at Iles, Ill.

Now on this day comes the respective parties hereto, as per order of the commission heretofore entered, and submits to the commission plans and specifications for an interlocking plant to be installed at Iles, county of Sangamon and State of Illinois, where the main track of the St. Louis, Springfield & Peoria Railroad Company crosses the main track of the Wabash Railroad Company at grade, and said plans and specifications having been referred to the consulting engineer of this commission, and approved by him, and it appearing that said plans and specifications are proper, and that the interlocking plant when installed according to such plans and specifications, will properly protect said crossing;

It is therefore ordered, adjudged and decreed by the commission that said plans and specifications be, and the same are hereby approved, and the said Wabash Railroad Company is hereby directed to proceed to install and build such interlocking plant within ninety days from May 1, 1912, and when so installed, to report that fact to this commission for its approval.

And it appearing to the commission that a contract has been entered into between said parties hereto as to the cost and manner of installation of said interlocking plant, and also as to its maintenance and operation;

It is therefore ordered, adjudged and decreed by the commission that such interlocking plant be installed, maintained and operated in accordance with the terms of said contract, as on file in this case, and marked Exhibit "A."

By order of the commission, this 24th day of April, 1912, dated at Springfield, Ill.

[Signed] O. F. BERRY, *Chairman*;

B. A. ECKHART, *Commissioner*;

J. A. WILLOUGHBY, *Commissioner*.

BEFORE THE RAILROAD AND WAREHOUSE COMMISSION OF THE STATE OF ILLINOIS.

In the matter of application of the Wabash Railroad Company for approval of plans covering the reconstruction of interlocking plant at Winston, Ill.

It appearing to the commission that the Wabash Railroad Company has made application to this commission for approval of plans covering the reconstruction of the tower and the machine installed therein, which was

destroyed by fire, and forming a part of the interlocking plant at Winston, Ill., at which point the tracks of the Wabash Railroad Company and the Illinois Central Railroad Company cross at grade the main track of the Chicago, Burlington & Quincy Railroad Company; and the plans having been examined and approved by F. G. Ewald, consulting engineer of said commission, and the commission being fully advised in the premises.

It is therefore ordered, adjudged and decreed that the said Wabash Railroad Company be, and the same is hereby authorized to reconstruct said interlocking plant according to said plans; and when same is completed, said petitioner shall report to this commission for its approval.

By order of the commission, this 1st day of May, 1912, dated at Springfield, Ill.

[Signed] O. F. BERRY, *Chairman.*

BEFORE THE RAILROAD AND WAREHOUSE COMMISSION OF THE STATE OF ILLINOIS.

In the matter of application of the Illinois Central Railroad Company for approval of plans covering certain changes in the interlocking plant at Coulterville, Ill.

It appearing to the commission that the Illinois Central Railroad Company has made application to this commission for approval of plans covering certain changes in the interlocking plant at Coulterville, at which point the tracks of the Illinois Central Railroad Company cross, at grade, the main track of the Illinois Southern Railway Company; and the plans having been examined and approved by F. G. Ewald, consulting engineer of said commission, and the commission being fully advised in the premises.

It is therefore ordered, adjudged and decreed that said changes to said interlocking plant be, and the same are hereby authorized; and when said changes are completed, said petitioner shall report same to this commission for its approval.

By order of the commission, this 1st day of May, 1912, dated at Springfield, Ill.

[Signed] O. F. BERRY, *Chairman.*

BEFORE THE RAILROAD AND WAREHOUSE COMMISSION OF THE STATE OF ILLINOIS.

In the matter of the application of the Cleveland, Cincinnati, Chicago & St. Louis Railway Company for approval of plans covering changes in interlocking plant at Pana, Ill.

It appearing to the commission that the Cleveland, Cincinnati, Chicago & St. Louis Railway Company has made application to this commission for approval of plans covering certain changes in the interlocking plant at Pana, Ill.; and the plans having been examined and approved by F. G. Ewald, consulting engineer of said commission, and the commission being fully advised in the premises.

It is therefore ordered, adjudged and decreed that said changes in said interlocking plant be, and the same are hereby authorized; and when such changes are completed, the petitioner shall report to this commission for its approval.

By order of the commission, this 14th day of May, 1912, dated at Springfield, Ill.

[Signed] O. F. BERRY, *Chairman.*

BEFORE THE RAILROAD AND WAREHOUSE COMMISSION OF THE STATE OF ILLINOIS.

In the matter of the application of the Chicago, Milwaukee & St. Paul Railway Company for approval of plans covering certain additions and changes to the interlocking plant at Rondout, Ill.

It appearing to the commission that the Chicago, Milwaukee & St. Paul Railway Company has made application to this commission for approval of plans covering certain changes and additions to the interlocking plant at Rondout, Ill., at which point the tracks of the Chicago, Milwaukee & St. Paul Railway Company cross at grade the tracks of the Elgin, Joliet & Eastern Railway Company, and it appearing that said changes and additions consist of the installation of detector circuit electric interlocking and some changes in the mechanical locking made necessary by the installation of the electric locking; and the plans having been examined and approved by F. G. Ewald, consulting engineer of this commission, and the commission being fully advised in the premises.

It is therefore ordered, adjudged and decreed that said changes and additions to said interlocking plant be, and the same are hereby authorized; and when said changes and additions are completed, said petitioner shall report the same to this commission for its approval.

By order of the commission, this 15th day of May, 1912, dated at Springfield, Ill.

[Signed] O. F. BERRY, *Chairman.*

BEFORE THE RAILROAD AND WAREHOUSE COMMISSION OF THE STATE OF ILLINOIS.

In the matter of the application of the Illinois Central Railroad Company for approval of plans covering certain changes in the interlocking plant at Otto, Ill.

It appearing to the commission that the Illinois Central Railroad Company has made application to this commission for approval of plans covering certain changes in the interlocking plant at Otto, Ill.; and the plans having been examined and approved by F. G. Ewald, consulting engineer of said commission, and the commission being fully advised in the premises.

It is therefore ordered, adjudged and decreed that said changes in said interlocking plant be, and the same are hereby authorized; and when said changes are completed, the petitioner shall report the same to this commission for its approval.

By order of the commission, this 16th day of May, 1912, dated at Springfield, Ill.

[Signed] O. F. BERRY, *Chairman.*

BEFORE THE RAILROAD AND WAREHOUSE COMMISSION OF THE STATE OF ILLINOIS.

In the matter of the application of the Illinois Central Railroad Company for approval of plans covering certain changes in the interlocking plant at Kankakee Bridge, Ill.

It appearing to the commission that the Illinois Central Railroad Company has made application to this commission for approval of plans covering certain changes in the interlocking plant at Kankakee Bridge, Ill.; and the plans having been examined and approved by F. G. Ewald, consulting engineer of this commission, and the commission being fully advised in the premises.

It is therefore ordered, adjudged and decreed that said changes be, and the same are hereby authorized; and when said changes in said interlocking plant are completed, the petitioner shall report the same to this commission for its approval.

By order of the commission, this 16th day of May, 1912, dated at Springfield, Ill.

[Signed] O. F. BERRY, *Chairman.*

BEFORE THE RAILROAD AND WAREHOUSE COMMISSION OF THE STATE OF ILLINOIS.

In the matter of the application of the Illinois Central Railroad Company for approval of plans covering certain changes in the interlocking plant at Portage, Ill.

It appearing to the commission that the Illinois Central Railroad Company has made application to this commission for approval of plans covering certain changes in the signaling arrangement of the interlocking plant at Portage, at which point the tracks of the Chicago, Burlington & Quincy Railroad Company form a junction with the tracks of the Illinois Central Railroad Company; and the plans having been examined and approved by F. G. Ewald, consulting engineer of said commission, and the commission being fully advised in the premises.

It is therefore ordered, adjudged and decreed that said changes to said interlocking plant be, and the same are hereby authorized; and when said changes are completed, said petitioner shall report the same to the commission for its approval.

By order of the commission, this 11th day of June, 1912, dated at Springfield, Ill.

[Signed] O. F. BERRY, *Chairman.*

BEFORE THE RAILROAD AND WAREHOUSE COMMISSION OF THE STATE OF ILLINOIS.

In the matter of the application of the Illinois Central Railroad Company for approval of plans covering the reconstruction of the interlocking plant at Gilman, Ill.

It appearing to the commission that the Illinois Central Railroad Company has made application to this commission for the approval of plans covering the reconstruction and some changes and additions to the interlocking plant at Gilman, Ill., at which point the tracks of the Toledo, Peoria & Western Railway cross the tracks of the Illinois Central Railroad Company; and the plans having been examined and approved by F. G. Ewald, consulting engineer of said commission, and the commission being fully advised in the premises.

It is therefore ordered, adjudged and decreed that the reconstruction of said interlocking plant, together with certain changes and additions to same be, and the same is hereby authorized; and when all of said changes and additions are completed, said petitioner shall report the same to this commission for its approval.

By order of the commission, this 11th day of June, 1912, dated at Springfield, Ill.

[Signed] O. F. BERRY, *Chairman.*

BEFORE THE RAILROAD AND WAREHOUSE COMMISSION OF THE STATE OF ILLINOIS.

In the matter of the application of the St. Louis Merchants Bridge Terminal Railway Company for approval of plans covering certain changes and additions to the interlocking plant at Granite City, Ill.

It appearing to the commission that the St. Louis Merchants Bridge Terminal Railway Company has made application to this commission for approval of plans covering certain changes and additions to the interlocking plant at Granite City, Ill., at which point the tracks of the Chicago & Alton Railroad Company, the Cleveland, Cincinnati, Chicago & St. Louis Railway Company and the Wabash Railroad Company are crossed at grade by the tracks of the St. Louis Merchants Bridge Terminal Railway Company, the tracks of the latter company also form a junction with the tracks of the Chicago, Peoria & St. Louis Railway Company of Illinois; and the plans having been examined and approved by F. G. Ewald, consulting engineer of said commission, and the commission being fully advised in the premises.

It is therefore ordered, adjudged and decreed that the said changes and additions to said interlocking plant be, and the same are hereby authorized; and when said changes and additions are completed, said petitioner shall report the same to this commission for its approval.

By order of the commission, this 11th day of June, 1912, dated at Springfield, Ill.

[Signed] O. F. BERRY, *Chairman.*

BEFORE THE RAILROAD AND WAREHOUSE COMMISSION OF THE STATE OF ILLINOIS.

In the matter of the application of the Chicago & Alton Railroad Company for approval of plans covering construction of a new interlocking plant at Corwith, Ill.

It appearing to the commission that the Chicago & Alton Railroad Company has made application to this commission for the approval of plans covering the construction of a new interlocking plant at Corwith, Ill., at which point the tracks of the Atchison, Topeka & Santa Fe Railway Company cross their two main tracks and two main tracks of the Chicago & Alton Railroad Company; and the plans having been examined and approved by F. G. Ewald, consulting engineer of said commission, and the commission being fully advised in the premises.

It is therefore ordered, adjudged and decreed that the said Chicago & Alton Railroad Company be, and the same is hereby authorized to construct and install according to said plans, said interlocking plant; and when this interlocking plant is completed, said petitioner shall report the same to this commission for its approval.

By order of the commission, this 19th day of June, 1912, dated at Springfield, Ill.

[Signed] O. F. BERRY, *Chairman.*

BEFORE THE RAILROAD AND WAREHOUSE COMMISSION OF THE STATE OF ILLINOIS.

In the matter of the application of the Chicago & Alton Railroad Company for approval of revised plans covering the reconstruction of the interlocking plant at Girard, Ill.

It appearing to the commission that the Chicago & Alton Railroad Company has made application to this commission for approval of revised plans for the reconstruction of the interlocking plant at Girard, Ill., at which point the main track of the Chicago, Burlington & Quincy Railroad Company

crosses the tracks of the Chicago & Alton Railroad Company; and the plans having been examined and approved by F. G. Ewald, consulting engineer of said commission, and the commission being fully advised in the premises;

It is therefore ordered, adjudged and decreed that the said Chicago & Alton Railroad Company be, and the same is hereby authorized to reconstruct said interlocking plant according to said plans; and when same is completed, said petitioner shall report the same to this commission for its approval.

By order of the commission, this 19th day of June, 1912, dated at Springfield, Ill.

[Signed] O. F. BERRY, *Chairman.*

BEFORE THE RAILROAD AND WAREHOUSE COMMISSION OF THE STATE OF ILLINOIS.

In the matter of the application of the Lake Shore & Michigan Southern Railway Company for approval of plans covering certain changes and additions to the interlocking plant located at the Calumet River, Chicago, Ill.

It appearing to the commission that the Lake Shore & Michigan Southern Railway Company has made application to this commission for approval of plans covering certain changes and additions to the interlocking plant located at the Calumet River, Chicago, Ill.; and it appearing that said changes and additions are for a temporary arrangement in order to permit trains of the Pennsylvania Lines to cross the present low level bridge of the Lake Shore & Michigan Southern Railway Company, pending the construction of a new high level bridge by the Pennsylvania Company; and the plans having been explained and approved by F. G. Ewald, consulting engineer of said commission, and the commission being fully advised in the premises;

It is therefore ordered, adjudged and decreed that said changes and additions to said interlocking plant be and the same are hereby authorized; and when said changes and additions are completed, said petitioner shall report the same to this commission for its approval.

By order of the commission, this 19th day of June, 1912, dated at Springfield, Ill.

[Signed] O. F. BERRY, *Chairman.*

BEFORE THE RAILROAD AND WAREHOUSE COMMISSION OF THE STATE OF ILLINOIS.

In the matter of the application of the Baltimore & Ohio Southwestern Railroad Company for approval of plans covering the reconstruction of the interlocking plant at Sandoval, Ill.

It appearing to the commission that the Baltimore & Ohio Southwestern Railroad Company has made application to this commission for approval of plans covering the reconstruction of the interlocking plant at Sandoval, Ill., at which point the main track of the Baltimore & Ohio Southwestern Railroad Company crosses the main track of the Illinois Central Railroad Company; and the plans having been examined and approved, as amended with respect to location of derails, by F. G. Ewald, consulting engineer of said commission, and the commission being fully advised in the premises;

It is therefore ordered, adjudged and decreed that the said Baltimore & Ohio Southwestern Railroad Company be, and the same is hereby authorized to reconstruct said interlocking plant according to said plans; and when the same is completed, said petitioner shall report to this commission for its approval.

By order of the commission, this 19th day of June, 1912, dated at Springfield, Ill.

[Signed] O. F. BERRY, *Chairman.*

BEFORE THE RAILROAD AND WAREHOUSE COMMISSION OF THE STATE OF ILLINOIS.

In the matter of the application of the Lake Shore & Michigan Southern Railway Company for approval of plans covering the construction of a new interlocking plant at Brookline Station in the city of Chicago, Ill.

It appearing to the commission that the Lake Shore & Michigan Southern Railway Company has made application to this commission for approval of plans covering the construction of a new interlocking plant at Brookline Station in the city of Chicago, Ill.; at which point is a junction of the tracks of the Lake Shore & Michigan Southern Railway Company with the tracks of the New York, Chicago & St. Louis Railway Company; and the plans having been examined and approved by F. G. Ewald, consulting engineer of said commission, and the commission being fully advised in the premises;

It is therefore ordered, adjudged and decreed that the said Lake Shore & Michigan Southern Railway Company be, and the same is hereby authorized to construct and install according to said plans, said interlocking plant; when this interlocking plant is completed, said petitioner shall report the same to this commission for its approval.

By order of the commission, this 19th day of June, 1912, dated at Springfield, Ill.

[Signed] O. F. BERRY, *Chairman.*

BEFORE THE RAILROAD AND WAREHOUSE COMMISSION OF THE STATE OF ILLINOIS.

In the matter of the application of the Illinois Central Railroad Company for approval of plans covering changes and additions to the interlocking plant at Riverdale, Ill.

It appearing to the commission that the Illinois Central Railroad Company has made application to this commission for approval of plans covering certain changes and additions to the interlocking plant at Riverdale, Ill., at which point the tracks of the Illinois Central Railroad Company, the Pittsburg, Cincinnati, Chicago & St. Louis Railway Company and the Baltimore & Ohio Chicago Terminal Railroad Company cross each other at grade; and the plans having been examined and approved by F. G. Ewald, consulting engineer of said commission, and the commission being fully advised in the premises;

It is therefore ordered, adjudged and decreed that said changes and additions to said interlocking plant be, and the same are hereby authorized; and when said changes and additions are completed, said petitioner shall report the same to this commission for its approval.

By order of the commission, this 25th day of June, 1912, dated at Springfield, Ill.

[Signed] O. F. BERRY, *Chairman.*

BEFORE THE RAILROAD AND WAREHOUSE COMMISSION OF THE STATE OF ILLINOIS.

In the matter of the application of the St. Louis Merchants Bridge Terminal Railway Company for approval of plans covering changes and additions to the interlocking plant at Madison, Ill.

It appearing to the commission that the St. Louis Merchants Bridge Terminal Railway Company has made application to this commission for approval of plans covering certain changes and additions to the interlocking plant at Madison, Ill., at which point the tracks of the St. Louis Merchants Bridge Terminal Railway Company form junctions and cross each other

at grade; and the plans having been examined and approved by F. G. Ewald, consulting engineer of said commission and the commission being fully advised in the premises;

It is therefore ordered, adjudged and decreed that the said changes and additions to said interlocking plant be, and the same are hereby authorized; and when said changes and additions are completed, said petitioner shall report the same to this commission for its approval.

By order of the commission, this 9th day of July, 1912, dated at Springfield, Ill.

[Signed] O. F. BERRY, *Chairman.*

BEFORE THE RAILROAD AND WAREHOUSE COMMISSION OF THE STATE OF ILLINOIS.

In the matter of the application of the Illinois Central Railroad Company for approval of plans covering certain changes in the signaling arrangement of interlocking plant at Galena, Ill.

It appearing to the commission that the Illinois Central Railroad Company has made application to this commission for approval of plans covering certain changes in the signaling arrangement of the interlocking plant at Galena, Illinois, at which point the main track of the Illinois Central Railroad Company crosses a drawbridge spanning the Galena River and the main track of the Chicago, Burlington & Quincy Railroad Company; and the plans having been examined and approved by F. G. Ewald, consulting engineer of said commission, and the commission being fully advised in the premises;

It is therefore ordered, adjudged and decreed that said changes in said interlocking plant be, and the same are hereby authorized; and when said changes are completed, said petitioner shall report the same to this commission for its approval.

By order of the commission, this 9th day of July, 1912, dated at Springfield, Ill.

[Signed] O. F. BERRY, *Chairman.*

BEFORE THE RAILROAD AND WAREHOUSE COMMISSION OF THE STATE OF ILLINOIS.

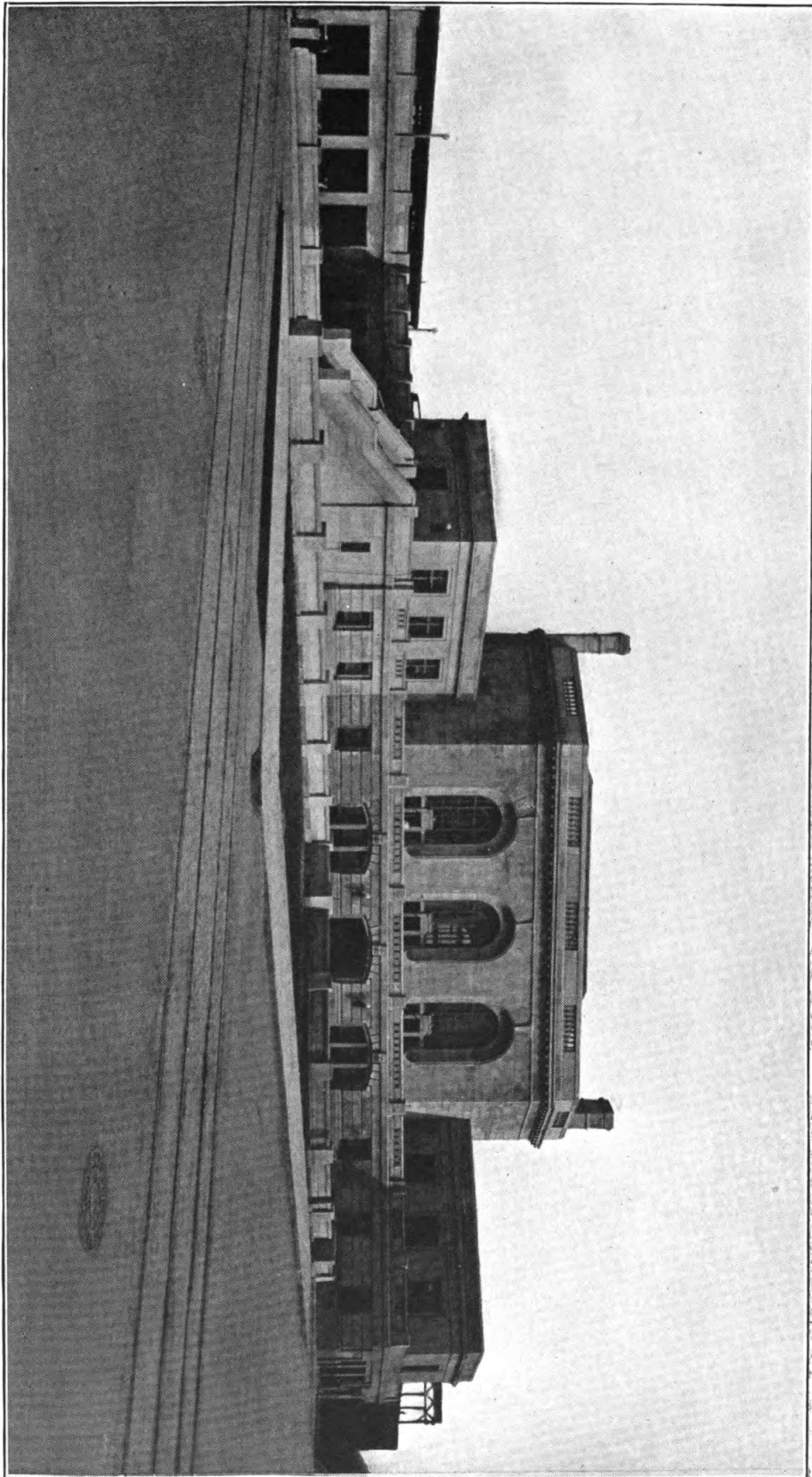
In the matter of the application of the Chicago & Northwestern Railway Company for approval of plans covering certain changes in the interlocking plant at Fulton, Ill., known as Fulton No. 1.

It appearing to the commission that the Chicago & Northwestern Railway Company has made application to this commission for approval of plans covering certain changes in the interlocking plant at Fulton, Ill., known as Fulton No. 1, at which point the tracks of the Chicago & Northwestern Railway Company are crossed at grade by the Chicago, Burlington & Quincy Railroad Company; and the plans having been examined and approved by F. G. Ewald, consulting engineer of said commission, and the commission being fully advised in the premises;

It is therefore ordered and decreed by the commission that said changes in said interlocking plant be, and the same are hereby authorized; and when said changes are completed, said petitioner shall report the same to this commission for its approval.

By order of the commission, this 16th day of July, 1912, dated at Springfield, Ill.

[Signed] O. F. BERRY, *Chairman.*



BEFORE THE RAILROAD AND WAREHOUSE COMMISSION OF THE STATE OF ILLINOIS.

In the matter of the application of the Illinois Central Railroad Company for approval of plans covering certain changes and additions to the interlocking plant at Kankakee Junction, Ill.

It appearing to the commission that the Illinois Central Railroad Company has made application to this commission for approval of plans covering certain changes and additions to the interlocking plant at Kankakee Junction, Ill., at which point the tracks of the Chicago, Indiana & Southern Railroad Company and the Cleveland, Cincinnati, Chicago & St. Louis Railway Company cross at grade the main tracks of the Illinois Central Railroad Company; and the plans having been examined and approved by F. G. Ewald, consulting engineer of said commission, and the commission being fully advised in the premises;

It is therefore ordered, adjudged and decreed that the said changes and additions to said interlocking plant be, and the same are hereby authorized; and when said changes and additions are completed, said petitioner shall report the same to this commission for its approval.

By order of the commission, this 16th day of July, 1912, dated at Springfield, Ill.

[Signed] O. F. BERRY, *Chairman.*

BEFORE THE RAILROAD AND WAREHOUSE COMMISSION OF THE STATE OF ILLINOIS.

In the matter of the application of the Chicago, Milwaukee & St. Paul Railway Company for approval of plans covering certain changes in the interlocking arrangements at Byron, Ill.

It appearing to the commission that the Chicago, Milwaukee & St. Paul Railway Company has made application to this commission for approval of plans covering changes in the signaling arrangement at Byron, Ill., and along the tracks of the petitioning road; it further appearing that these changes are made necessary by the construction of three-position upper quadrant block signals which are being installed by the petitioning road between Elgin and Savanna, said block signals to be operated by means of alternating current; it further appearing that at this point the tracks of the Chicago, Milwaukee & St. Paul Railway Company cross at grade the tracks of the Chicago Great Western Railroad Company, and the plans having been examined and approved by F. G. Ewald, consulting engineer of said commission, and the commission being fully advised in the premises;

It is therefore ordered, adjudged and decreed that said changes in said interlocking arrangements at this point be, and the same are hereby authorized; and when said changes are completed, said petitioner shall report the same to this commission for its approval.

By order of the commission, this 16th day of July, 1912, dated at Springfield, Ill.

[Signed] O. F. BERRY, *Chairman.*

BEFORE THE RAILROAD AND WAREHOUSE COMMISSION OF THE STATE OF ILLINOIS.

In the matter of the application of the Chicago, Milwaukee & St. Paul Railway Company for approval of plans covering certain changes in the interlocking arrangements at Ashdale, Ill.

It appearing to the commission that the Chicago, Milwaukee & St. Paul Railway Company has made application to this commission for approval of plans covering certain changes in the signaling arrangement at Ashdale, Ill., and along the tracks of the petitioning road; it further appearing that

these changes are made necessary by the construction of three-position upper quadrant block signals which are being installed by the petitioning road between Elgin and Savanna, said block signals to be operated by alternating current; it further appearing that at this point the main tracks of the Chicago & Council Bluffs division and the main track of the Kansas City division of the Chicago, Milwaukee & St. Paul Railway Company form junctions with each other, and the plans having been examined and approved by F. G. Ewald, consulting engineer of said commission and the commission being fully advised in the premises;

It is therefore ordered, adjudged and decreed that said changes in said interlocking arrangements be, and the same are hereby authorized; and when said changes are completed, said petitioner shall report the same to this commission for its approval.

By order of the commission, this 16th day of July, 1912, dated at Springfield, Ill.

[Signed] O. F. BERRY, *Chairman.*

BEFORE THE RAILROAD AND WAREHOUSE COMMISSION OF THE STATE OF ILLINOIS.

In the matter of the application of the Chicago, Milwaukee & St. Paul Railway Company for approval of plans covering changes in the interlocking arrangement at Kittredge, Ill.

It appearing to the commission that the Chicago, Milwaukee & St. Paul Railway Company has made application to this commission for approval of plans covering certain changes in the signaling arrangement at Kittredge, Ill., and along the tracks of the petitioning road; it further appearing that these changes are made necessary by the construction of three-position upper quadrant block signals which are being installed by the petitioning road between Elgin and Savanna; it further appearing that at this point the main tracks of the Chicago & Council Bluffs division and Racine & Southwestern division of the Chicago, Milwaukee & St. Paul Railway Company form junctions with each other, and the plans having been examined and approved by F. G. Ewald, consulting engineer of said commission, and the commission being fully advised in the premises;

It is therefore ordered, adjudged and decreed that said changes in said interlocking arrangements at this point be, and the same are hereby authorized; and when said changes are completed, said petitioner shall report the same to this commission for its approval.

By order of the commission, this 16th day of July, 1912, dated at Springfield, Ill.

[Signed] O. F. BERRY, *Chairman.*

BEFORE THE RAILROAD AND WAREHOUSE COMMISSION OF THE STATE OF ILLINOIS.

In the matter of the application of the Chicago, Milwaukee & St. Paul Railway Company for approval of plans covering certain changes in the interlocking arrangements at Kingston, Ill.

It appearing to the commission that the Chicago, Milwaukee & St. Paul Railway Company has made application to this commission for approval of plans covering changes in the signaling arrangements at Kingston, Ill., and along the tracks of the petitioning road; it further appearing that these changes are made necessary by the construction of three-position upper quadrant block signals which are being installed by the petitioning road between Elgin and Savanna, said block signals to be operated by means of alternating current; it further appearing that at this point the tracks of the Chicago, Milwaukee & St. Paul Railway Company cross at grade the

tracks of the Chicago & Northwestern Railway Company, and the plans having been examined and approved by F. G. Ewald, consulting engineer of said commission, and the commission being fully advised in the premises;

It is therefore ordered, adjudged and decreed that said changes in said interlocking arrangements at this point be, and the same are hereby authorized; and when said changes are completed, said petitioner shall report the same to this commission for its approval.

By order of the commission this 16th day of July, 1912, dated at Springfield, Ill.

[Signed] O. F. BERRY, *Chairman.*

BEFORE THE RAILROAD AND WAREHOUSE COMMISSION OF THE STATE OF ILLINOIS.

In the matter of the application of the Illinois Central Railroad Company for approval of plans covering certain changes and additions to the interlocking plant at Champaign, Ill.

It appearing to the commission that the Illinois Central Railroad Company has made application to this commission for approval of plans covering certain changes and additions to the interlocking plant at Champaign, Ill., at which point the main track of the Wabash Railroad Company and the Cleveland, Cincinnati, Chicago & St. Louis Railway Company cross the main tracks of the Illinois Central Railroad Company at grade; and the plans having been examined and approved by F. G. Ewald, consulting engineer of said commission, and the commission being fully advised in the premises;

It is therefore ordered, adjudged and decreed that said changes and additions to said interlocking plant be, and the same is hereby authorized; and when said changes and additions are completed, said petitioner shall report the same to this commission for its approval.

By order of the commission, this 16th day of July, 1912, dated at Springfield, Ill.

[Signed] O. F. BERRY, *Chairman.*

BEFORE THE RAILROAD AND WAREHOUSE COMMISSION OF THE STATE OF ILLINOIS.

In the matter of the application of the Chicago & Northwestern Railway Company for approval of plans covering the construction of proposed interlocking plant at Valley (Northfield), Ill.

It appearing to the commission that the Chicago & Northwestern Railway Company has made application to this commission for approval of plans covering the construction of proposed new interlocking plant at Valley, (Northfield) Ill. at which point a junction is formed of the tracks of the Des Plaines Valley Railway Company with the tracks of the Wisconsin division of the Chicago & Northwestern Railway Company; and the plans having been examined and approved by F. G. Ewald, consulting engineer of said commission, and the commission being fully advised in the premises;

It is therefore ordered, adjudged and decreed that the said Chicago & Northwestern Railway Company be and the same is hereby authorized to construct and install according to said plans, said interlocking plant; and when same is completed, said petitioner shall report the same to this commission for its approval.

By order of the commission, this 25th day of July, 1912, dated at Springfield, Ill.

[Signed] O. F. BERRY, *Chairman.*

BEFORE THE RAILROAD AND WAREHOUSE COMMISSION OF THE STATE OF ILLINOIS.

In the matter of the application of the St. Louis, Peoria & Northwestern Railway Company for approval of plans covering the construction of a new interlocking plant at Athens, Ill.

It appearing to the commission that the St. Louis, Peoria & Northwestern Railway Company has made application to this commission for approval of plans covering the construction and installation of a new interlocking plant at Athens, Ill., at which point the tracks of the St. Louis, Peoria & Northwestern Railway Company cross at grade the tracks of the Chicago, Peoria & St. Louis Railway Company of Illinois; and the plans having been examined and approved by F. G. Ewald, consulting engineer of said commission, and the commission being fully advised in the premises;

It is therefore ordered, adjudged and decreed by the commission that the said St. Louis, Peoria & Northwestern Railway Company be, and the same is hereby authorized to construct and install said interlocking plant according to said plans; and when said interlocking plant is completed, said petitioner shall report the same to this commission for its approval.

By order of the commission this 27th day of August, 1912, dated at Springfield, Ill.

[Signed] O. F. BERRY, *Chairman.*

BEFORE THE RAILROAD AND WAREHOUSE COMMISSION OF THE STATE OF ILLINOIS.

In the matter of the application of the Chicago & Northwestern Railway Company for approval of plans covering changes in the interlocking plant at Harvard, Ill.

It appearing to the commission that the Chicago & Northwestern Railway Company has made application to this commission for the approval of plans covering changes in the interlocking plant at Harvard, Ill., at which point the two lines of the Chicago & Northwestern Railway Company form a junction; and the plans having been examined and approved by F. G. Ewald, consulting engineer of said commission, and the commission being fully advised in the premises;

It is therefore ordered, adjudged and decreed that said changes in said interlocking plant be, and the same are hereby authorized; and when said changes are completed, said petitioner shall report the same to this commission for its approval.

By order of the commission this 27th day of August, 1912, dated at Springfield, Ill.

[Signed] O. F. BERRY, *Chairman.*

BEFORE THE RAILROAD AND WAREHOUSE COMMISSION OF THE STATE OF ILLINOIS.

In the matter of the application of the Vandalia Railroad Company for approval of plans covering an addition to the interlocking plant at Smithboro, Ill.

It appearing to the commission that the Vandalia Railroad Company has made application to this commission for approval of plans covering an addition to the interlocking plant at Smithboro, Ill., at which point the tracks of the Vandalia Railroad Company cross at grade the tracks of the Chicago, Burlington & Quincy Railroad Company; and the plans having been examined and approved by F. G. Ewald, consulting engineer of said commission, and the commission being fully advised in the premises;

It is therefore ordered, adjudged and decreed by the commission that the said addition to said interlocking plant be, and the same is hereby authorized; and when said addition is completed, said petitioner shall report the same to this commission for its approval.

By order of the commission this 27th day of August, 1912, dated at Springfield, Ill.

[Signed] O. F. BERRY, *Chairman*.

BEFORE THE RAILROAD AND WAREHOUSE COMMISSION OF THE STATE OF ILLINOIS.

In the matter of the application of the St. Louis, Peoria & Northwestern Railway Company for approval of plans covering proposed enlargement of the interlocking plant at Hollis, Ill.

It appearing to the commission that the St. Louis, Peoria & Northwestern Railway Company has made application to this commission for approval of plans covering the proposed enlargement of the interlocking plant at Hollis, Ill., at which point, when finally completed, the main track of the St. Louis, Peoria & Northwestern Railway Company will cross the main track of the Peoria Railway Terminal Company and a track of the Peoria and Pekin Union Railway Company; it will also include the crossing of the main track of the Toledo, Peoria and Western Railway Company with the main track of the Peoria Railway Terminal Company and a junction of said main track on the Toledo, Peoria and Western Railway Company with the main track of the Peoria and Pekin Union Railway Company; and the plans having been examined and approved by F. G. Ewald, consulting engineer of said commission, and the commission being fully advised in the premises;

It is therefore ordered, adjudged and decreed by the commission that the said interlocking plant be enlarged according to said plans; and when said interlocking plant is completed, said petitioner shall report the same to this commission for its approval.

By order of the commission this 27th day of August, 1912, dated at Springfield, Ill.

[Signed] O. F. BERRY, *Chairman*.

BEFORE THE RAILROAD AND WAREHOUSE COMMISSION OF THE STATE OF ILLINOIS.

In the matter of the application of the Chicago & Northwestern Railway Company for approval of plans covering a new interlocking plant to be constructed near Mason City, Ill.

It appearing to the commission that the Chicago & Northwestern Railway Company has made application to this commission for approval of plans covering a new interlocking plant to be constructed and installed near Mason City, Ill., where the main track of the St. Louis, Peoria & Northwestern Railway Company crosses at grade the main track of the Illinois Central Railroad Company; and the plans having been examined and approved by F. G. Ewald, consulting engineer of this commission, and the commission being fully alvised in the premises;

It is therefore ordered, adjudged and decreed by the commission that the said Chicago & Northwestern Railway Company be, and the same is hereby authorized to construct and install said interlocking plant according to said plans; and when said interlocking plant is completed, said petitioner shall report the same to this commission for its approval.

By order of the commission, this 27th day of August, 1912, dated at Springfield, Ill.

[Signed] O. F. BERRY, *Chairman*

BEFORE THE RAILROAD AND WAREHOUSE COMMISSION OF THE STATE OF ILLINOIS.

In the matter of the application of the Chicago & Western Indiana Railroad Company for approval of certain changes and additions to the interlocking plant known as tower "A," at 15th and Dearborn streets, Chicago, Ill.

It appearing to the commission that the Chicago & Western Indiana Railroad Company has made application to this commission for approval of plans covering certain changes and additions to the interlocking plant, known as tower "A," located at 15th and Dearborn streets, Chicago, Ill., at which point a junction is formed by the tracks of the Chicago & Western Indiana Railroad Company with the tracks of the Atchison, Topeka & Santa Fe Railway Company and the Chicago & Eastern Illinois Railroad Company; and the plans having been examined and approved by F. G. Ewald, consulting engineer of said commission, and the commission being fully advised in the premises;

It is therefore ordered, adjudged and decreed that the said changes and additions to said interlocking plant, be and the same are hereby authorized; when said changes and additions are completed, said petitioner shall report the same to this commission for its approval.

By order of the commission this 2d day of October, 1912, dated at Springfield, Ill.

[Signed] O. F. BERRY, *Chairman.*

BEFORE THE RAILROAD AND WAREHOUSE COMMISSION OF THE STATE OF ILLINOIS.

In the matter of the application of the St. Louis, Iron Mountain & Southern Railway Company for approval of plans covering certain changes and additions to the interlocking plant at Howardton, Ill.

It appearing to the commission that the St. Louis, Iron Mountain & Southern Railway Company has made application to this commission for approval of plans covering certain changes and additions to the interlocking plant at Howardton, Ill., at which point a junction is formed by the two main tracks of the St. Louis, Iron Mountain & Southern Railway Company; and it appearing that said changes and additions consist of the introduction of the block signal which is to be interlocked; and the plans having been examined and approved by F. G. Ewald, consulting engineer, of said commission, and the commission being fully advised in the premises;

It is therefore ordered, adjudged and decreed that the said changes and additions to said interlocking plant be, and the same is hereby authorized; and when said changes and additions are completed, said petitioner shall report the same to this commission for its approval.

By order of the commission this 2d day of October, 1912, dated at Springfield, Ill.

[Signed] O. F. BERRY, *Chairman.*

BEFORE THE RAILROAD AND WAREHOUSE COMMISSION OF THE STATE OF ILLINOIS.

In the matter of the application of the St. Louis, Iron Mountain & Southern Railway Company for approval of plans covering changes and additions to the interlocking plant at Halsey, Ill.

It appearing to the commission that the St. Louis, Iron Mountain & Southern Railway Company has made application to this commission for approval of plans covering certain changes and additions to the interlocking plant at Halsey, at which point a junction is formed by the two main tracks of the St. Louis, Iron Mountain & Southern Railway Company; and it appearing that the said changes and additions consist of the introduction of the

block signal which is to be interlocked; and the plans having been examined and approved by F. G. Ewald, consulting engineer of said commission, and the commission being fully advised in the premises;

It is therefore ordered, adjudged and decreed that the said changes and additions to said interlocking plant be, and the same are hereby authorized; and when said changes and additions are completed, said petitioner shall report the same to this commission for its approval.

By order of the commission this 2d day of October, 1912, dated at Springfield, Ill.

[Signed] O. F. BERRY, *Chairman.*

BEFORE THE RAILROAD AND WAREHOUSE COMMISSION OF THE STATE OF ILLINOIS.

In the matter of the application of the Chicago & Western Indiana Railroad Company for approval of plans covering certain changes and additions to the interlocking plant known as tower "B," at 16th and Grove streets, Chicago, Ill.

It appearing to the commission that the Chicago & Western Indiana Railroad Company has made application to this commission for approval of plans covering certain changes and additions to the interlocking plant known as tower "B," at 16th and Grove streets, Chicago, Ill., at which point the tracks of the Chicago & Western Indiana Railroad Company for a junction with each other and include also several track connections; and the plans having been examined and approved by F. G. Ewald, consulting engineer of said commission, and the commission being fully advised in the premises;

It is therefore ordered, adjudged and decreed that the said changes and additions to said interlocking plant be, and the same are hereby authorized; and when said changes and additions are completed, said petitioner shall report the same to this commission for its approval.

By order of the commission this 2d day of October, 1912, dated at Springfield, Ill.

[Signed] O. F. BERRY, *Chairman.*

BEFORE THE RAILROAD AND WAREHOUSE COMMISSION OF THE STATE OF ILLINOIS.

In the matter of application of the St. Louis, Iron Mountain & Southern Railway Company for approval of plans covering changes and additions to the interlocking plant at Roots, Ill.

It appearing to the commission that the St. Louis, Iron Mountain & Southern Railway Company has made application to this commission for approval of plans covering certain changes and additions to the interlocking plant at Roots, Ill., at which point the two main tracks of the St. Louis, Iron Mountain & Southern Railway Company form a junction; and the plans having been examined and approved by F. G. Ewald, consulting engineer of said commission, and the commission being fully advised in the premises;

It is therefore ordered, adjudged and decreed that said changes and additions to said interlocking plant be, and the same are hereby authorized; and when said changes and additions are completed, said petitioner shall report the same to this commission for its approval.

By order of the commission, this 8th day of October, 1912, dated at Springfield, Ill.

[Signed] O. F. BERRY, *Chairman.*

BEFORE THE RAILROAD AND WAREHOUSE COMMISSION OF THE STATE OF ILLINOIS.

In the matter of the application of the Pennsylvania Company for approval of plans covering certain changes and additions to the interlocking plant at Burham, Ill.

It appearing to the commission that the Pennsylvania Company has made application of this commission for approval of plans covering certain changes and additions to the interlocking plant at Burham, Ill., at which point the main track operated by the Pennsylvania Company (South Chicago & Southern Railroad Company), crosses the main track of the Chicago & Western Indiana Railroad Company and the New York, Chicago & St. Louis Railroad Company; and the plans having been examined and approved by F. G. Ewald, consulting engineer of said commission, and the commission being fully advised in the premises;

It is therefore ordered, adjudged and decreed that the said changes and additions to said interlocking plant be, and the same are hereby authorized; and when said changes and additions are completed, the said petitioner shall report the same to this commission for its approval.

By order of the commission this 15th day of October, 1912, dated at Springfield, Ill.

[Signed] O. F. BERRY, *Chairman.*

BEFORE THE RAILROAD AND WAREHOUSE COMMISSION OF THE STATE OF ILLINOIS.

In the matter of application of the Cleveland, Cincinnati, Chicago & St. Louis Railway Company for approval of plans covering changes in the interlocking plant at Litchfield, Ill.

It appearing to the commission that the Cleveland, Cincinnati, Chicago & St. Louis Railway Company has made application to this commission for approval of plans covering changes connected with the interlocking plant at Litchfield, on account of automatic signals being constructed at that point by the Wabash Railroad Company through this plant, at which point the tracks of the Cleveland, Cincinnati, Chicago & St. Louis Railway Company cross at grade the tracks of the Chicago, Burlington & Quincy Railroad Company, the Wabash Railroad Company and the Illinois Central Railroad Company; and the plans having been examined and approved by F. G. Ewald, consulting engineer of said commission, and the commission being fully advised in the premises;

It is therefore ordered, adjudged and decreed that the said changes in said interlocking plant be, and the same are hereby authorized; and when said changes are completed, said petitioner shall report the same to this commission for its approval.

By order of the commission, this 16th day of October, 1912, dated at Springfield, Ill.

[Signed] O. F. BERRY, *Chairman.*

BEFORE THE RAILROAD AND WAREHOUSE COMMISSION OF THE STATE OF ILLINOIS.

In the matter of application of the Chicago & Eastern Illinois Railroad Company for approval of plans covering changes and additions to the interlocking plant at Findlay Junction, Ill.

It appearing to the commission that the Chicago & Eastern Illinois Railroad Company has made application to this commission for approval of plans covering changes and additions to the interlocking plant at Findlay Junction, Ill., at which point the main tracks of the Chicago & Eastern

Illinois Railroad Company form junctions with each other; and the plans having been examined and approved by the consulting engineer of this commission, and the commission being fully advised in the premises;

It is therefore ordered, adjudged and decreed that the said changes and additions to said interlocking plant be, and the same are hereby authorized; and when said changes and additions are completed, said petitioner shall report the same to this commission for its approval.

By order of the commission, this 26th day of October, 1912, dated at Springfield, Ill.

[Signed] O. F. BERRY, *Chairman*.

BEFORE THE RAILROAD AND WAREHOUSE COMMISSION OF THE STATE OF ILLINOIS.

In the matter of the application of the Chicago & Alton Railroad Company for approval of plans covering the reconstruction of the interlocking plant at Sherman, Ill.

It appearing to the commission that the Chicago & Alton Railroad Company has made application to this commission for approval of plans covering the reconstruction of the interlocking plant at Sherman, Ill., at which point the main tracks of the Chicago & Alton Railroad Company cross each other at grade and form a junction; and the plans having been examined and approved by F. G. Ewald, consulting engineer of this commission, and the commission being fully advised in the premises;

It is therefore ordered, adjudged and decreed that the Chicago & Alton Railroad Company be, and the same is hereby authorized to reconstruct according to said plans, said interlocking plant; and when same is completed, said petitioner shall report the same to this commission for its approval.

By order of the commission this 26th day of October, 1912, dated at Springfield, Ill.

[Signed] O. F. BERRY, *Chairman*.

BEFORE THE RAILROAD AND WAREHOUSE COMMISSION OF THE STATE OF ILLINOIS.

In the matter of the application of the Chicago & Alton Railroad Company for approval of plans covering the rehabilitation of the interlocking plant at Ridgely, Ill.

It appearing to the commission that the Chicago & Alton Railroad Company has made application to this commission for approval of plans covering the rehabilitation of the interlocking plant at Ridgely, Ill., at which point the main track of the Chicago, Peoria & St. Louis Railway Company crosses the main tracks of the Chicago & Alton Railroad Company at grade; and the plans having been examined and approved by F. G. Ewald, consulting engineer of said commission, and the commission being fully advised in the premises;

It is therefore ordered, adjudged and decreed that the rehabilitation of said interlocking plant according to said plans, be and the same is hereby authorized; and when same is completed, said petitioner shall report the same to this commission for its approval.

By order of the commission this 26th day of October, 1912, dated at Springfield, Ill.

[Signed] O. F. BERRY, *Chairman*.

BEFORE THE RAILROAD AND WAREHOUSE COMMISSION OF THE STATE OF ILLINOIS.

In the matter of the application of the Chicago & Alton Railroad Company for approval of plans covering the reconstruction of the interlocking plant at Godfrey, Ill.

It appearing to the commission that the Chicago & Alton Railroad Company has made application to this commission for approval of plans covering the reconstruction of the interlocking plant at Godfrey, Ill., at which point the main tracks of the Chicago & Alton Railroad Company form a junction with each other; and the plans having been examined and approved by F. G. Ewald, consulting engineer of this commission, and the commission being fully advised in the premises;

It is therefore ordered, adjudged and decreed that the said Chicago & Alton Railroad Company be, and the same is hereby authorized to reconstruct interlocking plant according to said plans; and when same is completed, said petitioner shall report the same to this commission for its approval.

By order of the commission this 26th day of October, 1912, dated at Springfield, Ill.

[Signed] O. F. BERRY, *Chairman.*

BEFORE THE RAILROAD AND WAREHOUSE COMMISSION OF THE STATE OF ILLINOIS.

In the matter of application of the Pennsylvania Company for approval of plans covering interlocking at Calumet Park, Ill.

It appearing to the commission that the Pennsylvania Company has made application to this commission for approval of plans covering the construction of power distant signals to be located along the tracks of the South Chicago & Southern Railroad Company, which is operated by the Pennsylvania Company, at Calumet Park, Ill., at which point the tracks of the South Chicago & Southern Railroad Company cross at grade the tracks of the Michigan Central Railroad Company, the Baltimore & Ohio Chicago Terminal Railroad Company and the Indiana Harbor Belt Railroad Company; and the plans having been examined and approved by F. G. Ewald, consulting engineer of the commission, and the commission being fully advised in the premises;

It is therefore ordered, adjudged and decreed by the commission that the construction of said power distant signals in accordance with said plans, be and the same is hereby authorized; and when such signals are completed, the said petitioner shall report the same to this commission for its approval.

By order of the commission this 26th day of October, 1912, dated at Springfield, Ill.

[Signed] O. F. BERRY, *Chairman.*

BEFORE THE RAILROAD AND WAREHOUSE COMMISSION OF THE STATE OF ILLINOIS.

In the matter of application of the Chicago & Northwestern Railway Company for approval of plans covering changes and additions to the interlocking plant at Division street, Chicago, Ill.

It appearing to the commission that the Chicago & Northwestern Railway Company has made application to this commission for approval of plans covering changes and additions to the interlocking plant at Division street, Chicago, Ill., which plant is designated to protect traffic passing through connections and junctions formed by the tracks of the Chicago & Northwestern Railway Company; and the plans having been examined and approved by F. G. Ewald, consulting engineer of said commission, and the commission being fully advised in the premises;

It is therefore ordered, adjudged and decreed that said changes and additions to said interlocking plant be, and the same are hereby authorized; and when said changes and additions are completed, said petitioner shall report the same to this commission for its approval.

By order of the commission this 6th day of November, 1912, dated at Springfield, Ill.

[Signed] O. F. BERRY, *Chairman.*

BEFORE THE RAILROAD AND WAREHOUSE COMMISSION OF THE STATE OF ILLINOIS.

In the matter of application of the Chicago Great Western Railroad Company for approval of plans covering changes and additions to the interlocking plant at Bellewood, Ill.

It appearing to the commission that the Chicago Great Western Railroad Company has made application to this commission for approval of plans covering changes and additions to the interlocking plant at Bellewood, Ill., at which point the tracks of the Indiana Harbor Belt Railroad Company cross the tracks of the Aurora, Elgin and Chicago Railroad and the Chicago Great Western Railroad Company; and the plans having been examined and approved by F. G. Ewald, consulting engineer of said commission, and the commission being fully advised in the premises;

It is therefore ordered, adjudged and decreed that the changes and additions to said interlocking plant be, and the same are hereby authorized; and when said changes and additions are completed, said petitioner shall report the same to this commission for its approval.

By order of the commission this 6th day of November, 1912, dated at Springfield, Ill.

[Signed] O. F. BERRY, *Chairman.*

BEFORE THE RAILROAD AND WAREHOUSE COMMISSION OF THE STATE OF ILLINOIS.

In the matter of application of the Chicago & Northwestern Railway Company for approval of plans covering additions to the interlocking plant at Melrose Park, Ill.

It appearing to the commission that the Chicago & Northwestern Railway Company has made application to this commission for approval of plans covering additions to the interlocking plant at Melrose, Ill., at which point a junction is formed by the tracks of the Chicago & Northwestern Railway Company; and the plans having been examined and approved by F. G. Ewald, consulting engineer of said commission, and the commission being fully advised in the premises;

It is therefore ordered, adjudged and decreed that the said additions to said interlocking plant be, and the same are hereby authorized; and when said additions are completed, said petitioner shall report the same to this commission for its approval.

By order of the commission this 6th day of November, 1912, dated at Springfield, Ill.

[Signed] O. F. BERRY, *Chairman.*

BEFORE THE RAILROAD AND WAREHOUSE COMMISSION OF THE STATE OF ILLINOIS.

In the matter of application of the Chicago & Northwestern Railway Company for approval of plans covering changes and additions to the interlocking plant at Carpenter street, Chicago. Ill.

It appearing to the commission that the Chicago & Northwestern Railway Company has made application to this commission for approval of plans

covering changes and additions to the interlocking plant at Carpenter street, Chicago, Ill., which plant is designed to protect traffic passing through connections and junctions formed by the tracks of the Chicago & Northwestern Railway Company; and the plans having been examined and approved by F. G. Ewald, consulting engineer of said commission, and the commission being fully advised in the premises;

It is therefore ordered, adjudged and decreed that the said changes and additions to said interlocking plant be, and the same are hereby authorized; and when said changes and additions to said interlocking plant are completed, said petitioner shall report the same to this commission for its approval.

By order of the commission this 6th day of November, 1912, dated at Springfield, Ill.

[Signed] O. F. BERRY, *Chairman.*

BEFORE THE RAILROAD AND WAREHOUSE COMMISSION OF THE STATE OF ILLINOIS.

In the matter of application of the Chicago & Western Indiana Railroad Company for approval of revised plans showing changes and additions to the interlocking plant known as tower "A," at 15th and Dearborn streets, Chicago, Ill.

It appearing to the commission that the Chicago & Western Indiana Railroad Company has made application to this commission for approval of revised plans covering changes and additions to the interlocking plant known as tower "A" at 15th and Dearborn streets, Chicago, Ill., at which point connections and junctions are formed by the tracks of the Chicago & Western Indiana Railroad Company, the Atchison, Topeka & Santa Fe Railway Company, the Chicago & Eastern Illinois Railroad Company and the Chicago, Indianapolis & Louisville Railway Company; and the plans having been examined and approved by F. G. Ewald, consulting engineer of said commission, and the commission being fully advised in the premises;

It is therefore ordered, adjudged and decreed that the said changes and additions to said interlocking plant be, and the same are hereby authorized; and when said changes and additions are completed, said petitioner shall report the same to this commission for its approval.

By order of the commission this 6th day of November, 1912, dated at Springfield, Ill.

[Signed] O. F. BERRY, *Chairman.*

BEFORE THE RAILROAD AND WAREHOUSE COMMISSION OF THE STATE OF ILLINOIS.

In the matter of application of the Illinois Central Railroad Company for approval of plans covering changes in the interlocking plant at North Litchfield, Ill.

It appearing to the commission that the Illinois Central Railroad Company has made application to this commission for approval of plans covering certain changes in the interlocking plant at North Litchfield, Ill., made necessary to accommodate the newly constructed double tracks of the Wabash Railroad Company, at which point the main track of the Illinois Central Railroad Company crosses the tracks of the Wabash Railroad Company; and the plans having been examined and approved by F. G. Ewald, consulting engineer of said commission, except as to the location of the back-up derails in tracks of the Wabash Railroad Company; with the understanding that these derails be located not less than two hundred feet from the fouling points, and the commission being fully advised in the premises;

It is therefore ordered, adjudged and decreed that the said changes in said interlocking plant be, and the same is hereby authorized; and when said changes are completed, said petitioner shall report the same to this commission for its approval.

By order of the commission this 6th day of November, 1912, dated at Springfield, Ill.

[Signed] O. F. BERRY, *Chairman.*

BEFORE THE RAILROAD AND WAREHOUSE COMMISSION OF THE STATE OF ILLINOIS.

In the matter of the application of the St. Louis, Iron Mountain & Southern Railway Company for approval of plans covering additions to the interlocking plant at Raddle, Ill.

It appearing to the commission that the St. Louis, Iron Mountain & Southern Railway Company has made application to this commission for approval of plans covering additions to the interlocking plant at Raddle, Ill., at which point the main tracks of the St. Louis, Iron Mountain & Southern Railway Company form a junction with each other; and the plans having been examined and approved by F. G. Ewald, consulting engineer of said commission, and the commission being fully advised in the premises;

It is therefore ordered, adjudged and decreed that the said additions to said interlocking plant be, and the same are hereby authorized; and when said changes are completed, said petitioner shall report the same to this commission for its approval.

By order of the commission this 6th day of November, 1912, dated at Springfield, Ill.

[Signed] O. F. BERRY, *Chairman.*

BEFORE THE RAILROAD AND WAREHOUSE COMMISSION OF THE STATE OF ILLINOIS.

In the matter of application of the St. Louis, Peoria & Northwestern Railway Company for approval of plans covering changes and additions to the interlocking plant at Curran, Ill.

It appearing to the commission that the St. Louis, Peoria & Northwestern Railway Company has made application to this commission for approval of plans covering changes and additions to the interlocking plant at Curran, Ill., at which point the main tracks of the Wabash Railroad Company cross the main track of the Chicago, Peoria & St. Louis Railway Company of Illinois; and it appearing that these changes and additions are made necessary by the fact that the main track of the St. Louis, Peoria & Northwestern Railway Company crosses over the tracks of the above mentioned companies in such a way as to necessitate the moving of the signals and accompanying units, so that they will not be hidden by the overhead structure of the St. Louis, Peoria & Northwestern Railway Company; and the plans having been examined and approved by F. G. Ewald, consulting engineer of said commission, and the commission being fully advised in the premises;

It is therefore ordered, adjudged and decreed that the said changes and additions to said interlocking plant be, and the same are hereby authorized; and when said changes and additions are completed, the petitioner shall report the same to this commission for its approval.

By order of the commission this 12th day of November, 1912, dated at Springfield, Ill.

[Signed] O. F. BERRY, *Chairman.*

BEFORE THE RAILROAD AND WAREHOUSE COMMISSION OF THE STATE OF ILLINOIS.

In the matter of application of the Illinois Central Railroad Company for approval of plans covering certain changes in the interlocking plant-at Kinmundy, Ill.

It appearing to the commission that the Illinois Central Railroad Company has made application to this commission for approval of plans covering certain changes in the interlocking plant at Kinmundy, Ill., at which point the main track of the Chicago & Eastern Illinois Railroad Company crosses at grade the main tracks of the Illinois Central Railroad Company; and the plans having been examined and approved by F. G. Ewald, consulting engineer of said commission, and the commission being fully advised in the premises;

It is therefore ordered, adjudged and decreed by the commission that the said changes to said interlocking plant be, and the same are hereby authorized; and when said changes are completed, said petitioner shall report the same to this commission for its approval.

By order of the commission, this 20th day of November, 1912, dated at Springfield, Ill.

[Signed] O. F. BERRY, *Chairman.*

BEFORE THE RAILROAD AND WAREHOUSE COMMISSION OF THE STATE OF ILLINOIS.

In the matter of application of the Illinois Central Railroad Company for approval of plans covering changes in the interlocking plant at Edgewood, Ill.

It appearing to the commission that the Illinois Central Railroad Company has made application to this commission for approval of plans covering certain changes to the interlocking plant at Edgewood, Ill., at which point the main tracks of the Illinois Central Railroad Company are crossed by a main track of the Baltimore & Ohio Southwestern Railroad Company; and the plans having been examined and approved by F. G. Ewald, consulting engineer of said commission, and the commission being fully advised in the premises;

It is therefore ordered, adjudged and decreed that the said changes in said interlocking plant be, and the same are hereby authorized; and when said changes are completed, said petitioner shall report the same to this commission for its approval.

By order of the commission this 20th day of November, 1912, dated at Springfield, Ill.

[Signed] O. F. BERRY, *Chairman.*

BEFORE THE RAILROAD AND WAREHOUSE COMMISSION OF THE STATE OF ILLINOIS.

In the matter of the application of the Illinois Central Railroad Company for approval of plans covering changes in the interlocking plant at Odin, Ill.

It appearing to the commission that the Illinois Central Railroad Company has made application to this commission for approval of plans covering certain changes in the interlocking plant at Odin, Ill., at which point the main track of the Baltimore & Ohio Southwestern Railroad Company crosses at grade the main tracks of the Illinois Central Railroad Company; and the plans having been examined and approved by F. G. Ewald, consulting engineer of said commission, and the commission being fully advised in the premises;

It is therefore ordered, adjudged and decreed that the said changes in said interlocking plant be, and the same are hereby authorized; and when said changes are completed, said petitioner shall report the same to this commission for its approval.

By order of the commission this 20th day of November, 1912, dated at Springfield, Ill.

[Signed] O. F. BERRY, *Chairman*.