

INSURANCE MAPS
OF
CHICAGO
ILLINOIS
VOLUME SIX

PUBLISHED BY THE

SANBORN MAP COMPANY
11 BROADWAY, NEW YORK
SCALE 50 FT TO AN INCH

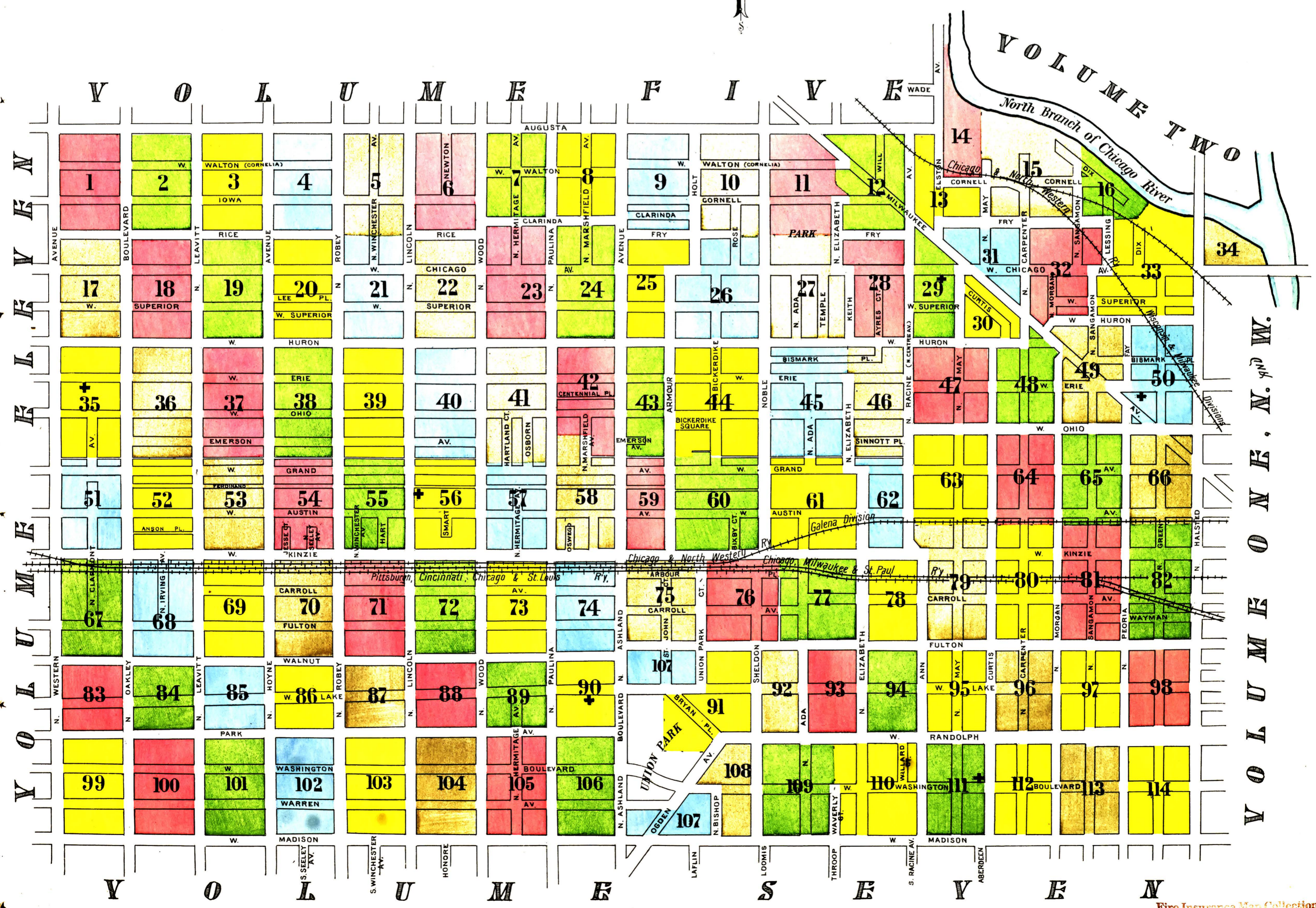
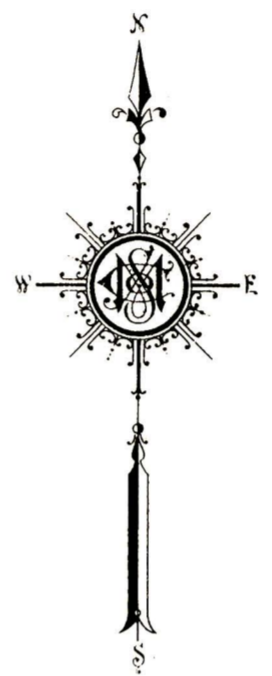
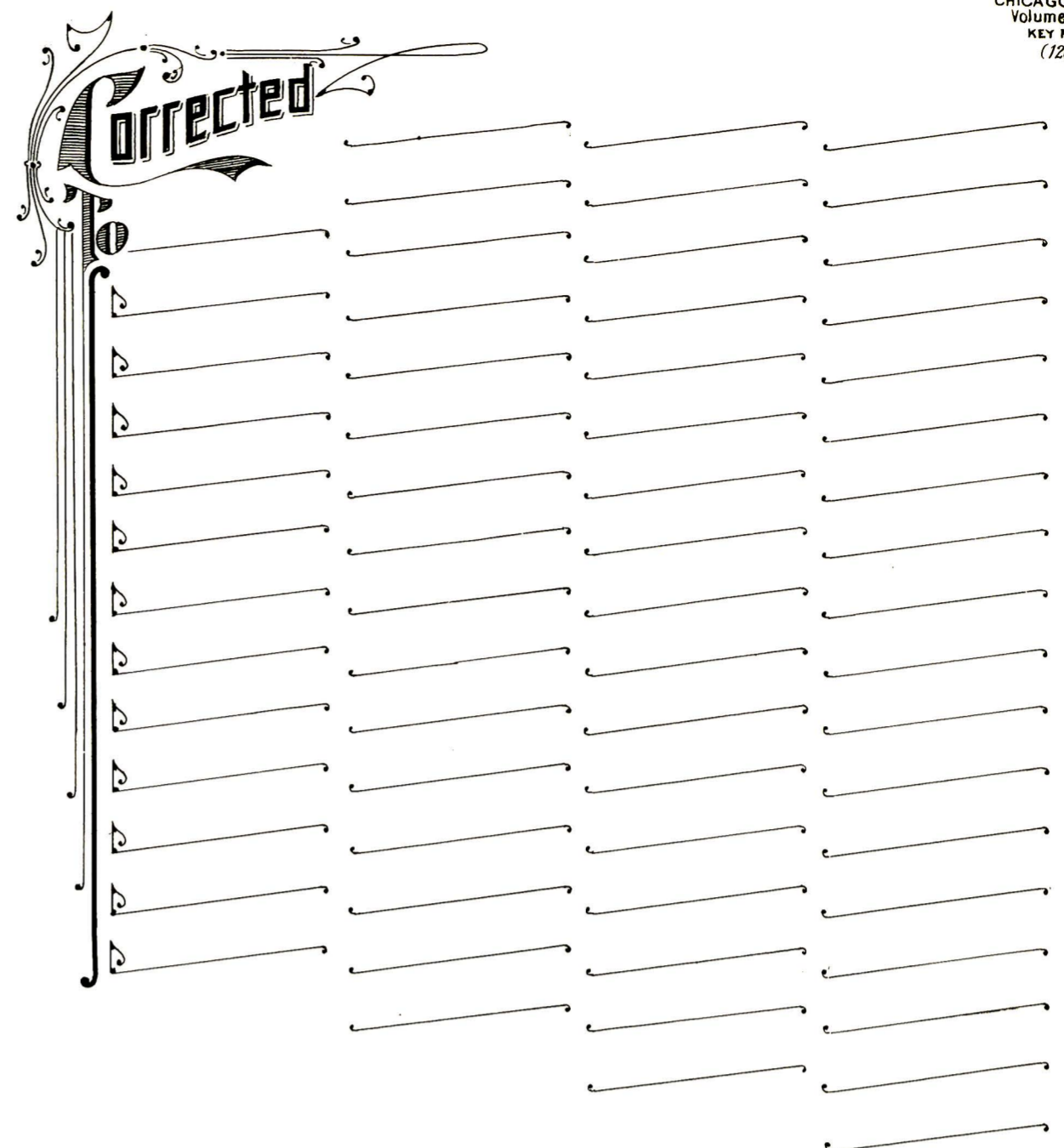
1916
COPYRIGHT 1916, BY THE SANBORN MAP CO.

KEY

	Fire proof construction.
	Hollow concrete or cement block construction.
	Brick building with brick or metal cornice.
	" " " " frame cornice.
	" " " " stone front.
	" " " " frame side.
	Brick veneered building.
	Brick and frame "
	Frame building.
	" " " " iron clad.
	Stone building
	Fire wall 6 inches above roof.
	" " " " 12 " " "
	" " " " 18 " " "
	" " " " 36 " " "
	Figures 8, 12, 16, 20 - indicate thickness of wall in inches.
	Wall without opening, and size in inches.
	" " " " with openings, figures indicate on which floor.
	" " " " double iron or tin clad doors.
	" " " " Wired glass doors.
	" " " " standard vault doors or standard tin clad doors.
	Windows protected by iron shutters.
	" " " " tin clad shutters.
	Window opening in first story
	Windows " " second and third stories.
	" " " " " " fourth "
	Wired glass windows.
	Windows 12 & 24 with iron shutters, 3rd & 4th with tin clad shutters and wired glass on 5th & 6th.

	Haisways
	Elevators.
	Frame enclosed elevator
	" " " " with traps.
	" " " " self closing traps.
	" " " " traps.
	" " " " self closing traps.
	" " " " wired glass door.
	HORIZONTAL Steam boilers.
	VERTICAL " "
	Chimneys.
	Engine and horse power in figures.
	Water pipes, and size in inches.
	SINGLE Hydrants.
	DOUBLE " "
	TRIPLE " "
	Vertical pipe or stand pipe.
	Fire escape.
	Automatic sprinklers.
	Fire alarm box.
	Automatic fire alarm.
	Independent electric plant.
	Force pump.
	Elevation.
	Block number.
	Reference to adjoining sheet.

74





AUGUSTA

WILL

CORNELL

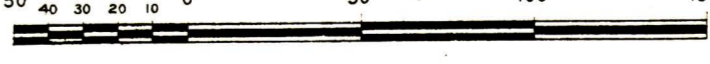
FRY

W. WALTON
(CORNELIA)

MILWAUKEE
AV.

AV. (N. CENTRE)
N. RACINE

Scale of Feet.



13

29

13

CHICAGO VOL. 8
(599)

AUGUSTA

AV. (N. CENTRE AV.)

N. RACINE

AV.

ELSTON

CORNELL

N. MAY

FRY

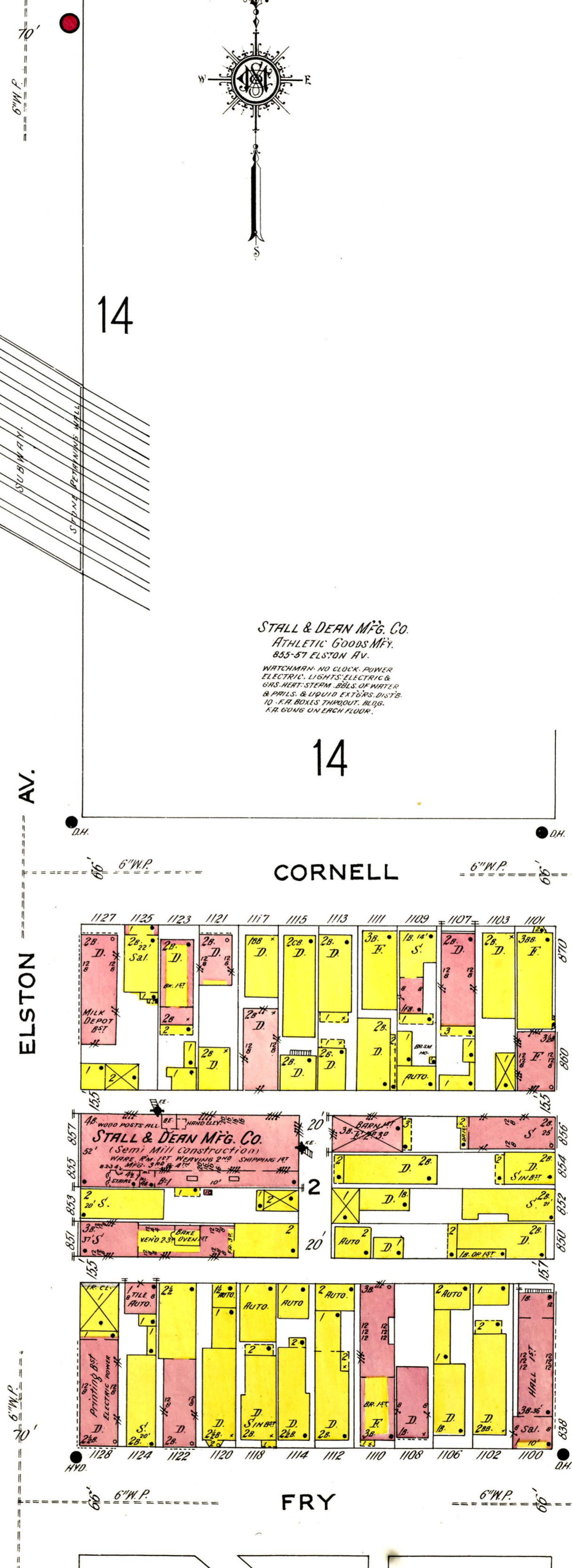
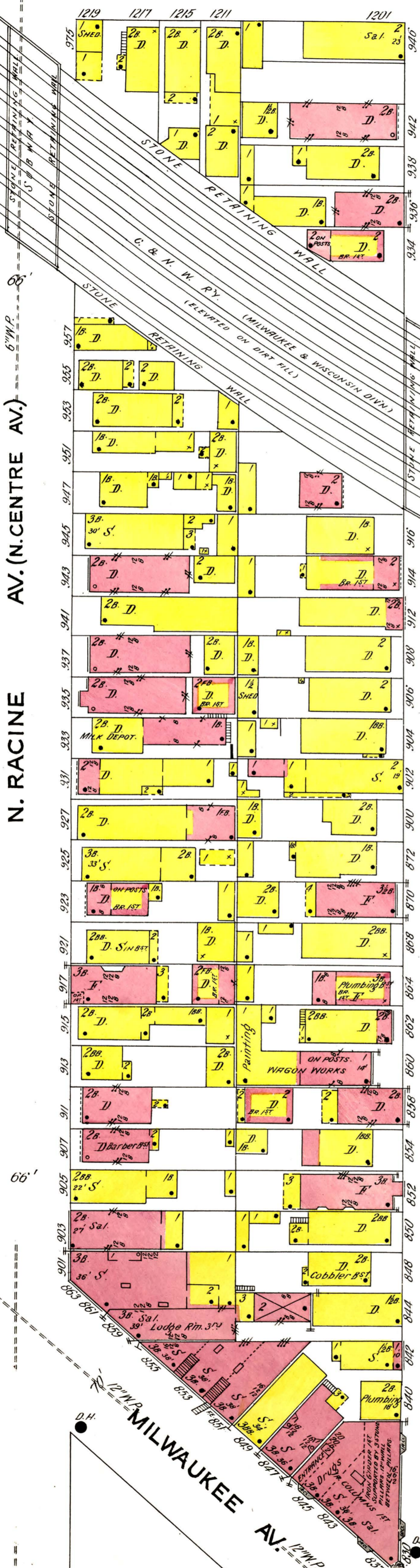
29

14

14

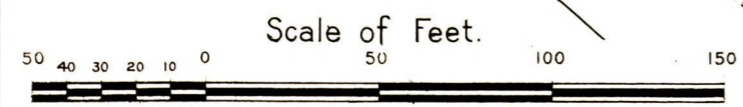
15

31



STALL & DEAN MFG. CO.
ATHLETIC GOODS MFG.
853-57 ELSTON AV.
WATCHMAN - NO CLOCK, PUMPER
ELECTRIC, LIGHTS, ELECTRIC &
GAS, HEAT, STEAM, BILLS OF WATER
& PAINTS, & LIQUID EXTENS. DISTB.
10 PER BOXES THROUGH. 2000.
A.R. GUNG ON EACH FLOOR.

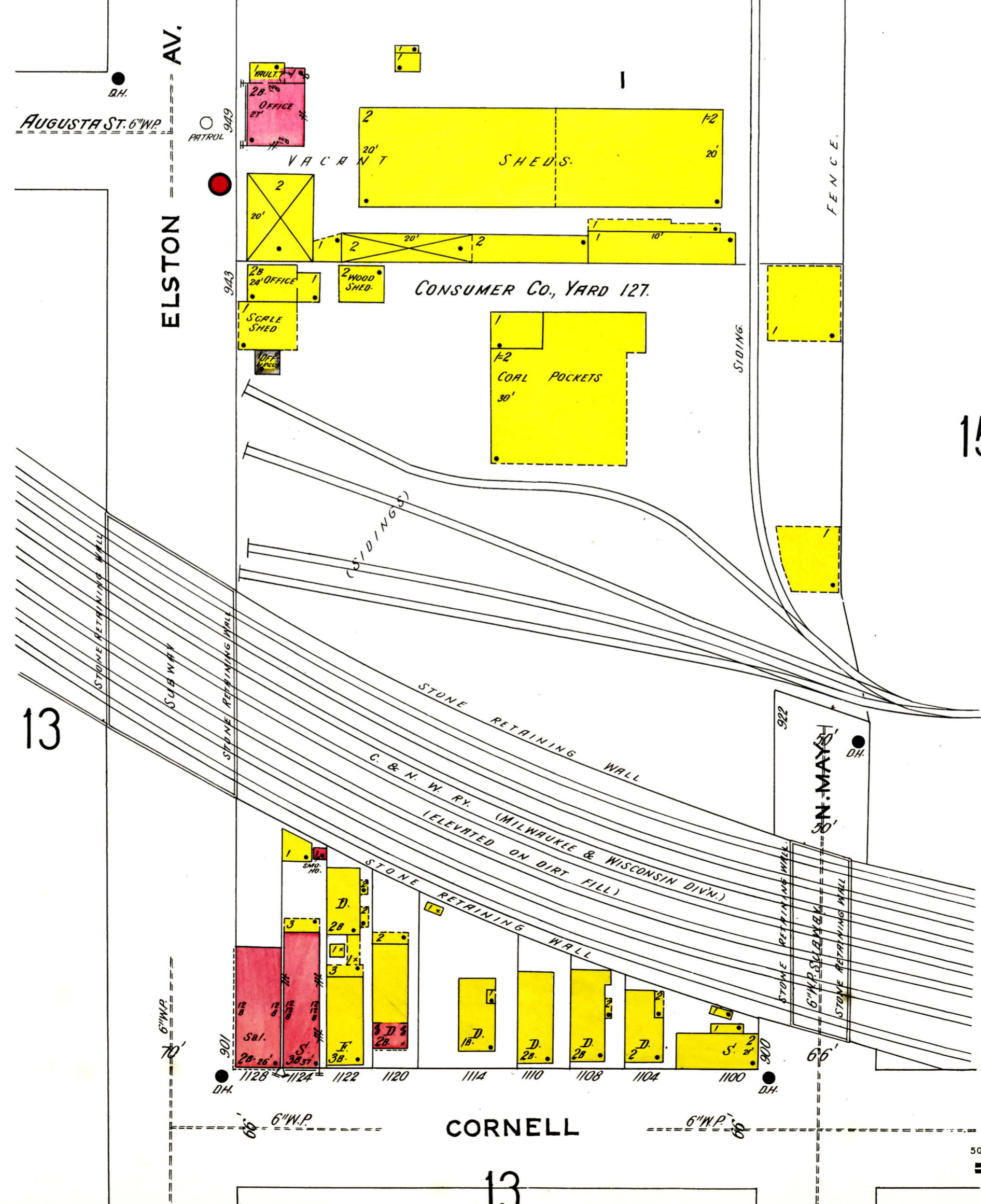
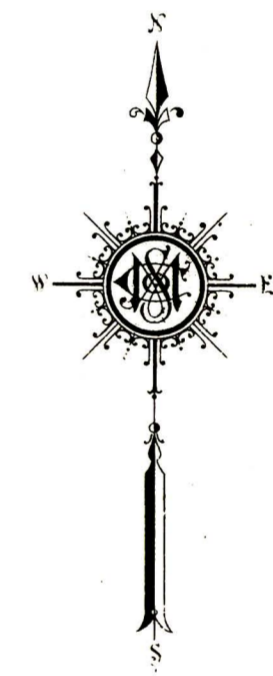
STALL & DEAN MFG. CO.
(Semi Mill Construction)
WARE, RM, 1ST MEASURING RM, SHIPPING RM
853-57 ELSTON AV. 4 1/2' 8 1/2' 8 1/2' 8 1/2'
22' 10' 10' 10' 10' 10' 10' 10' 10' 10'



SEE VOLUME TWO

NORTH BRANCH OF CHICAGO RIVER

SEE VOLUME FIVE

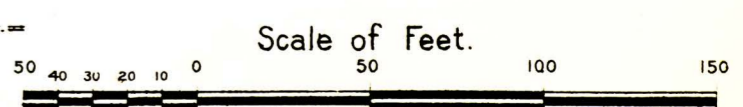


15

13

CORNELL

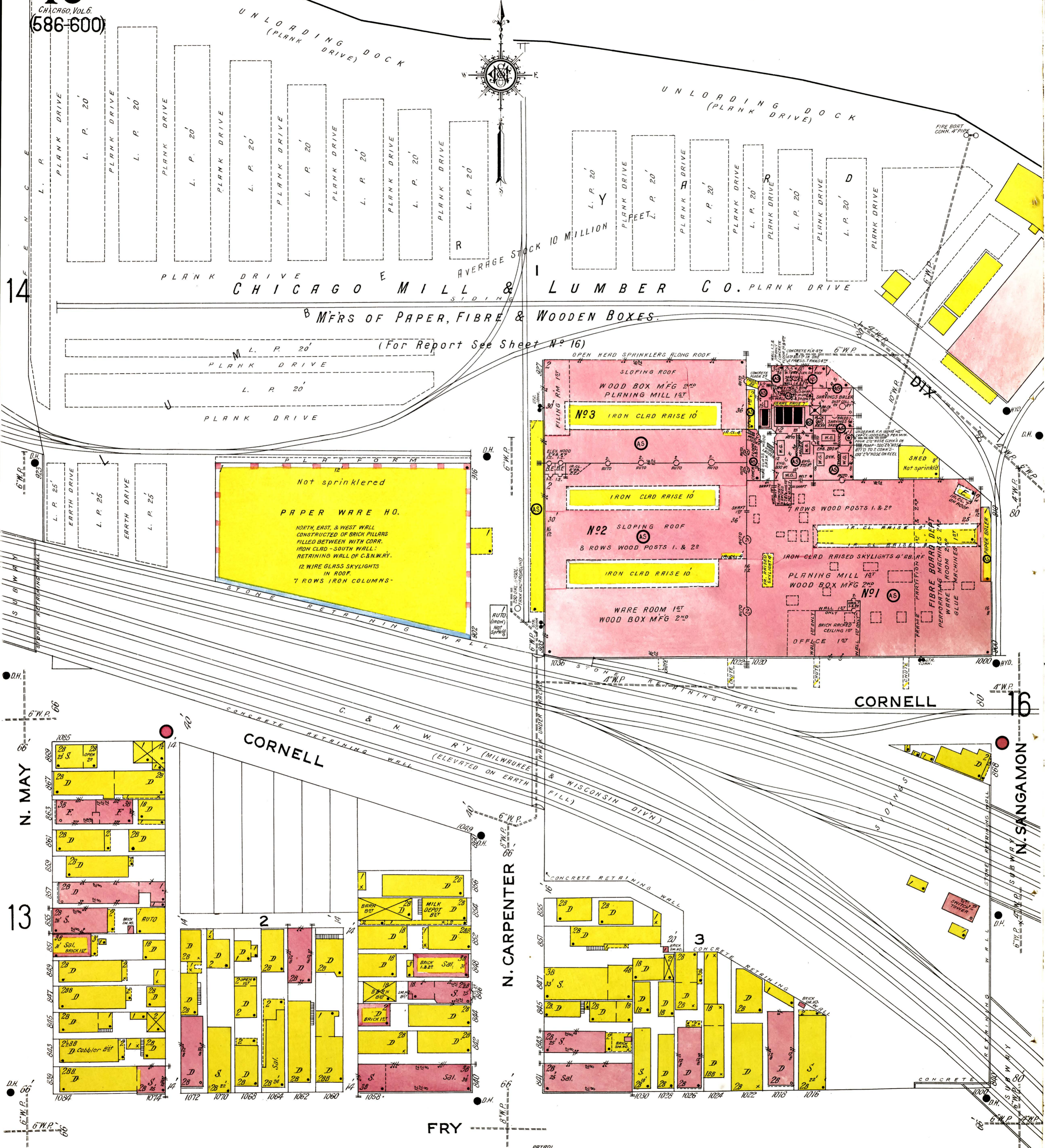
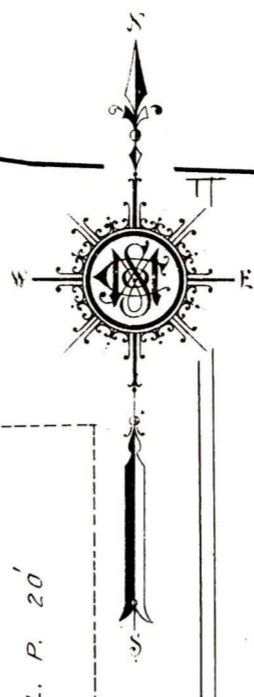
13



Scale of Feet.

NORTH BRANCH OF CHICAGO RIVER

15
CHICAGO, VOL. 6
(586-600)

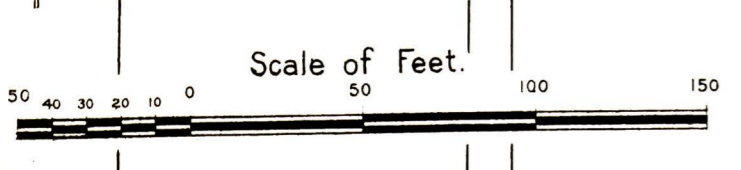


14

13

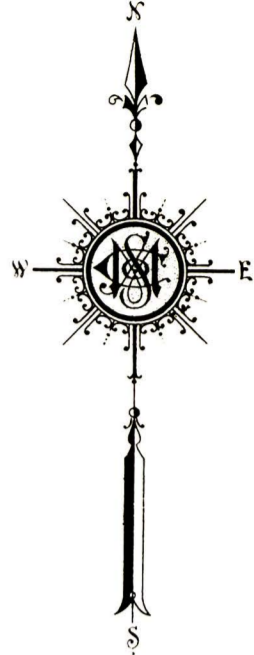
16

N. SANGAMON

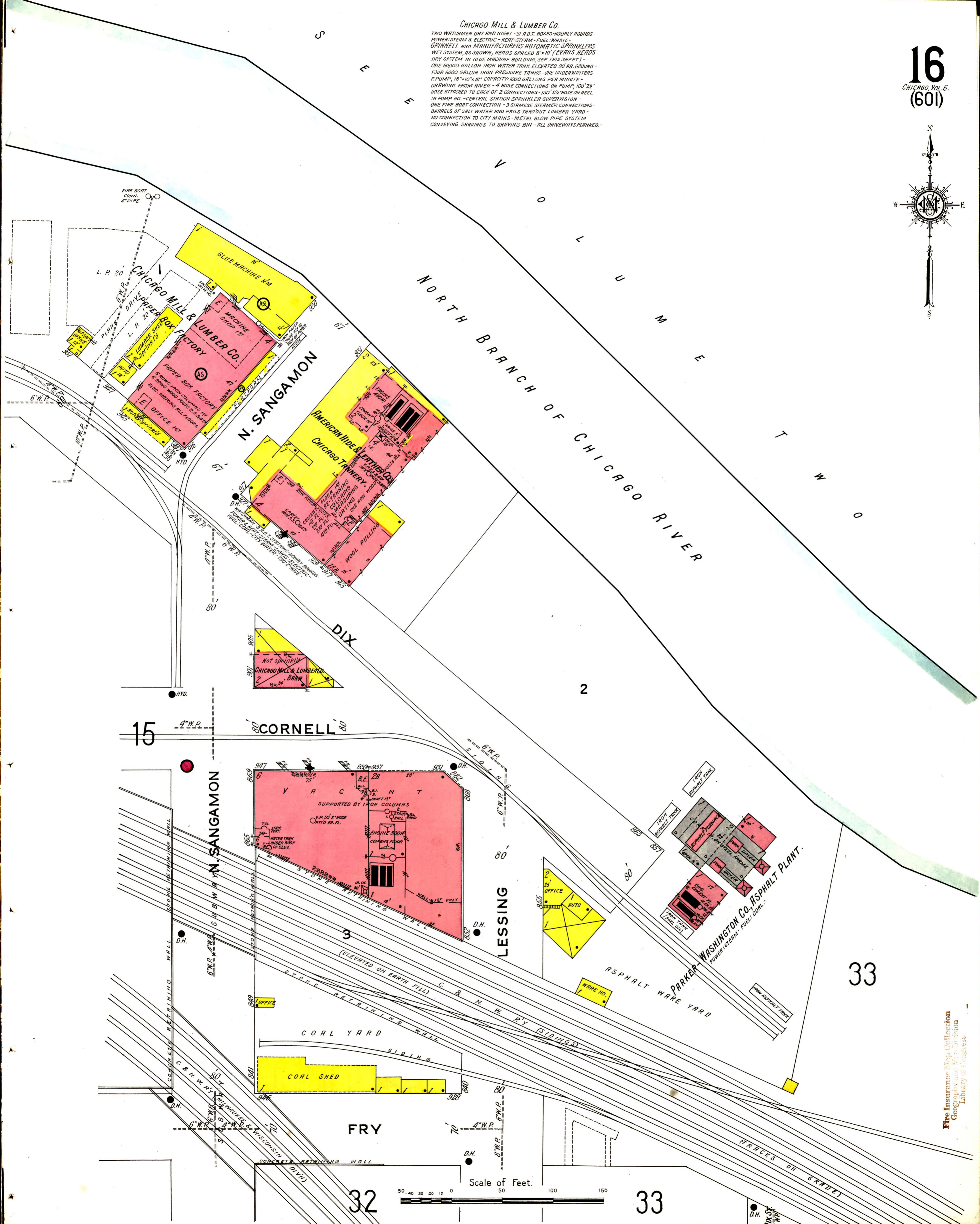


31

32



CHICAGO MILL & LUMBER CO.
TWO WATCHMEN DAY AND NIGHT - 21 R.D.T. BOXES-HOURLY ROUNDS -
POWER-STEAM & ELECTRIC - HEAT-STEAM - FUEL - WASTE -
GRINNELL AND MANUFACTURERS AUTOMATIC SPRINKLERS
WET SYSTEM, AS SHOWN, HEADS SPACED 8'x10' (EVANS HEADS
DRY SYSTEM IN GLUE MACHINE BUILDING, SEE THIS SHEET) -
ONE 6000 GALLON IRON WATER TANK, ELEVATED 30 FT. ABOVE GROUND -
FOUR 6000 GALLON IRON PRESSURE TANKS - ONE UNDERWATERS
PUMP, 18"x10"x12" CAPACITY 1000 GALLONS PER MINUTE -
DRAWING FROM RIVER - 4 HOSE CONNECTIONS ON PUMP, 100' 2 1/2"
HOSE ATTACHED TO EACH OF 2 CONNECTIONS - 150' 2 1/2" HOSE ON REEL
IN PUMP HO. - CENTRAL STATION SPRINKLER SUPERVISION -
ONE FIRE BOAT CONNECTION - 3 SIRMENSE STEAMER CONNECTIONS -
BARRELS OF SALT WATER AND PAILS THROUGH LUMBER YARD -
NO CONNECTION TO CITY MAINS - METAL BLOW PIPE SYSTEM
CONVEYING SHRAVINGS TO SHRAVING BIN - ALL DRIVEWAYS PLANNED.



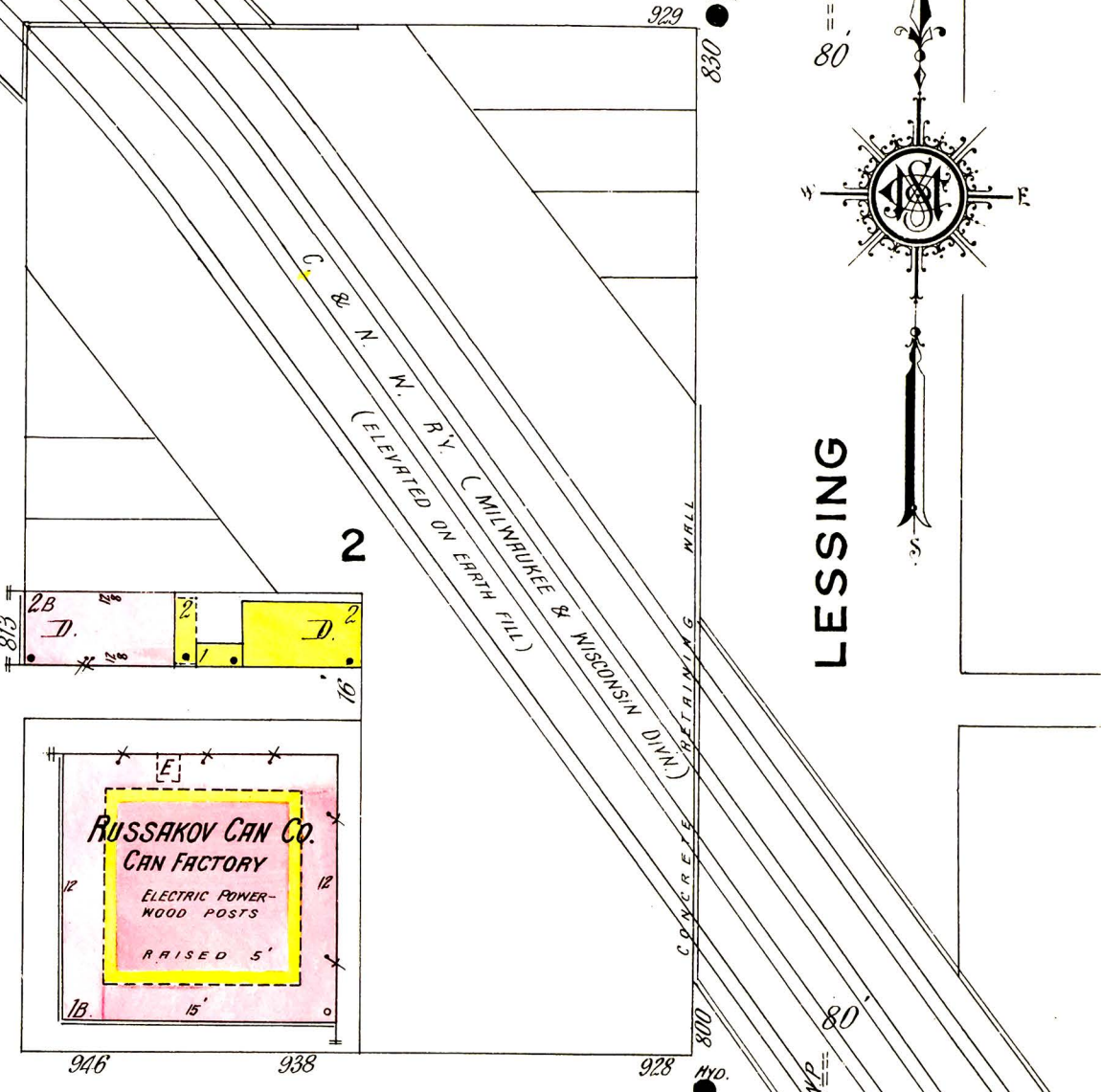
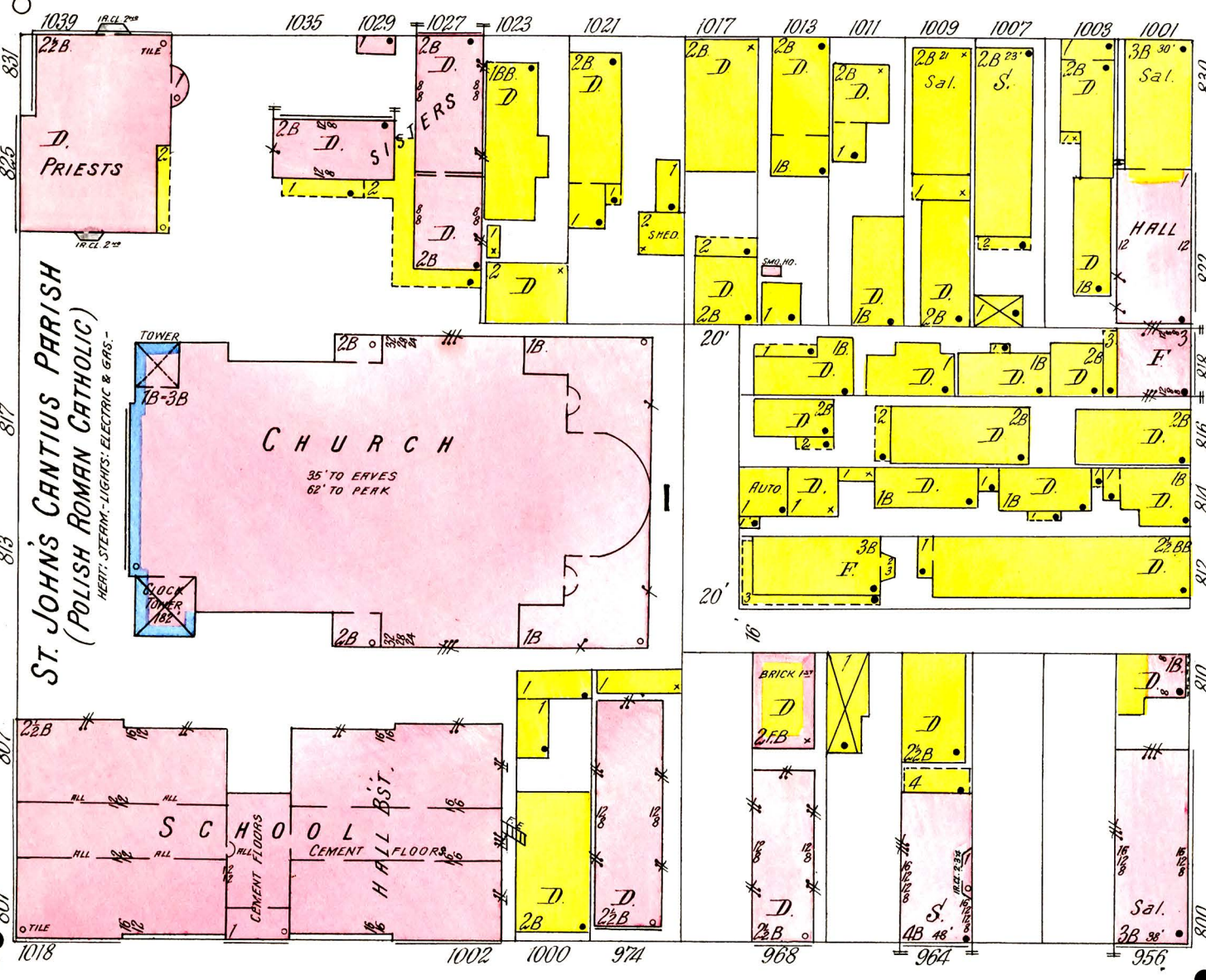
15

16

FRY

N. SANGAMON

LESSING



31

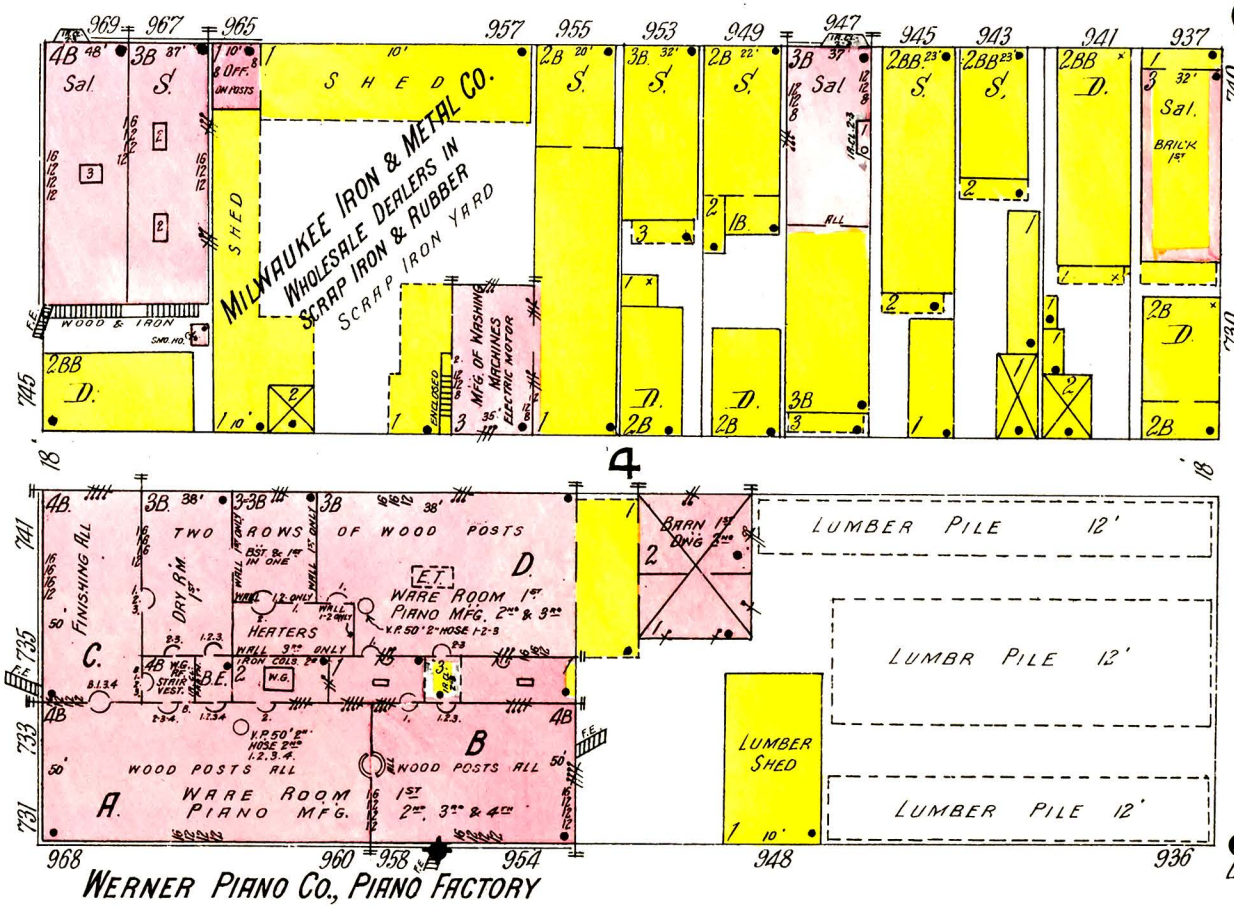
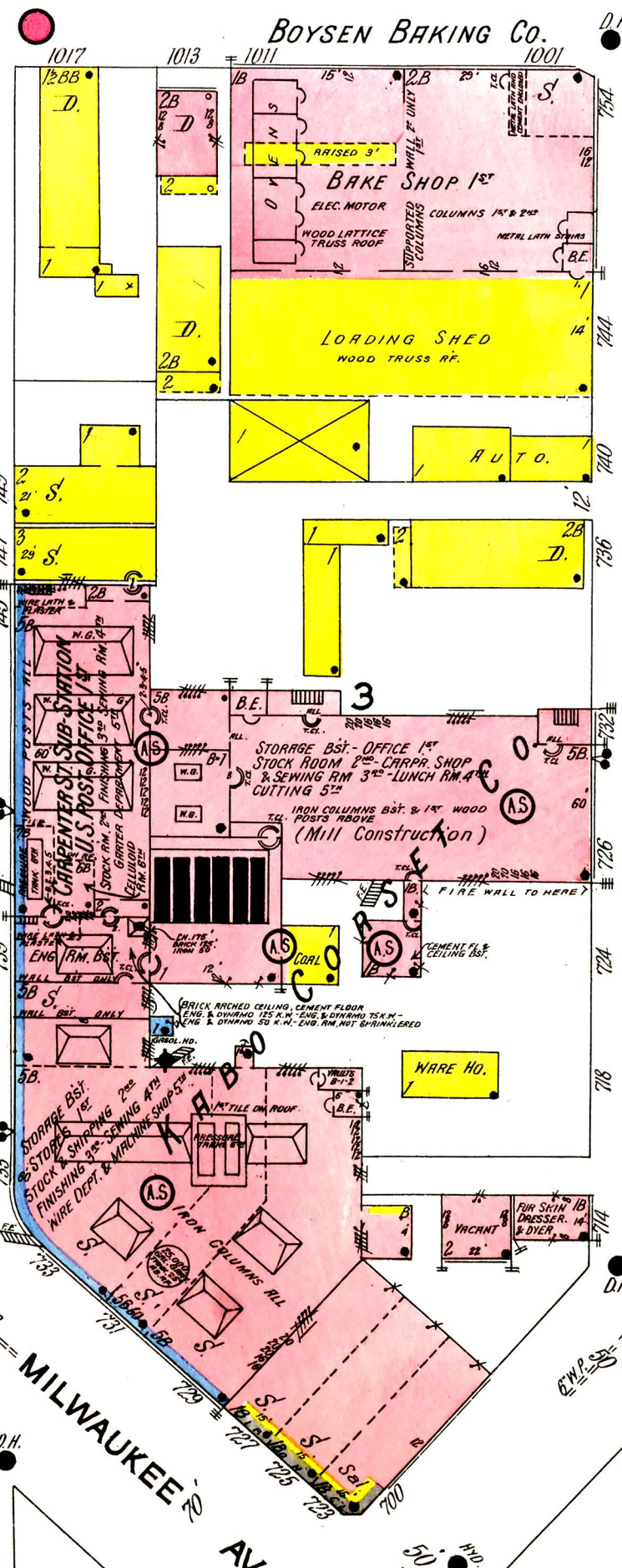
W. CHICAGO AV.

33

N. CARPENTER

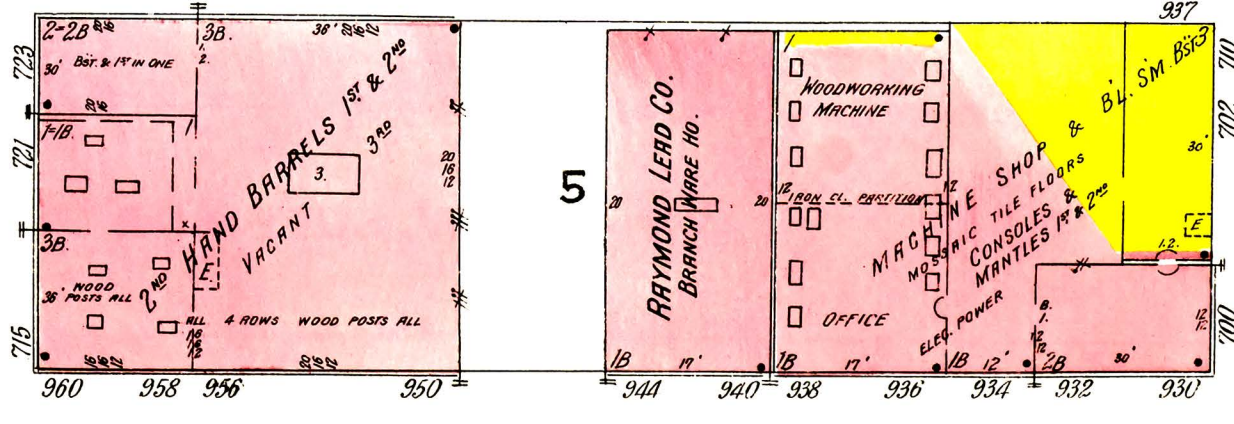
N. MORGAN

N. SANGAMON



W. SUPERIOR

W. HURON



30

MILWAUKEE AV.

49

48

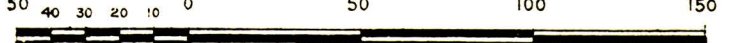
KABO CORSET CO.
718-732 N. MORGAN ST., 723-733 MILWAUKEE AV.
& 733-745 N. CARPENTER ST.

WERNER PIANO CO., PIANO FACTORY
954-968 W. SUPERIOR ST.

WATCHMAN, A. D. T. OFFICE, 16 STATIONS, & NEWMAN CLOCK 10 STATIONS HOURLY ROUNDS. -
FIRE EXTINGUISHERS & HAND PAILS DISTRIBUTED. HEAT, STEAM, LIGHTS & POWER, ELECTRIC,
I. E. P. FUEL, COAL, FLUID, SPRINKLERS THRU OUT, EXCEPT ENG. ROOM, NET SYSTEM,
EXCEPT IN FEM EXPOSED HEADS, ROCKWOOD HEADS IN 723-732 N. MORGAN ST. BALANCE,
INTERNATIONAL HEADS, SPACED 8' X 8' - 2 PRESSURE TANKS, CAPCY. 4500 GALS EACH,
& ONE PRESSURE TANK CAPCY. 8000 GALS. - 25,000 GAL. GRAVITY TANK 25' ABOVE ROOF -
3 SIAMSE STEAMER CONNS. - CENTRAL STATION SPINKLER SUPERVISION, EXCEPT
MORGAN ST. BUILDING.

WATCHMAN, CHICAGO WATCHMAN CLOCK, 22 STATIONS, HOURLY
ROUNDS - HEAT, STEAM - LIGHTS & POWER, ELECTRIC, COMMERCIAL
CURRENT - HEAT, CHL. PIPES & HOSE AS SHOWN - CITY WATER -
BARRELS OF WATER & PAILS DISTRIBUTED.

Scale of Feet.



33
CHICAGO, Vol. 6.
(617-618)

NEWMAN BROS Co.
808 - 824 DIX ST.
WATCHMAN-NEWMAN CLOCK-12 STATIONS - HOURLY ROUNDS - HEAT & POWER - STEAM - LIGHTS - GAS & ELECTRIC - FUEL - COAL & WASTE - MFRS. AUTO SPRINKLERS, SOUTH BLDG. HEADS SPACED 8' X 8' - WET SYSTEM - WATER SUPPLY FROM 12,000 GAL WOOD TANK ELEV'D 25' ABOVE HIGHEST HEAD & 1 PRESSURE TANK CAPCY 4,500 GALS LOCATED ON 4th FLOOR - PRESSURE KEPT AT 80 LBS - SIAMSESE STR. CONN. 1/4" & HOSE AS SHOWN - HILL PUMP 3" X 4" 1/2" JAW W/ING FROM UNDERGRD TANK & CITY WATER - BALLS OF WATER & PAILS THRO-OUT NORTH BLDG - LIQUID EXTERS DISTRIB'D - METAL CONVEYERS TO ALL WOOD MACHINES CONVEYING SHAVINGS TO VAULT ENCLOSED STRIPS

R. J. KITTREDGE & Co.
301-324 W SUPERIOR ST.
WATCHMAN-6 A.D.T. BOXES - HOURLY ROUNDS - 2 NEWMAN CLOCK STAS ONE IN ENG RM - ONE ON 4th FL - CHEM. EXTERS DISTRIB'D - HEAT & POWER - STEAM - LIGHTS - ELECTRIC - FUEL - COAL - BALLS OF WATER & PAILS DISTRIB'D - GRINNELL AUTO SPRINKLERS THRO-OUT - WET SYSTEM - HEADS SPACED 8' X 10' - 2 PRESSURE TANKS CAPCY 6,000 GALS. EACH - 1 WOOD GRAVITY W.T. CAPCY 20,000 GALS. ELEV'D 15' ON ROOF - CITY WATER 2 SIAMSESE STEAMER CONNECTIONS

Devos & Reynolds Co.
MFRS OF PAINT
800-808 W SUPERIOR ST & 807-825 W CHICAGO AV.
2 WATCHMEN, NIGHT, SUNDAYS & HOLIDAYS - 25 A.D.T. STATIONS - HOURLY ROUNDS - HEAT & POWER - STEAM - LIGHTS - ELECTRIC - FUEL - COAL - CITY WATER - V.P.S. & HOSE AS SHOWN - CHEM. EXTERS DISTRIB'D - GRINNELL AUTO SPRINKLERS IN FACTORY NO 1, WET SYSTEM - HEADS SPACED 8' X 10' - WATER SUPPLY FROM 3 PRESSURE TANKS 5,000 GALS. EACH - 1 WOOD GRAVITY TANK ELEV'D 15' ABOVE CAPCY 25,000 GALS. - 2 SIAMSESE STEAMER CONNS - CENTRAL STATION SPRINKLER SUPERVISION - AUTO. FIRE ALARM IN BLDGS 1, 3, & 4

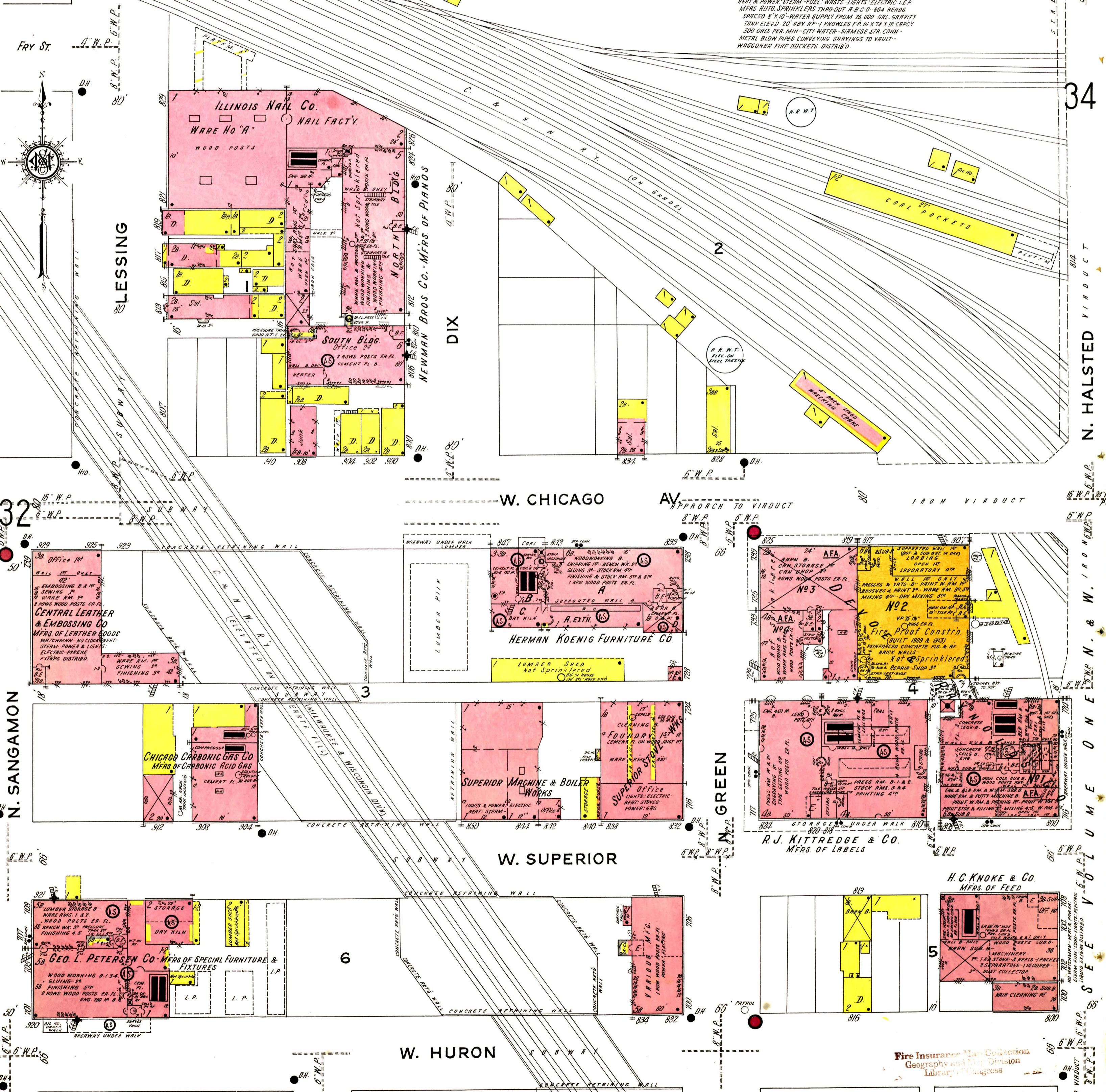
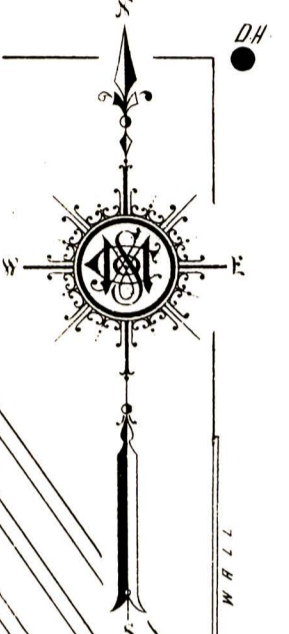
SEE VOLUME TWO
NORTH BRANCH OF CHICAGO RIVER

GEO. L. PETERSEN Co.
701-709 N SANGAMON ST.
WATCHMAN - CLOCK - 13 STATIONS - HOURLY ROUNDS - HEAT & POWER - STEAM - FUEL - COAL & WASTE - LIGHTS - ELECTRIC - I.E.P. MFRS. AUTO SPRINKLERS THRO-OUT - A.B.C.D. 864 HEADS SPACED 8' X 10' - 1 WOOD W.T. ELEV'D 20' ABOVE CAPCY 25,000 GALS. - 1 PRESSURE TANK CAPCY 6,000 GALS. - CITY CONN. - 1 SIAMSESE STEAMER CONN.

HERMAN KOENIG FURNE Co.
833-847 W CHICAGO AV.
WATCHMAN - NEWMAN CLOCK - 15 STATIONS - HOURLY ROUNDS - HEAT & POWER - STEAM - FUEL - WASTE - LIGHTS - ELECTRIC - I.E.P. MFRS. AUTO SPRINKLERS THRO-OUT - A.B.C.D. 864 HEADS SPACED 8' X 10' - WATER SUPPLY FROM 25,000 GAL. GRAVITY TANK ELEV'D - 20' ABOVE - 1 KNOWLES F.P. 14 X 18 CAPCY 500 GALS. PER MIN. - CITY WATER - SIAMSESE STR. CONN. - METAL BLOW PIPES CONVEYING SHAVINGS TO VAULT - WAGGONER FIRE BUCKETS - DISTRIB'D

16

34



32

N. SANGAMON

W. CHICAGO AV

W. SUPERIOR

W. HURON

49

50

Scale of Feet.
50 40 30 20 10 0 50 100 150

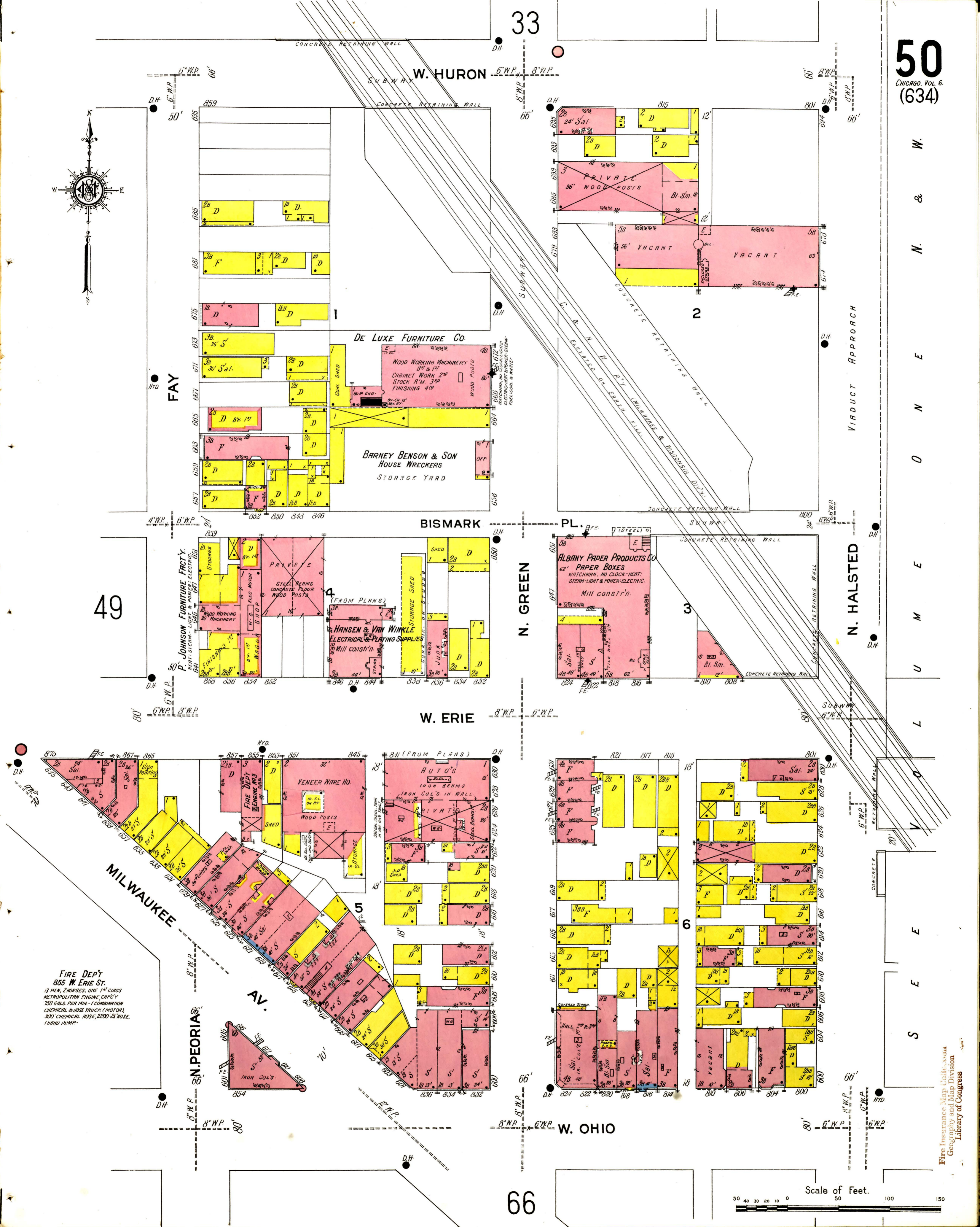
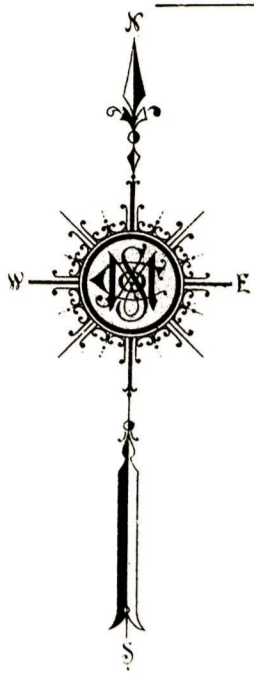
Fire Insurance Map Collection
Geography and Map Division
Library of Congress

BRASCULE BRIDGE
N. HALSTED VIADUCT
W. IROQUOIS
VOLUME ONE

W. & N. E. O. N. E. L. U. M. E. S. E. E.

33

66



49

FIRE DEPT.
855 W. ERIE ST.
13 MEN, 2 HORSES, ONE 1 1/2 CLASS
METROPOLITAN ENGINE, CAP'Y
750 GALS. PER MIN. - 1 COMBINATION
CHEMICAL & ROSE TRUCK (MOTOR),
300' CHEMICAL HOSE, 2200' 2 1/2" HOSE,
1 HAND PUMP.

