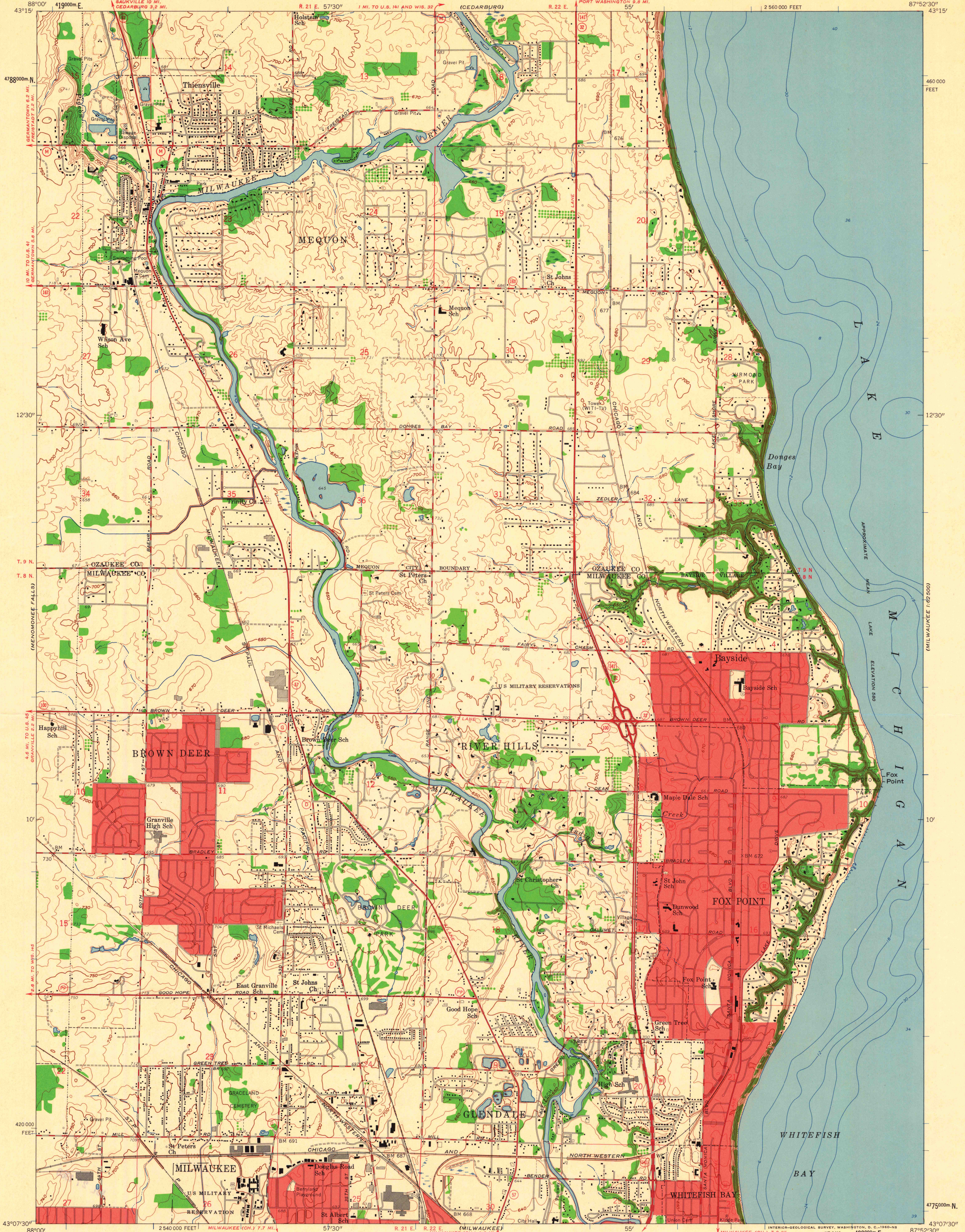
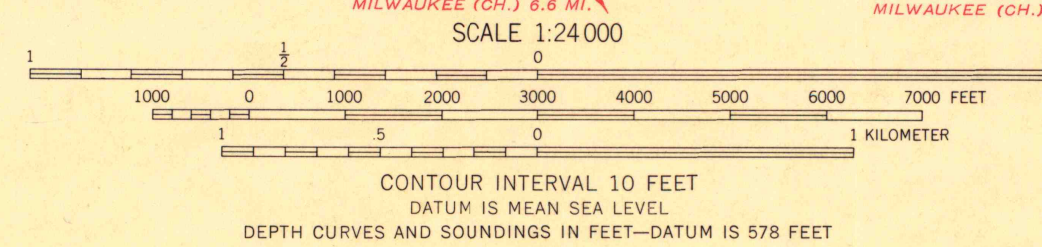


UNITED STATES  
DEPARTMENT OF THE INTERIOR  
GEOLOGICAL SURVEY

THIENSVILLE QUADRANGLE  
WISCONSIN  
7.5 MINUTE SERIES (TOPOGRAPHIC)  
NW 1/4 MILWAUKEE 15' QUADRANGLE



Mapped, edited, and published by the Geological Survey  
Control by USGS, USC&GS, and City of Milwaukee  
Topography from aerial photographs by photogrammetric methods  
Aerial photographs taken 1954-1955. Field check 1958  
Hydrography compiled from U. S. Lake Survey chart 74 (1957)  
Polyconic projection. 1927 North American datum  
10,000-foot grid based on Wisconsin coordinate system, south zone  
1000-meter Universal Transverse Mercator grid ticks,  
zone 16, shown in blue  
Red tint indicates areas in which only  
landmark buildings are shown



ROAD CLASSIFICATION  
Heavy-duty ——— Light-duty ———  
Medium-duty ——— Unimproved dirt ———  
U.S. Route ——— State Route ———



THIENSVILLE, WIS.  
NW 1/4 MILWAUKEE 15' QUADRANGLE  
N 4307.5 - W 8752.5/7.5

THIS MAP COMPLIES WITH NATIONAL MAP ACCURACY STANDARDS  
FOR SALE BY U. S. GEOLOGICAL SURVEY, WASHINGTON 25, D. C.  
AND BY THE WISCONSIN GEOLOGICAL AND NATURAL HISTORY SURVEY, MADISON 6, WISCONSIN  
A FOLDER DESCRIBING TOPOGRAPHIC MAPS AND SYMBOLS IS AVAILABLE ON REQUEST

FOR LIBRARY USE  
ONLY

1958

MAP AND AIR PHOTO LIBRARY  
University of Wisconsin

1958  
Copy  
1-1